

INDEX 12  
MARGIN  
PROOF  
COMPARE

BLACK HAWK COUNTY IOWA:SS 021433  
Filed for record FEB 6, 2002 at  
11:30A.M. and recorded in Book  
of \_\_\_\_\_ Page \_\_\_\_\_

Patricia J. Less

RECORDER

FEE 1-5.00/

WAYNE CLAASSEN ENGINEERING & SURVEYING LTD

SLSI 9-90

# UNITED STATES PUBLIC LAND SURVEY CORNER CERTIFICATE

OF

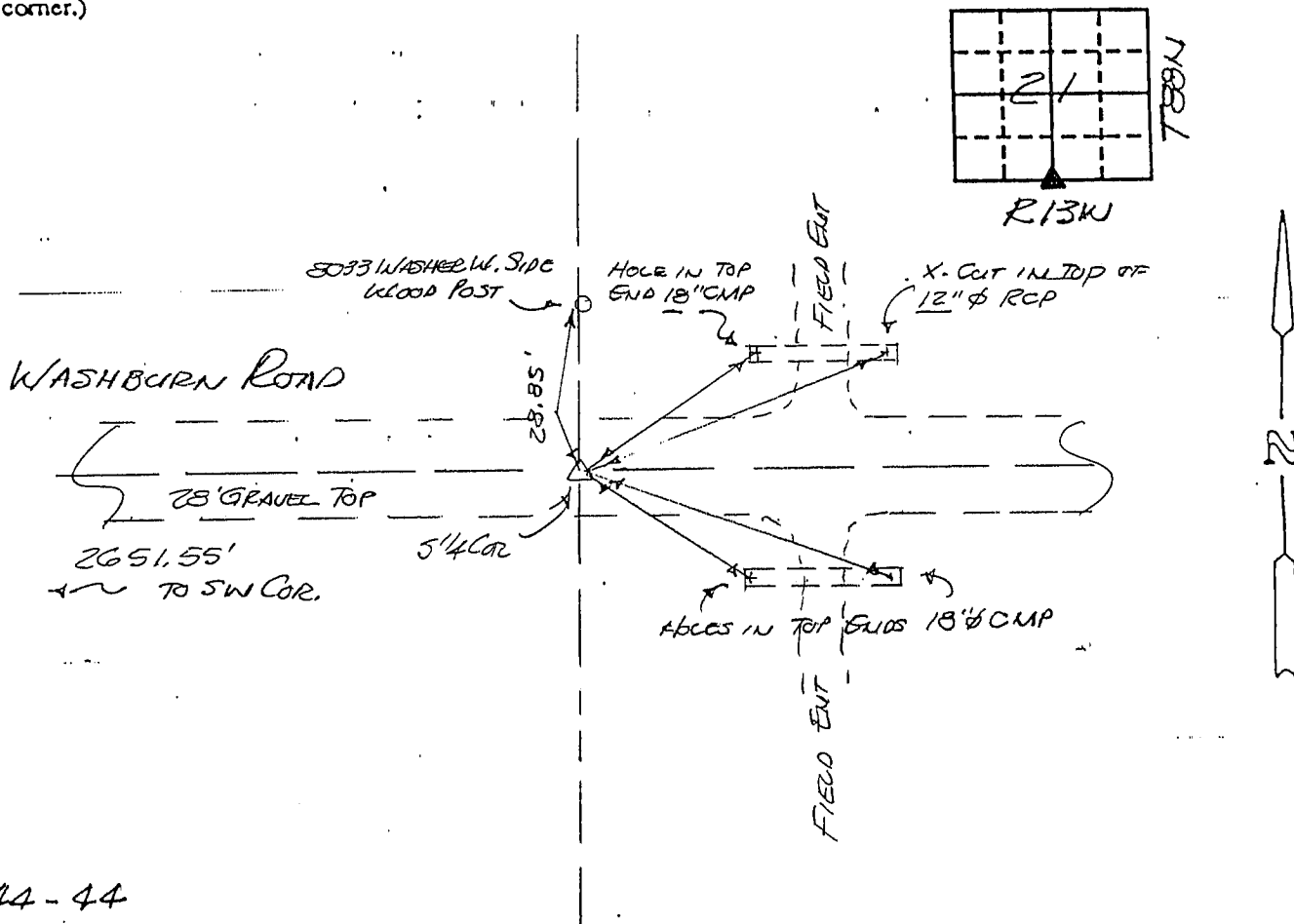
Land Survey Monuments situated in Section 21, Township 33N, Range  
13W, of the Fifth Principal Meridian, BLACK HAWK County, Iowa.  
Previously recorded in N/A in County Recorder's Office.  
(book, page, document number, etc.)

(Show reason for preparing this certificate, the evidence and detailed procedures used in establishing the corner positions and monumentation found or placed.)

Monument Description and Remarks: SET 1/2"  $\phi$  X 24" REBAR  $\phi$  CAP #8033 @ 5'  $\frac{1}{4}$  COR ON  
LINE SW COR - SE COR PER WPA NOTES, AT MID POINT DIST SW-SE. THIS  
LINE MATCHES ROADWAY TOP, DUG 10' X 7' X 3' HOLE WITH ASSISTANCE  
OF B.H. CO. MAINT DEPT BACK L.O.E. FOUND NO EVIDENCE OF MONUMENT OR  
ANY DISTURBED EARTH. NO N-S FENCES AT THIS LOCATION, ONLY RECORD OF  
E-W POSITION WMS WPA WORK 1940.

## PLAN - VIEW

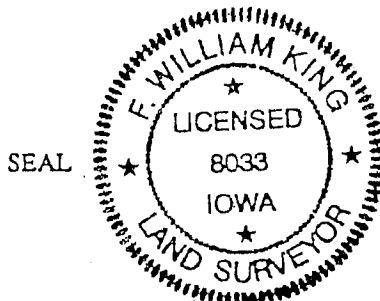
(Show a minimum of three reference ties to durable physical objects, relevant monuments and physical conditions that will enable recovery of the corner.)



I hereby certify that the survey work was completed and this certificate was prepared by me or under my direct personal supervision and that I am a duly registered land surveyor under the laws of the state of Iowa.

Signature: F. William King  
Name typed or printed: F. WILLIAM KING

Date: FEB. 4, 2002 Reg. No. 8033



Corners	List Corners to be Indexed Section	Tw	Range
5' $\frac{1}{4}$	21	33N	13W