

ENV
WAYNE CLAASSEN ENGINEERING AND SURVEYING, INC.
P.O. BOX 898 WATERLOO, IOWA 50704-0898

PHONE: (VOICE) 319-235-6294
(FAX) 319-235-0028

UNITED STATES PUBLIC LAND SURVEY CORNER CERTIFICATE

Land Survey Monuments situated in Section 21, Township 88 North, Range 13 West, of the Fifth Principal Meridian, Black Hawk County County, Iowa.
Previously recorded in Document No. 2007-08543 in County Recorder's Office.
(book, page, document number, etc.)

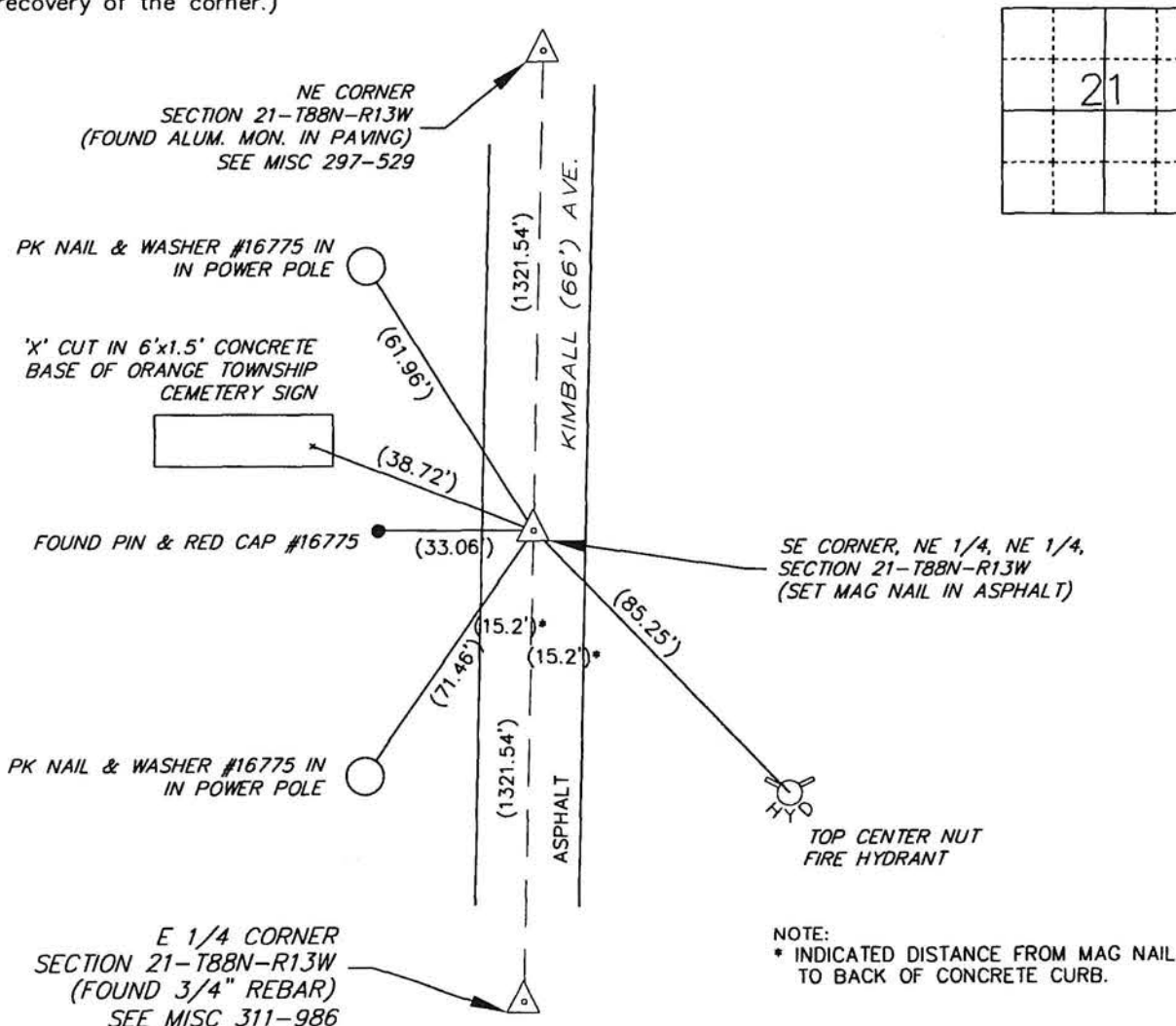
(Show reason for preparing this certificate, the evidence and detailed procedures used in establishing the corner positions and monumentation found or placed.)

Monument Description and Remarks

'X' cut in above reference was covered by asphalt overlay. Set magnail in asphalt using ties form above reference. This certificate is being filed because the monumnet has been replaced.

PLAN - VIEW

(Show a minimum of three reference ties to durable physical objects, relevant monuments and physical conditions that will enable recovery of the corner.)



NOTE:
* INDICATED DISTANCE FROM MAG NAIL
TO BACK OF CONCRETE CURB.

BK 631, PG. 52

I hereby certify that this land surveying document was prepared and the related survey work was performed by me or under my direct personal supervision and that I am a duly Licensed Land Surveyor under the laws of the State of Iowa.

Signature: David L. Scheil
David L. Scheil, L.S.

Date: JUNE 24, 2014 Lic. No. 16775

Pages or Sheets Covered by this Seal: THIS SHEET ONLY.

My license renewal date is December 31, 2006

SEAL

List Corners to be Indexed

Corners	Section	Twp	Range
SE CORNER,	21	88 N	13 W
NE 1/4, NE 1/4,			



WAYNE CLAASSEN ENGINEERING AND SURVEYING, INC.
P. O. BOX 898
WATERLOO, IA

Ph: 319-235-6294

PREPARED BY: David L. Scheil

SURVEYOR'S AFFIDAVIT

STATE OF IOWA }
 } ss
BLACK HAWK COUNTY }

I, David L. Scheil, a Licensed Land Surveyor in the State of Iowa and employed by Wayne Claassen Engineering and Surveying, Inc., do on oath depose and state that I made a United States Public Land Survey Corner Certificate, recorded in Document No. 2014-23138.

I further state that there is an error on the Signature Block where the words "My license renewal Date is December 31, 2006" appears it should read "My license renewal date is December 31, 2014".

Dated this 7 day of July, 2014.



David L. Scheil, RLS
#16775



Notary in and for the State of Iowa



ENV WAYNE CLAASSEN ENGINEERING & SURVEYING INC
PO BOX 898
WATERLOO IA 50704

I VS
P
Z

Document Number: 2007008543
Date: Oct 12, 2006 1:19:01 pm
Aud Fee: 0.00 Rec Fee: 5.00
Trans Tax: 0.00 Rec Management Fee: 1.00
E-Com Fee: 1.00 Non-Standard Page Fee: 0.00
Filed for record in Black Hawk County, Iowa
Patricia S. Sass, County Recorder

WAYNE CLAASSEN ENGINEERING AND SURVEYING, INC.
P.O. BOX 898 WATERLOO, IOWA 50704-0898

PHONE: (VOICE) 319-235-6294
(FAX) 319-235-0028

UNITED STATES PUBLIC LAND SURVEY CORNER CERTIFICATE

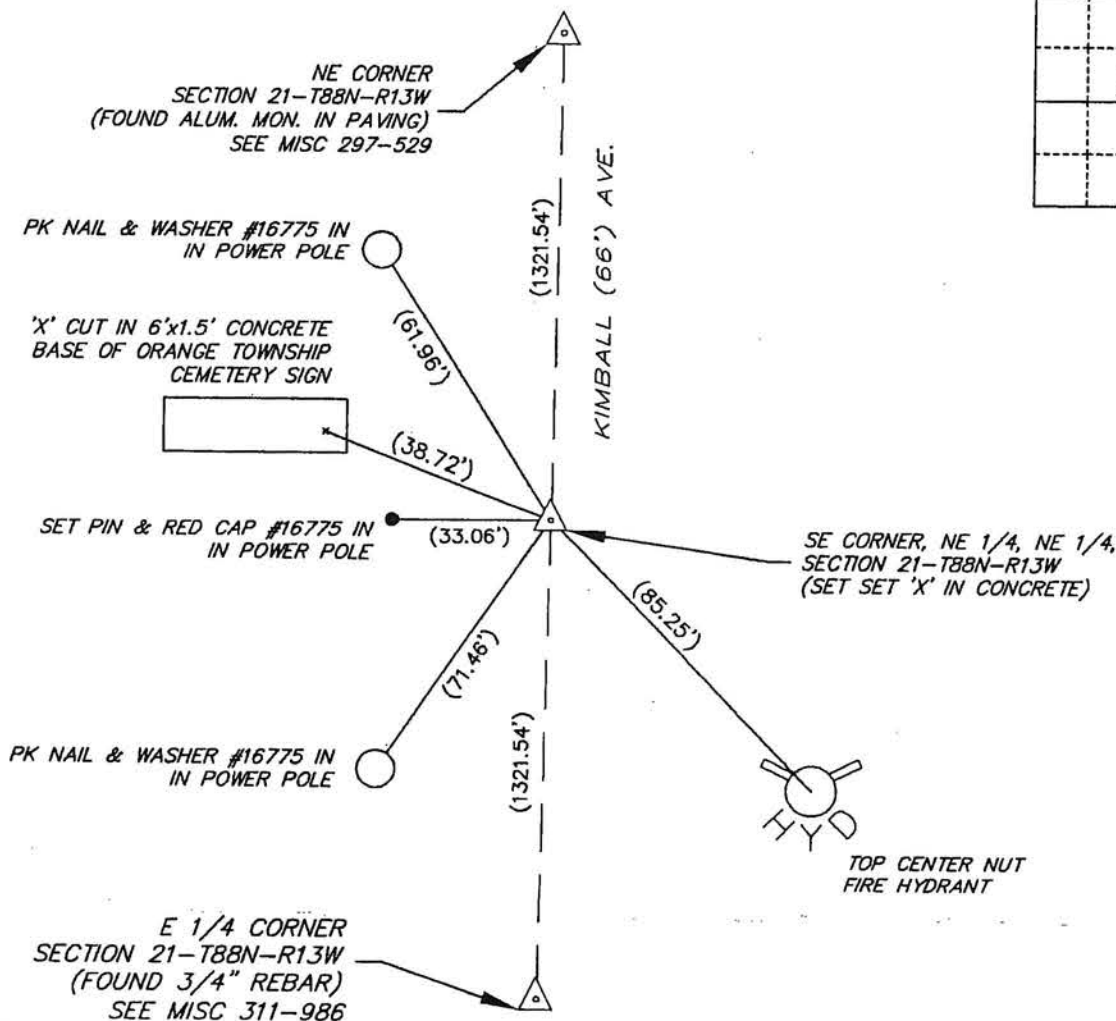
Land Survey Monuments situated in Section 21, Township 88 North, Range 13 West, of the Fifth Principal Meridian, Black Hawk County, Iowa.
Previously recorded in N/A in County Recorder's Office.
(book, page, document number, etc.)

(Show reason for preparing this certificate, the evidence and detailed procedures used in establishing the corner positions and monumentation found or placed.)

Monument Description and Remarks
SE Corner NE 1/4, NE 1/4: No corner certificate on file. Set 'X' cut in concrete at midpoint between the NE corner and the East 1/4 corner.

PLAN - VIEW

(Show a minimum of three reference ties to durable physical objects, relevant monuments and physical conditions that will enable recovery of the corner.)



BK 631, PG. 52

I hereby certify that this land surveying document was prepared and the related survey work was performed by me or under my direct personal supervision and that I am a duly Licensed Land Surveyor under the laws of the State of Iowa.

Signature: David L. Schell, L.S.

Date: Oct 10, 2006 Lic. No. 16775

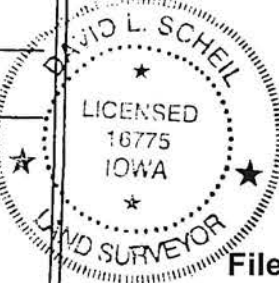
Pages or Sheets Covered by this Seal: THIS SHEET ONLY.

My license renewal date is December 31, 2006

SEAL

List Corners to be Indexed

Corners	Section	Twp	Range
SE CORNER, NE 1/4, NE 1/4,	21	88 N	13 W



File Number: 2007-00008543 Seq: 1