

INDEX ✓ BLACK HAWK COUNTY, IOWA:SS

FEE BOOK # 2005 07905

PROOF ✓ FILED FOR RECORD SEP 27, 2004, AT 4:00 P.M. FEE 1-5.00-1.00/

COMPARED

BLACK HAWK COUNTY RECORDER

ENV WAYNE CLAASSEN ENGINEERING &amp; SURVEYING INC

WAYNE CLAASSEN ENGINEERING AND SURVEYING, INC.  
P.O. BOX 898 WATERLOO, IOWA 50704-0898PHONE: (VOICE) 319-235-6294  
(FAX) 319-235-0028

## UNITED STATES PUBLIC LAND SURVEY CORNER CERTIFICATE

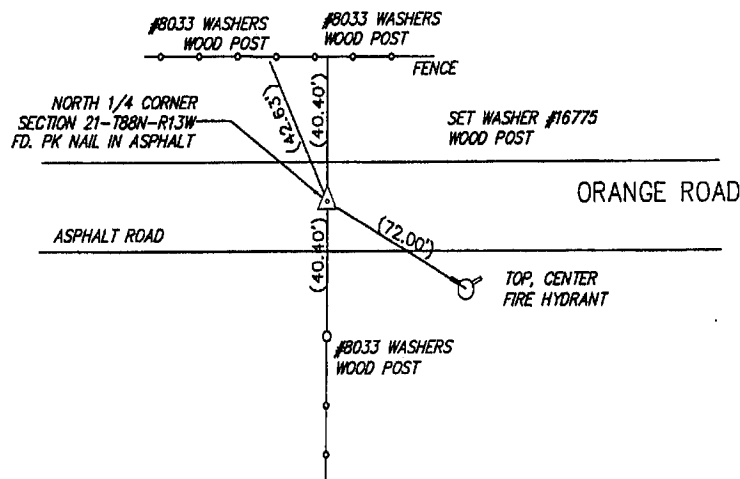
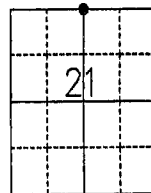
Land Survey Monuments situated in Section 21, Township 88 North, Range 13 West, of the Fifth Principal Meridian, Black Hawk County, Iowa.Previously recorded in MISC. BK. 297, PG. 531 in County Recorder's Office.  
(book, page, document number, etc.)

(Show reason for preparing this certificate, the evidence and detailed procedures used in establishing the corner positions and monumentation found or placed.)

Monument Description and Remarks Previous cert. had std. conc. monument in gravel road. Found PK nail set in asphalt road that matched previous ties.

## PLAN - VIEW

(Show a minimum of three reference ties to durable physical objects, relevant monuments and physical conditions that will enable recovery of the corner.)

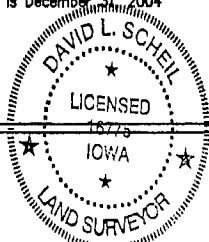


I hereby certify that the survey work was completed and this certificate was prepared by me or under my direct personal supervision and that I am a duly licensed land surveyor under the laws of the state of Iowa.

Signature: David L. Schell  
David L. Schell, L.S.Date: SEPT. 27, 2004 Lic. No. 16775

My license renewal date is December 31, 2004

SEAL



## List Corners to be Indexed

Corners	Section	Twp	Range
N 1/4 Corner,	21	88 N	13 W