



Doc ID: 008336710001 Type: GEN  
Recorded: 02/20/2018 at 09:15:01 AM  
Fee Amt: \$7.00 Page 1 of 1  
Black Hawk County Iowa  
SANDIE L. SMITH RECORDER

File 2018-00013586

Reserved for County Recorder's use.

Kyle J. Helland, 1107 Technology Parkway, Cedar Falls, Iowa 50613-6951, (319)-266-0161

## UNITED STATES PUBLIC LAND SURVEY CORNER CERTIFICATE OF

LAND SURVEY MONUMENTS SITUATED IN SECTION NO. 20, TOWNSHIP NO. 88 NORTH, RANGE  
NO. 13 WEST OF THE FIFTH PRINCIPAL MERIDIAN, BLACK HAWK COUNTY, IOWA.

PREVIOUSLY RECORDED IN FILE 2010-15164

(SHOW REASON FOR PREPARING THIS CERTIFICATE, THE EVIDENCE AND DETAILED PROCEDURES USED IN ESTABLISHING THE  
CORNER POSITIONS AND MONUMENTATION FOUND OR PLACED.)

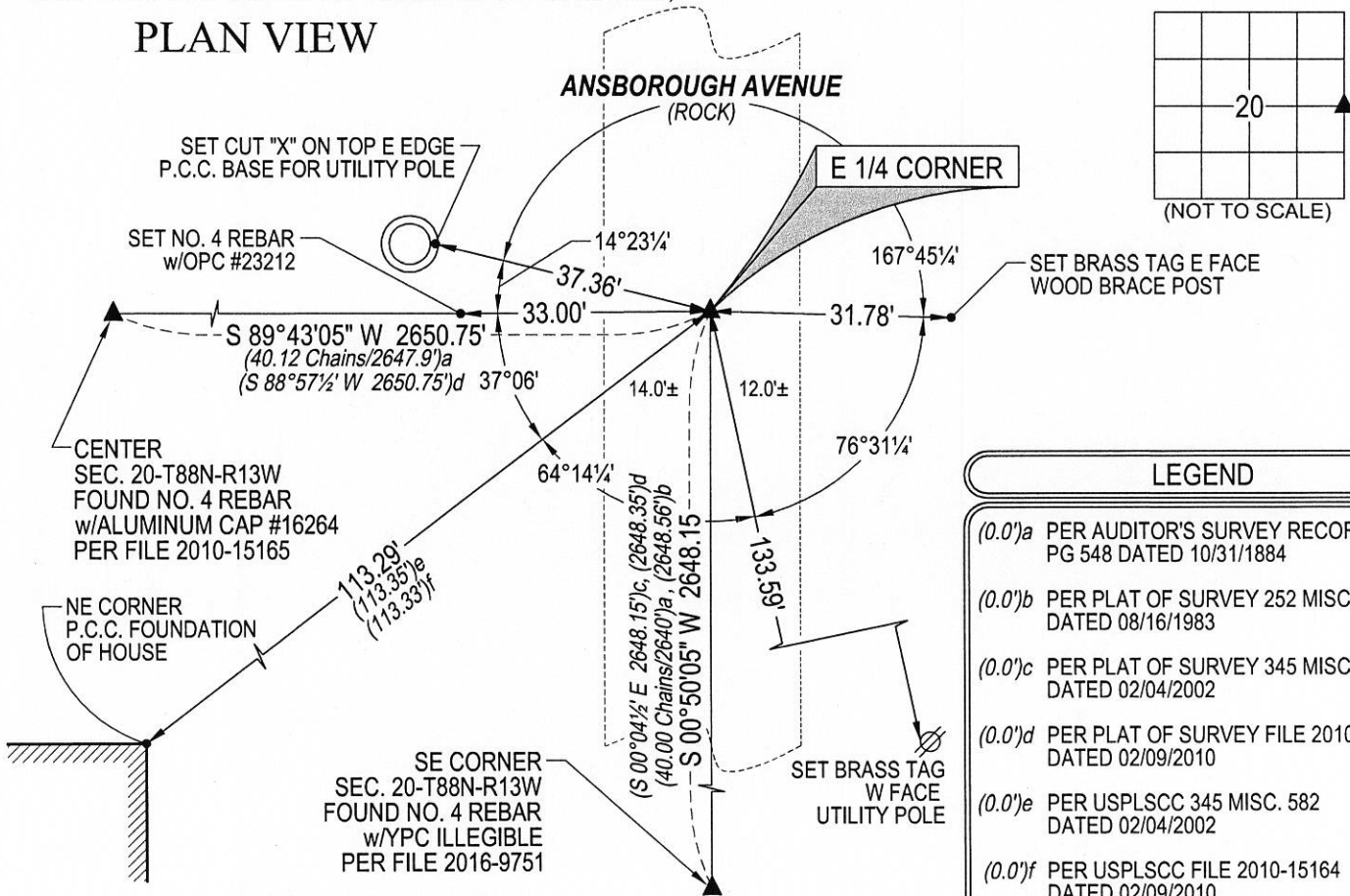
MONUMENT DESCRIPTION AND REMARKS:

MONUMENTATION HAS CHANGED. SURVEY COMPLETED IN THE SE 1/4 OF SEC. 20-T88N-R13W.

→ **E 1/4 CORNER:** USPLSCC FILE 2010-15164 DATED 02/09/2010 CALLS FOR [AUDITOR'S SURVEY RECORD BK 1 PG 548 DATED 10/31/1884 CALLS FOR [STONE]. SURVEYOR'S RECORD BOOK 1 (AUDITOR'S OFFICE) DATED 9/10 & 17/1915 CALLS FOR [STONE]. BLACK HAWK COUNTY ENGINEER REFERENCE TIES (NO DATE) CALLS FOR [FOUND LIMESTONE 16"x9"x5"]. PLAT OF SURVEY 252 MISC. 268 DATED 8/16/1983 CALLS FOR [FO. CONC. MON]. PLAT OF SURVEY 345 MISC. 581 DATED 2/4/2002 CALLS FOR [BROKEN SCM FOUND]. USPLSCC 345 MISC. 582 DATED 2/4/2002 CALLS FOR [FOUND BROKEN SCM 6" DEEP IN GRAVEL ROAD. SET 1/2" Ø REBAR ON EAST SIDE OF MONUMENT 9" DEEP]. FOUND BROKEN OFF STANDARD CONCRETE MONUMENT (9" DEEP) SET NO. 4 REBAR w/ALUMINUM CAP #16264 (7" LONG) ABOVE SAID MONUMENT]. SEARCHED AREA, FOUND (COMPLETELY BENT) NO. 4 REBAR (7" LONG) w/DAMAGED ALUMINUM CAP ABOVE FRACTURED STANDARD CONCRETE MONUMENT. DRILLED HOLE IN TOP OF SAID FOUND FRACTURED STD. CONCRETE MONUMENT USING BEST FIT FROM PREVIOUS REMAINING TIES AND SET "COTTON GIN" SPIKE IN DRILL HOLE (0.6' DEEP).

(SHOW A MINIMUM OF THREE REFERENCE TIES TO DURABLE PHYSICAL OBJECTS, RELEVANT MONUMENTS AND PHYSICAL CONDITIONS THAT WILL ENABLE RECOVERY OF THE CORNER.)

### PLAN VIEW



(BEARINGS ARE ASSUMED)

### LEGEND

- (0.0')a PER AUDITOR'S SURVEY RECORD BK 1 PG 548 DATED 10/31/1884
- (0.0')b PER PLAT OF SURVEY 252 MISC. 268 DATED 08/16/1983
- (0.0')c PER PLAT OF SURVEY 345 MISC. 581 DATED 02/04/2002
- (0.0')d PER PLAT OF SURVEY FILE 2010-15163 DATED 02/09/2010
- (0.0')e PER USPLSCC 345 MISC. 582 DATED 02/04/2002
- (0.0')f PER USPLSCC FILE 2010-15164 DATED 02/09/2010



HELLAND ENGINEERING & SURVEYING, LTD.  
1107 Technology Parkway  
Cedar Falls, Iowa 50613-6951  
(319)-266-0161

SHINER = 8d. NAIL & 1 5/16" Ø METAL SHINER DRAWN BY: JBL  
BRASS TAG = 8d. NAIL & 13/16" Ø BRASS TAG  
OPC = PLASTIC CAP (O=ORANGE, R=RED, Y=YELLOW)  
(00') RECORDED AS FILE NAME: 18-108-22.DWG



I hereby certify that this land surveying document was prepared and the related survey work was performed by me or under my direct personal supervision and that I am a duly licensed Professional Land Surveyor under the laws of the State of Iowa.

Kyle J. Helland  
License Number 23212  
My license renewal date is December 31, 2019.  
All pages or sheets are covered by this seal except:

### LIST CORNERS TO BE INDEXED

CORNER	SECTION	TOWNSHIP	RANGE
E 1/4 CORNER	20	88N	13W
W 1/4 CORNER	21	88N	13W