

WAYNE CLAASSEN ENGINEERING AND SURVEYING, INC.
P.O. BOX 898 WATERLOO, IOWA 50704-0898

PHONE: (VOICE) 319-235-6294
(FAX) 319-235-0028

UNITED STATES PUBLIC LAND SURVEY CORNER CERTIFICATE

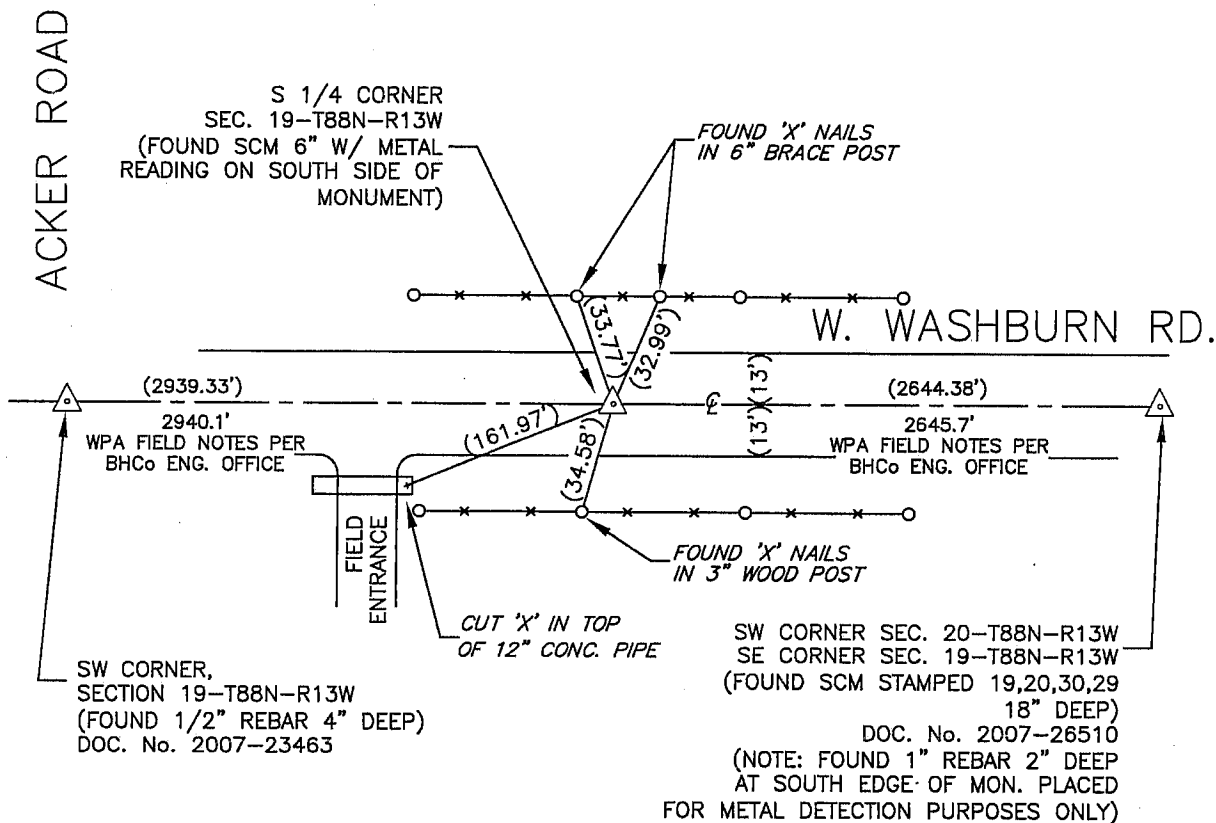
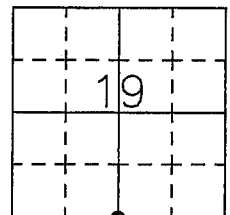
Land Survey Monuments situated in Section 19, Township 88 North, Range 13 West, of the Fifth Principal Meridian, Black Hawk County, Iowa.

Previously recorded in _____ in County Recorder's Office.
(book, page, document number, etc.)

Monument Description and Remarks

No certificate on file. The following note was found in the WPA field notes located in the Black Hawk County Engineer's Office, dated October 15, 1940 for this section corner: "At location indicated by random line dug hole 4' sq. and 24" deep. Found limestone 12"x8"x4" iron pipe 2"x30" and wood stake 18"x3"x1" Lowered all evidence in place and set C.M. on top with cap marked 19 30. Set top of C.M. 12" deep." Found SCM that reasonably match chaining notes.

PLAN - VIEW



BK 588-58

I hereby certify that this land surveying document was prepared and the related survey work was performed by me or under my direct personal supervision and that I am a duly Licensed Land Surveyor under the laws of the State of Iowa.

Signature: David L. Scheil
David L. Scheil, L.S.

Date: SEPT. 08, 2007 Lic. No. 16775

Pages or Sheets Covered by this Seal: THIS SHEET ONLY.

My license renewal date is December 31, 2010

SEAL

List Corners to be Indexed

Corners	Section	Twp	Range
S 1/4 CORNER,	19	88 N	13 W

