

SC ✓  
MISC ✓  
INDEX 8<sub>N</sub>  
MARGIN  
PROOF  
COMPARE

BLACK HAWK COUNTY IOWA:SS  
FILED FOR RECORD FEB 16, 2000 AT  
1:30 P. M. AND RECORDED IN BOOK 337  
OF MISC PAGE 226

017097

*Charles J. Lee*

RECORDER

FEE 1-5.00/

HAROLD MICHELS

410 BRENTWOOD AVE

WATERLOO, IA 50701

Harold F. Michels 410 Brentwood Ave., Waterloo, Iowa 50701 319-235-7770

## UNITED STATES PUBLIC LAND SURVEY CORNER CERTIFICATE

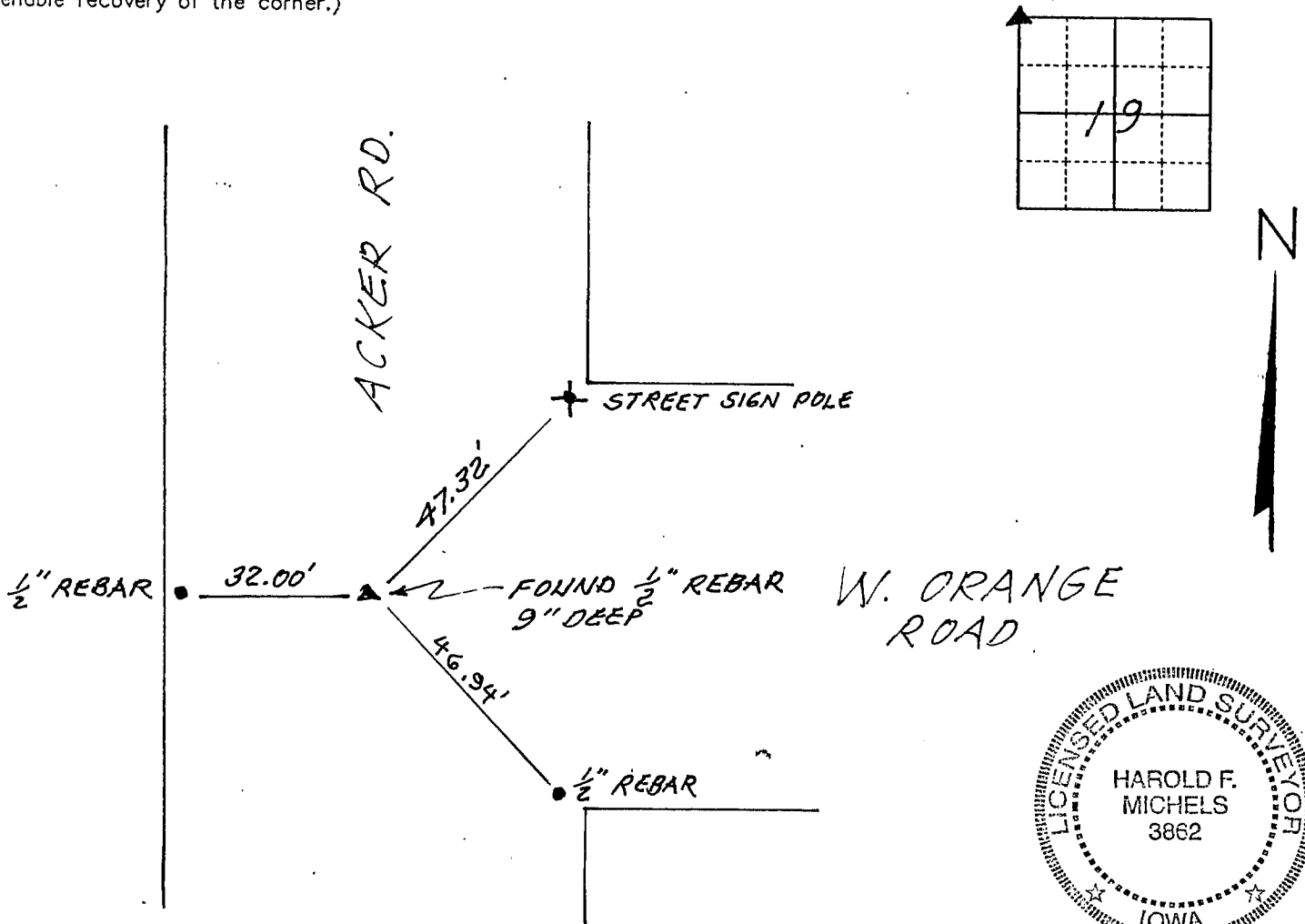
Land Survey Monuments situated in Section 19, Township 88 North, Range 13 West, of the Fifth Principal Meridian, BLACK HAWK County, Iowa.  
Previously recorded in (none) in County Recorder's Office.  
(book, page, document number, etc.)

(Show reason for preparing this certificate, the evidence and detailed procedures used in establishing the corner positions and monumentation found or placed.)

Monument Description and Remarks FOUND  $\frac{1}{2}$ " REBAR 9" BELOW ROAD SURFACE.  
SET NEW TIES. USED REMAINS OF OLD TIES FROM COUNTY  
ENGINEER'S OFFICE TO VERIFY LOCATION.

### PLAN - VIEW

(Show a minimum of three reference ties to durable physical objects, relevant monuments and physical conditions that will enable recovery of the corner.)



I hereby certify that the survey work was completed and this certificate was prepared by me or under my direct personal supervision and that I am a duly registered land surveyor under the laws of the state of Iowa.

Signature: *Harold F. Michels*

Date: 2-14-00 Harold F. Michels Reg. No. 3862

My registration renewal date is Dec. 31, 01.

SEAL

#### List Corners to be Indexed

Corners	Section	Twp	Range
NW	19	88	13

