

Catherine L. Debe

BLACK HAWK COUNTY RECORDER

SCHENCK ENGINEERING

PREPARED BY: SCHENCK ENGINEERING CO., 216 BROOKERIDGE DR., WATERLOO, IA 50702

UNITED STATES PUBLIC LAND SURVEY CORNER CERTIFICATE OF

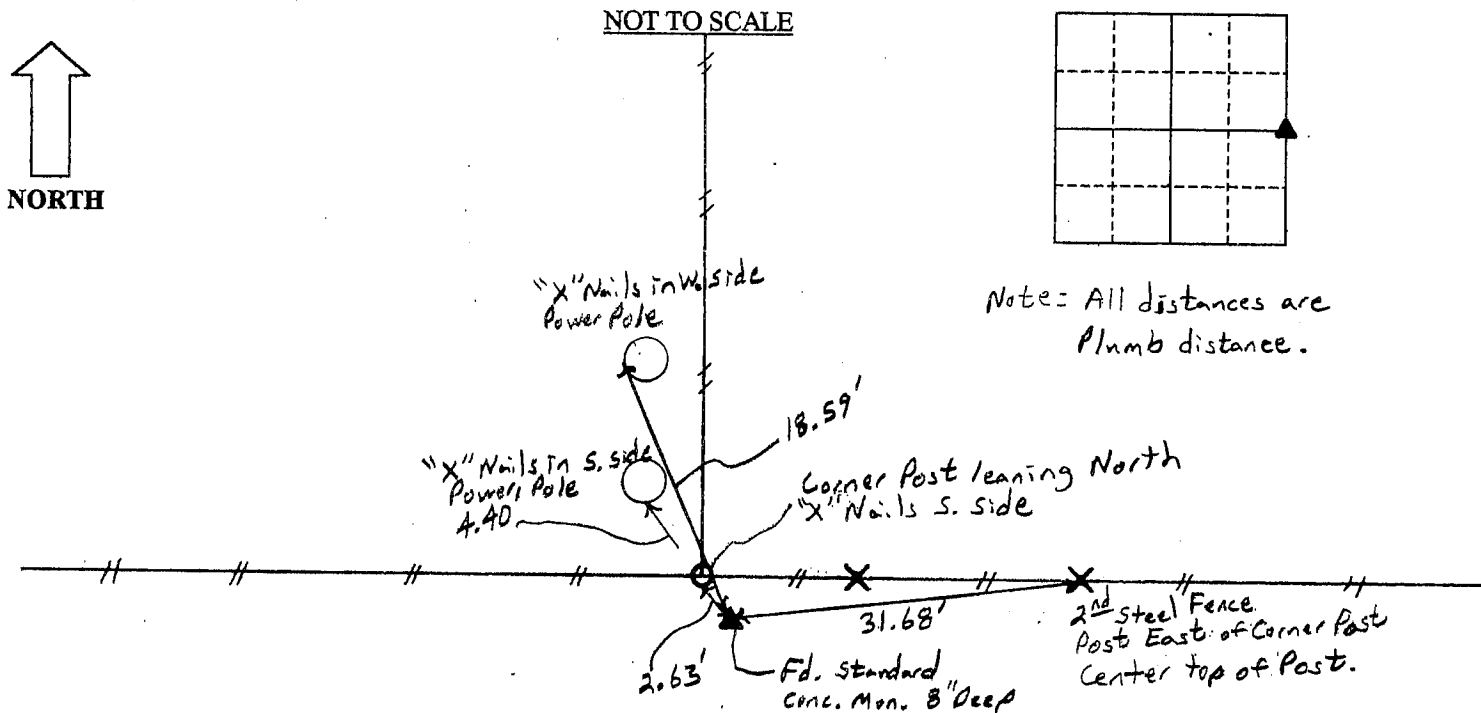
Land Survey Monuments situated in Section 19, Township 88, Range 13
of the Fifth Principal Meridian, Black Hawk County, Iowa. Previously recorded in Book _____, Page _____, in County Recorder's Office.

(Show reason for preparing this certificate, the evidence and detailed procedure used in establishing the corner positions and monumentation found or placed.)

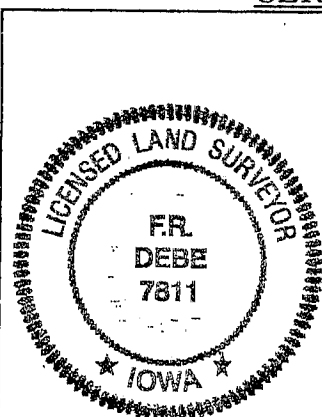
Monument Description and Remarks: Found Standard Concrete Monument 8" Deep 2.6'
Southeast of leaning Corner Post. All Distances are Plumb distance.
E.D.M. Distance from NE Cor. 19-88-13 to E 1/4 Cor. 19-88-13 is 2639.88'

PLAN - VIEW

(Show a minimum of three reference ties to durable physical objects, relevant monuments and physical conditions that will enable recovery of the corner.)

FIELD SURVEY: R.S.PREPARED BY: R.S.

CERTIFICATION



I hereby certify that this land surveying document was prepared by me or under my direct personal supervision and that I am a duly licensed Land Surveyor under the laws of the State of Iowa.

F. R. Debe

(date)

1-12-04

License Number 7811

My license renewal date is December 31, 2004.

Pages or sheets covered by this seal: 1

LIST CORNERS TO BE INDEXED

Corner	Section	Township	Range
E 1/4	19	88	13