

Recorded

SLSI 9-90

UNITED STATES PUBLIC LAND SURVEY CORNER CERTIFICATE

OF

Land Survey Monuments situated in Section 18, Township 88 N, Range 13 W, of the Fifth Principal Meridian, BLACK HAWK County, Iowa.
Previously recorded in N/A in County Recorder's Office.

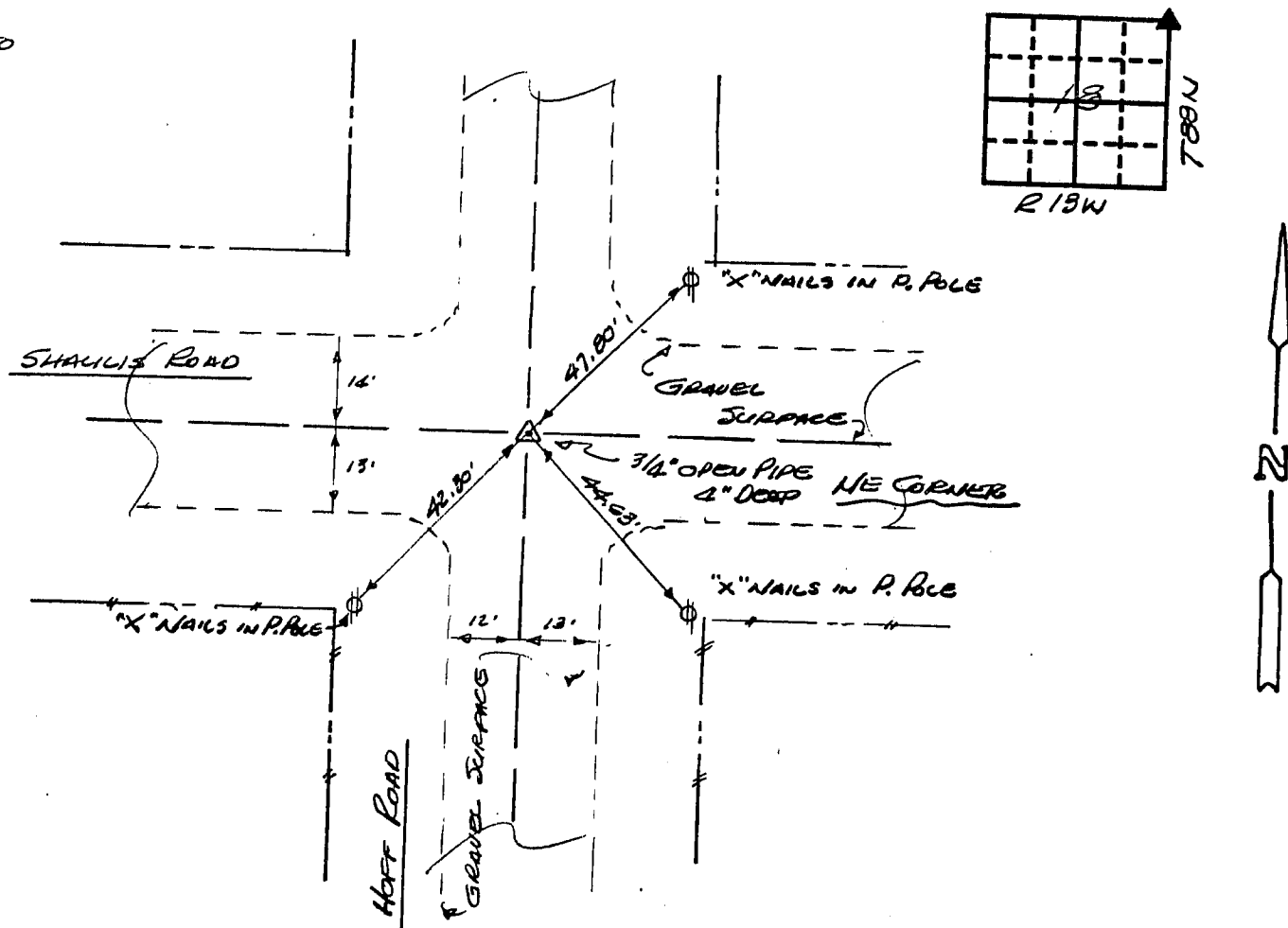
(book, page, document number, etc.)
Now reason for preparing this certificate, the evidence and detailed procedures used in establishing the corner positions and monumentation found or placed.)

Monument Description and Remarks: FOUND 3/4" OPEN PIPE 4" DEEP (2-14-91). CCMASSEN
ENGINEERING HAS A RECORD OF THIS CORNER FROM 1970, WHEN 5CM WAS FOUND 15" DEEP.

PLAN - VIEW

(Show a minimum of three reference ties to durable physical objects, relevant monuments and physical conditions that will enable recovery of the corner.)

65-51
253-4
5R 9-50



I hereby certify that the survey work was completed and this certificate was prepared by me or under my direct personal supervision and that I am a duly registered land surveyor under the laws of the state of Iowa.

Signature: F. William King
Name typed or printed: F. WILLIAM KING
Date: 9-11-1991 Reg. No. 8033



Corners	List Corners to be Indexed	Section	Twp	Range
NE	18	88N	13W	

MISC. BK. 295 p. 130