

Misc  
INDEX  
MARGIN  
PROOF  
COMPARE

BLACK HAWK COUNTY IOWA: SS  
Filed for record Feb 14, 1997 at  
3:00 P.M. and recorded in Book 323  
of Misc Page 989.

15258

Patricia A. Lass Recorder

Fee 1-5.00/  
WAYNE CLAASSEN ENGINEERING AND SURVEYING, INC.  
P.O. BOX 898 WATERLOO, IOWA 50704-0898

PHONE: (VOICE) 319-235-6294  
(FAX) 319-235-0028

## UNITED STATES PUBLIC LAND SURVEY CORNER CERTIFICATE

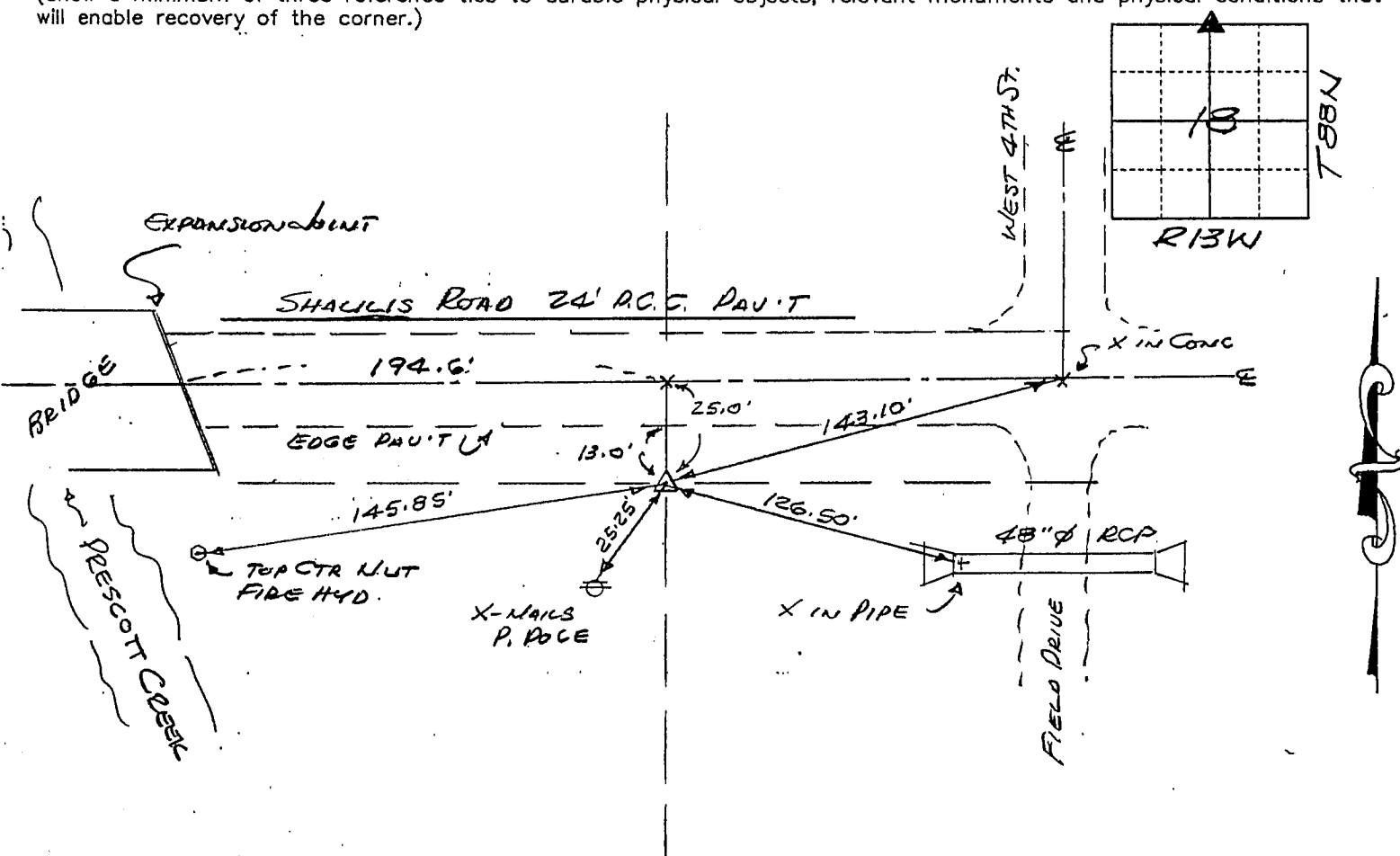
Land Survey Monuments situated in Section 18, Township 88N, Range 13W, of the Fifth Principal Meridian, BLACK HAWK County, Iowa.  
Previously recorded in MISC. 295-126 in County Recorder's Office.  
(book, page, document number, etc.)

(Show reason for preparing this certificate, the evidence and detailed procedures used in establishing the corner positions and monumentation found or placed.)

Monument Description and Remarks TIES MISC. 295-126 WERE PRIOR TO GRADING & PAVING  
SHALLIS ROAD. N 1/4 COR. WAS RESET FROM CONST TIES BY CES DURING THIS  
PROJECT. MONUMENT WAS FOUND BY CES IN 1979.

### PLAN - VIEW

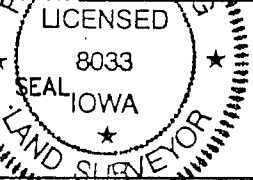
(Show a minimum of three reference ties to durable physical objects, relevant monuments and physical conditions that will enable recovery of the corner.)



412-56

I hereby certify that the survey work was completed and this certificate was prepared by me or under my direct personal supervision and that I am a duly licensed land surveyor under the laws of the state of Iowa.

Signature: F. William King  
(Name typed or printed: F. William King)  
Date: 2/14/1997 Lic. No. 8033



#### List Corners to be Indexed

Corners	Section	Twp	Range
<u>N 1/4</u>	<u>18</u>	<u>88N</u>	<u>13W</u>

BOOK 323 PAGE 989