

Recorded

# UNITED STATES PUBLIC LAND SURVEY CORNER CERTIFICATE

SLSI 9-90

OF

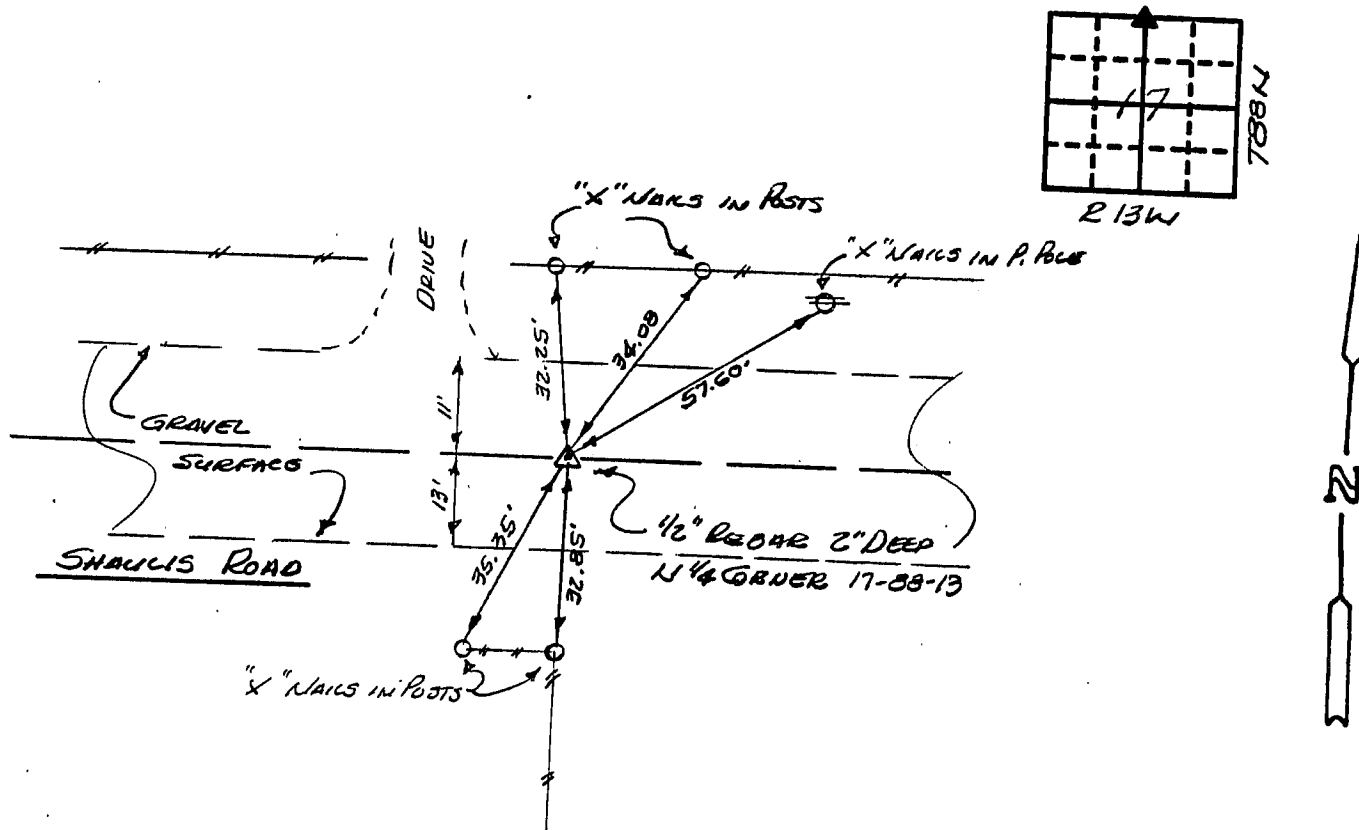
Land Survey Monuments situated in Section 17, Township 88N, Range 13W, of the Fifth Principal Meridian, BLACK HAWK County, Iowa.  
Previously recorded in N/A (book, page, document number, etc.) in County Recorder's Office.

(Show reason for preparing this certificate, the evidence and detailed procedures used in establishing the corner positions and monumentation found or placed.)

Monument Description and Remarks: FOUND 1/2" Ø REBAR 2" DEEP. CLAASSEN ENGINEERING  
FOUND 5CM 33" DEEP IN 1970. 3/4" Ø BAR WAS SET OVER MONUMENT AT THAT TIME.  
AND SINCE REPLACED WITH 1/2" Ø REBAR

## PLAN - VIEW

(Show a minimum of three reference ties to durable physical objects, relevant monuments and physical conditions that will enable recovery of the corner.)



I hereby certify that the survey work was completed and this certificate was prepared by me or under my direct personal supervision and that I am a duly registered land surveyor under the laws of the state of Iowa.

Signature: F. William King  
Name typed or printed: F. WILLIAM KING  
Date: 3-15-1991 Reg. No. 8033



SEAL

Corners	List Corners to be Indexed	Section	Twp	Range
<u>N 1/4</u>	<u>17</u>	<u>88N</u>	<u>13W</u>	

MISC. BK. 295 p. 114