

Index Legend	
County:	Black Hawk
Section(s):	16 Township: 88 N Range: 13 W
Corner(s):	East 1/4 Corner
Requestor:	City of Waterloo
Proprietor:	City of Waterloo
Surveyor:	William W. Castle
Surveyor Company:	City of Waterloo Engineering Department 715 Mulberry Street, Waterloo, IA 50703
Return To:	715 Mulberry St, Waterloo, IA 50703 291-4312

Doc ID: 009369000001 Type: GEN  
Recorded: 08/28/2018 at 03:33:53 PM  
Fee Amt: \$7.00 Page 1 of 1  
Black Hawk County Iowa  
SANDIE L. SMITH RECORDER  
File **2019-00003404**

United States Public Land Survey Corner Certificate

Land Survey Monument situated in Section 16, Township 88 North, Range 13 West, of the Fifth Principal Meridian, Black Hawk County, Iowa.

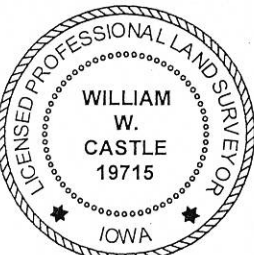
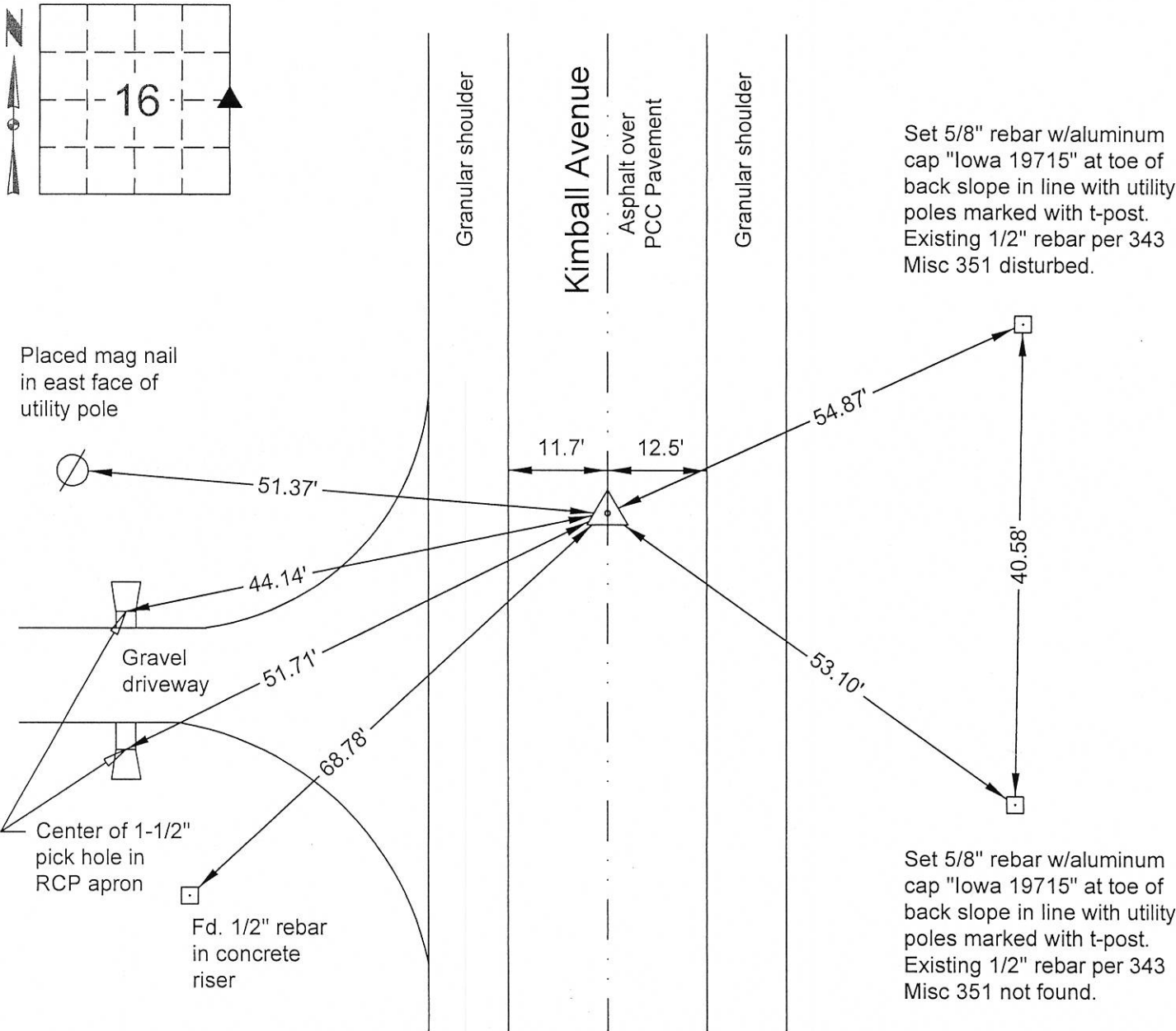
Previously recorded in Misc Book 343 at Page 351 in the Black Hawk County Recorder's Office.

Reason for preparing this certificate, the evidence and detailed procedures used in establishing the corner position, and monumentation found or placed.

Existing pavement rubblized then covered with 3" of asphalt as part of City of Waterloo FY2011 Asphalt Overlay Program, Contract No. 796. Prior to construction, found 3" aluminum disc in concrete pavement. After construction, set 2" mag nail with 2" aluminum washer stamped "Section Corner - Iowa PLS 19715" at corner using project controls and reference ties.

PLAN VIEW

Show a minimum of three reference ties to durable physical objects, relevant monuments and physical conditions that will enable recovery of the corner.



I hereby certify that this surveying document was prepared and the related survey work was performed by me or under my direct personal supervision and that I am a duly licensed Land Surveyor under the laws of the State of Iowa.  
*William W. Castle* 8/20/18  
William W. Castle, PLS Date  
License Number 19715  
My License Renewal Date is December 31, 2019.  
Pages or sheets covered by this seal: 1/1

List corners to be indexed			
Corners	Section	Twp	Range
E 1/4	16	88	13

City of Waterloo Engineering Department  
715 Mulberry Street, Waterloo, Iowa 50703  
Phone: (319) 291-4312 Fax: (319) 291-4262

Drawn By: WWC Scale: none  
Field Work Date: 8/29/2011 & 8/10/2018  
Date Drawn: 8-20-2018

Sheet No.  
**1 of 1**