



Doc ID: 007574150001 Type: GEN
Recorded: 03/13/2017 at 02:03:16 PM
Fee Amt: \$7.00 Page 1 of 1
Black Hawk County Iowa
SANDIE L. SMITH RECORDER

File 2017-00015850

WAYNE CLAASSEN ENGINEERING AND SURVEYING, INC.
P.O. BOX 898 WATERLOO, IOWA 50704-0898

PHONE: (VOICE) 319-235-6294
(FAX) 319-235-0028

UNITED STATES PUBLIC LAND SURVEY CORNER CERTIFICATE

Land Survey Monuments situated in Section 15, Township 88 North, Range 13 West, of the Fifth Principal Meridian, Black Hawk County, Iowa.

Previously recorded in MISC. BOOK 299, PAGE 744 in County Recorder's Office.
(book, page, document number, etc.)

Monument Description and Remarks

Found 1/2" rebar as per above Corner Certificate.

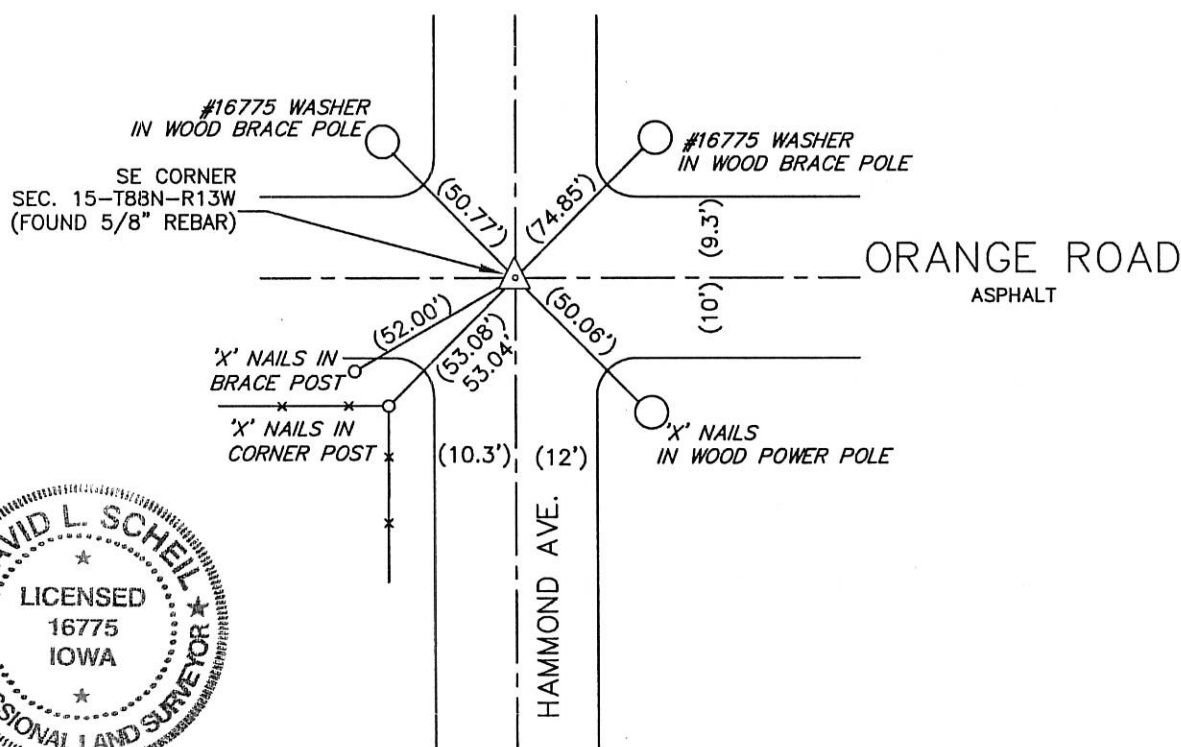
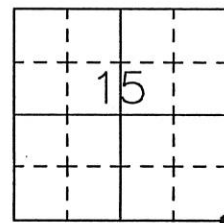
PLAN - VIEW

Reason for filing certificate:

- ☐ There is no certificate on file with the Recorder's Office.
☐ Accepts corner position which differs from the one shown in above document.
☐ The corner monument was replaced or modified.
☒ The reference ties in above document were incorrect or missing.

000.00 DENOTES RECORD DIMENSION
FROM MISC. BOOK 299, PAGE 744

(000.00) DENOTES FIELD DIMENSION



697-16

I hereby certify that this land surveying document was prepared and the related survey work was performed by me or under my direct personal supervision and that I am a duly Licensed Land Surveyor under the laws of the State of Iowa.

Signature: David L. Scheil, L.S.

Date: MARCH 09, 2017 Lic. No. 16775

Pages or Sheets Covered by this Seal: THIS SHEET ONLY.

My license renewal date is December 31, 2018

SEAL

Corners	Section	Twp	Range
SE CORNER,	15	88 N	13 W
SW CORNER,	14	88 N	13 W
NE CORNER,	22	88 N	13 W
NW CORNER,	23	88 N	13 W