

Recorded

SLSI9-90

UNITED STATES PUBLIC LAND SURVEY CORNER CERTIFICATE  
OF

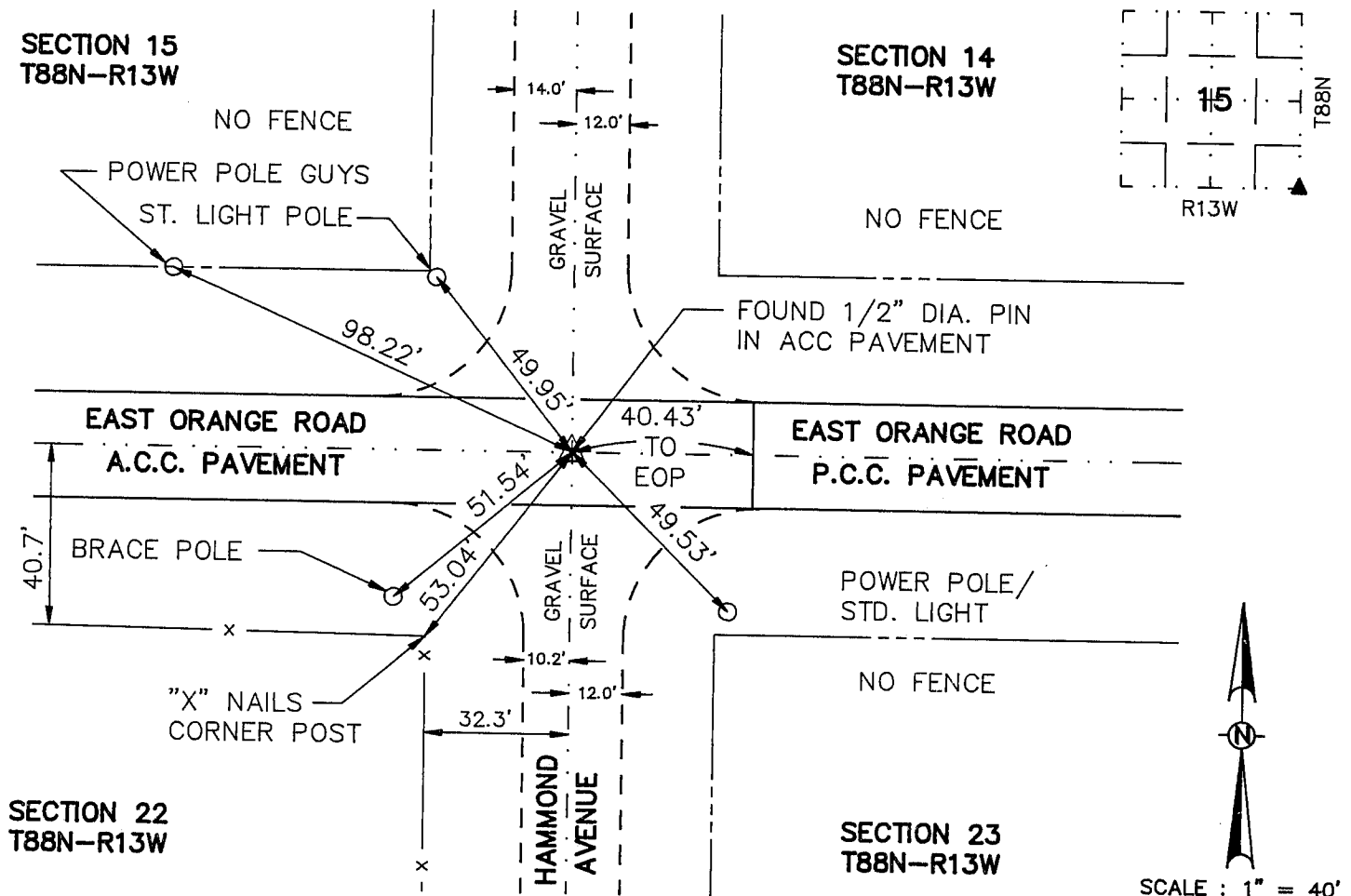
Land Survey Monuments situated in Section 15, Township 88, Range 13, of the Fifth Principal Meridian, BLACK HAWK County, Iowa.  
Previously recorded in \_\_\_\_\_ in County Recorder's Office.  
(book, page, document number, etc.)

(Show reason for preparing this certificate, the evidence and detailed procedures used in establishing the corner positions and monumentation found or placed.)

Monument Description and Remarks: FOUND 1/2" IRON PIN IN SURFACE OF A.C.C. PAVEMENT,  
40.7' NORTH OF SOUTH R.O.W. FENCE

PLAN - VIEW

(Show a minimum of three reference ties to durable physical objects, relevant monuments and physical conditions that will enable recovery of the corner.)

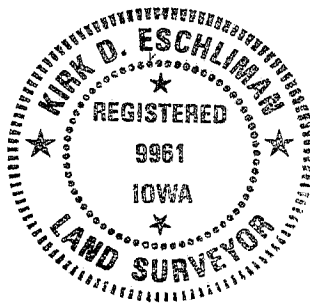


I hereby certify that the survey work was completed and this certificate was prepared by me or under my direct personal supervision and that I am a duly registered land surveyor under the laws of the state of Iowa.

Signature: Kirk D. Eschliman  
Name typed or printed: Kirk D. Eschliman

Date: Jan. 27, 1992 Reg. No. Ia. R.L.S. 9961

SEAL



Corners	List Corners to be Indexed	Section	Twp	Range
SE	15	88N	13W	

MISC. BK. 299 p. 744