



Doc ID: 008336660001 Type: GEN  
Recorded: 02/20/2018 at 09:08:34 AM  
Fee Amt: \$7.00 Page 1 of 1  
Black Hawk County Iowa  
SANDIE L. SMITH RECORDER

File 2018-00013581

Reserved for County Recorder's use.

Kyle J. Helland, 1107 Technology Parkway, Cedar Falls, Iowa 50613-6951, (319)-266-0161

# UNITED STATES PUBLIC LAND SURVEY CORNER CERTIFICATE OF

LAND SURVEY MONUMENTS SITUATED IN SECTION NO. 15, TOWNSHIP NO. 88 NORTH, RANGE  
NO. 13 WEST OF THE FIFTH PRINCIPAL MERIDIAN, BLACK HAWK COUNTY, IOWA.  
PREVIOUSLY RECORDED IN N/A

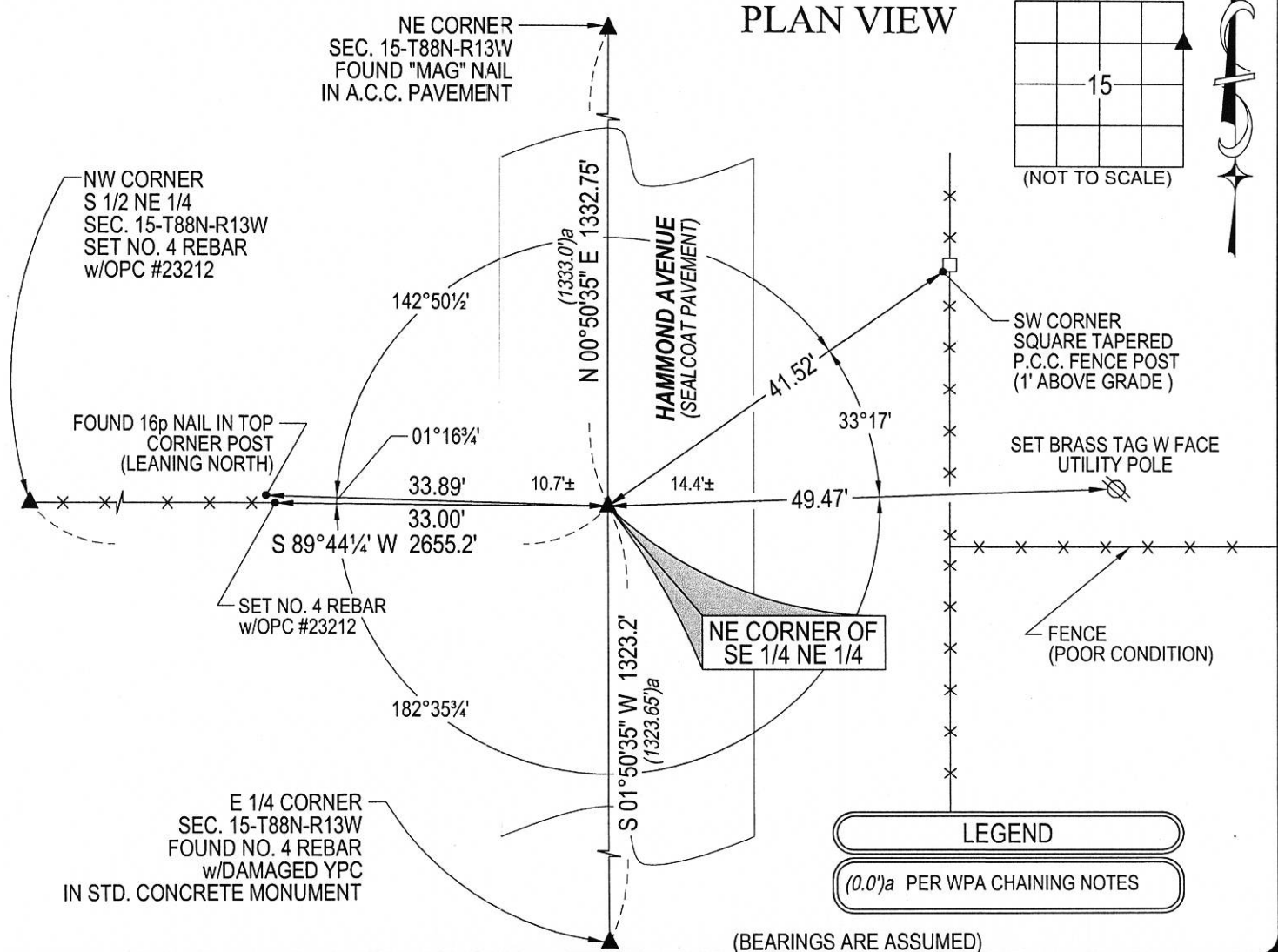
(SHOW REASON FOR PREPARING THIS CERTIFICATE, THE EVIDENCE AND DETAILED PROCEDURES USED IN ESTABLISHING THE  
CORNER POSITIONS AND MONUMENTATION FOUND OR PLACED.)

## MONUMENT DESCRIPTION AND REMARKS:

NO USPLSCC ON FILE. SURVEY COMPLETED IN THE NE 1/4 OF SEC. 15-T88N-R13W.

→ **NE CORNER OF SE 1/4 NE 1/4:** NO BLACK HAWK COUNTY ENGINEER REFERENCE TIES AVAILABLE.  
SEARCHED AREA, NOTHING FOUND. THEREFORE SET NO. 4 REBAR x 12" LONG w/OPC #23212 IN SEALCOAT  
PAVEMENT, ON A LINE BETWEEN THE NE CORNER AND THE E 1/4 CORNER AND IN LINE WITH FENCE LINE  
RUNNING WEST. LOCATION OF SAID SET CORNER CORRESPONDS (WITHIN REASON) TO WPA CHAINING  
NOTES.

(SHOW A MINIMUM OF THREE REFERENCE TIES TO DURABLE PHYSICAL OBJECTS, RELEVANT MONUMENTS AND PHYSICAL  
CONDITIONS THAT WILL ENABLE RECOVERY OF THE CORNER.)



HELLAND ENGINEERING & SURVEYING, LTD.  
1107 Technology Parkway  
Cedar Falls, Iowa 50613-6951  
(319)-266-0161

SHINER = 8d. NAIL & 1 5/16"Ø METAL SHINER DRAWN BY: JBL  
BRASS TAG = 8d. NAIL & 13/16"Ø BRASS TAG  
OPC = PLASTIC CAP (O=ORANGE, R=RED, Y=YELLOW)  
(00') RECORDED AS FILE NAME: 18-102-32.DWG



I hereby certify that this land surveying document was prepared  
and the related survey work was performed by me or under my  
direct personal supervision and that I am a duly licensed  
Professional Land Surveyor under the laws of the State of Iowa.  
*Kyle J. Helland* 2/9/18  
Kyle J. Helland  
License Number 23212  
My license renewal date is December 31, 2019.  
All pages or sheets are covered by this seal except:

LIST CORNERS TO BE INDEXED			
CORNER	SECTION	TOWNSHIP	RANGE
NE COR. SE 1/4 NE 1/4	15	88N	13W
SE COR. NE 1/4 NE 1/4	15	88N	13W
SW COR. NW 1/4 NW 1/4	14	88N	13W
NW COR. SW 1/4 NW 1/4	14	88N	13W

49.00 ✓ H/L

(7)

E 1