

2ND
BATU

SLSI 9-90

UNITED STATES PUBLIC LAND SURVEY CORNER CERTIFICATE

OF

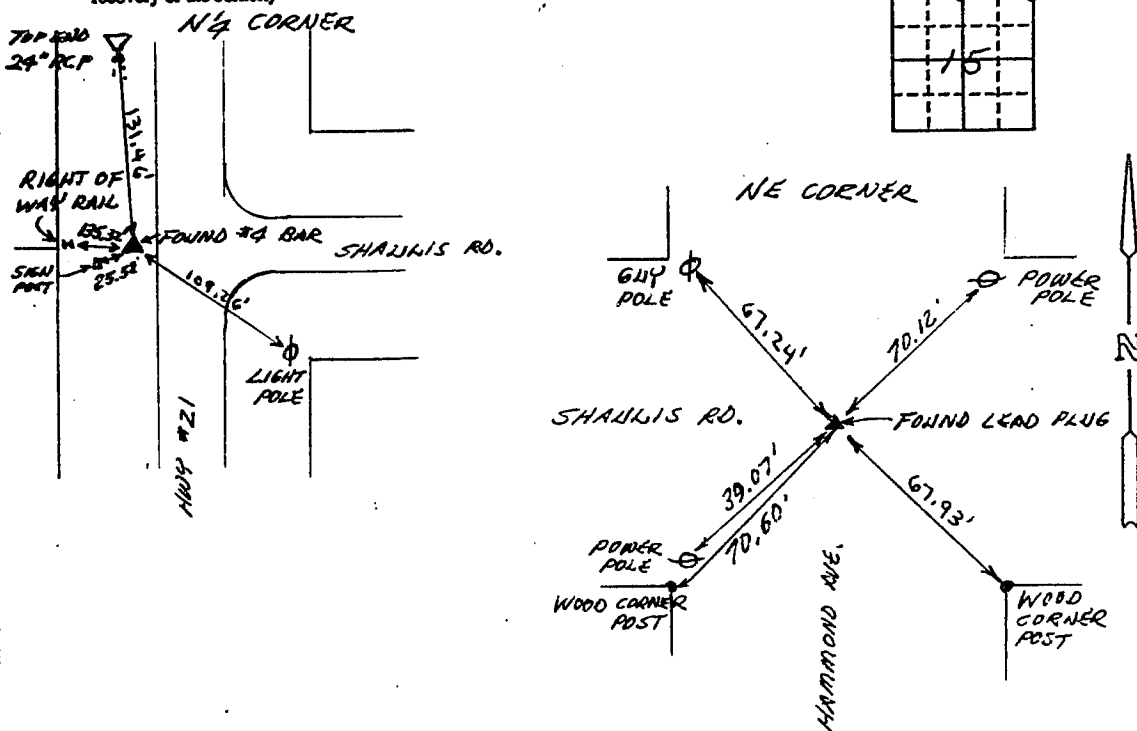
Land Survey Monuments situated in Section 15, Township 88 N., Range 13 W., of the Fifth Principal Meridian, BLACK HAWK County, Iowa.
Previously recorded in (not applicable) in County Recorder's Office.
(book, page, document number, etc.)

(Show reason for preparing this certificate, the evidence and detailed procedures used in establishing the corner positions and monumentation found or placed.)

Monument Description and Remarks: FOUND CORNERS AS SHOWN, SET
NEW TIES.

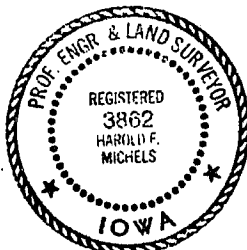
PLAN - VIEW

(Show a minimum of three reference ties to durable physical objects, relevant monuments and physical conditions that will enable recovery of the corner.)



I hereby certify that the survey work was completed and this certificate was prepared by me or under my direct personal supervision and that I am a duly registered land surveyor under the laws of the state of Iowa.

Signature: Harold F. Michels
Name typed or printed: Harold F. Michels
Date: 4-25-94 Reg. No. 3862



SEAL

Corners	List Corners to be Indexed Section	Twp	Range
N $\frac{1}{4}$ COR.	15	88	13
NE COR. NE $\frac{1}{4}$

BOOK 118

PAGE 982