



Doc ID: 008336670001 Type: GEN
Recorded: 02/20/2018 at 09:08:41 AM
Fee Amt: \$7.00 Page 1 of 1
Black Hawk County Iowa
SANDIE L. SMITH RECORDER

File 2018-00013582

Reserved for County Recorder's use.

Kyle J. Helland, 1107 Technology Parkway, Cedar Falls, Iowa 50613-6951, (319)-266-0161

UNITED STATES PUBLIC LAND SURVEY CORNER CERTIFICATE OF

LAND SURVEY MONUMENTS SITUATED IN SECTION NO. 15, TOWNSHIP NO. 88 NORTH, RANGE
NO. 13 WEST OF THE FIFTH PRINCIPAL MERIDIAN, BLACK HAWK COUNTY, IOWA.
PREVIOUSLY RECORDED IN MISC. BOOK 319 PAGE 639.

(SHOW REASON FOR PREPARING THIS CERTIFICATE, THE EVIDENCE AND DETAILED PROCEDURES USED IN ESTABLISHING THE
CORNER POSITIONS AND MONUMENTATION FOUND OR PLACED.)

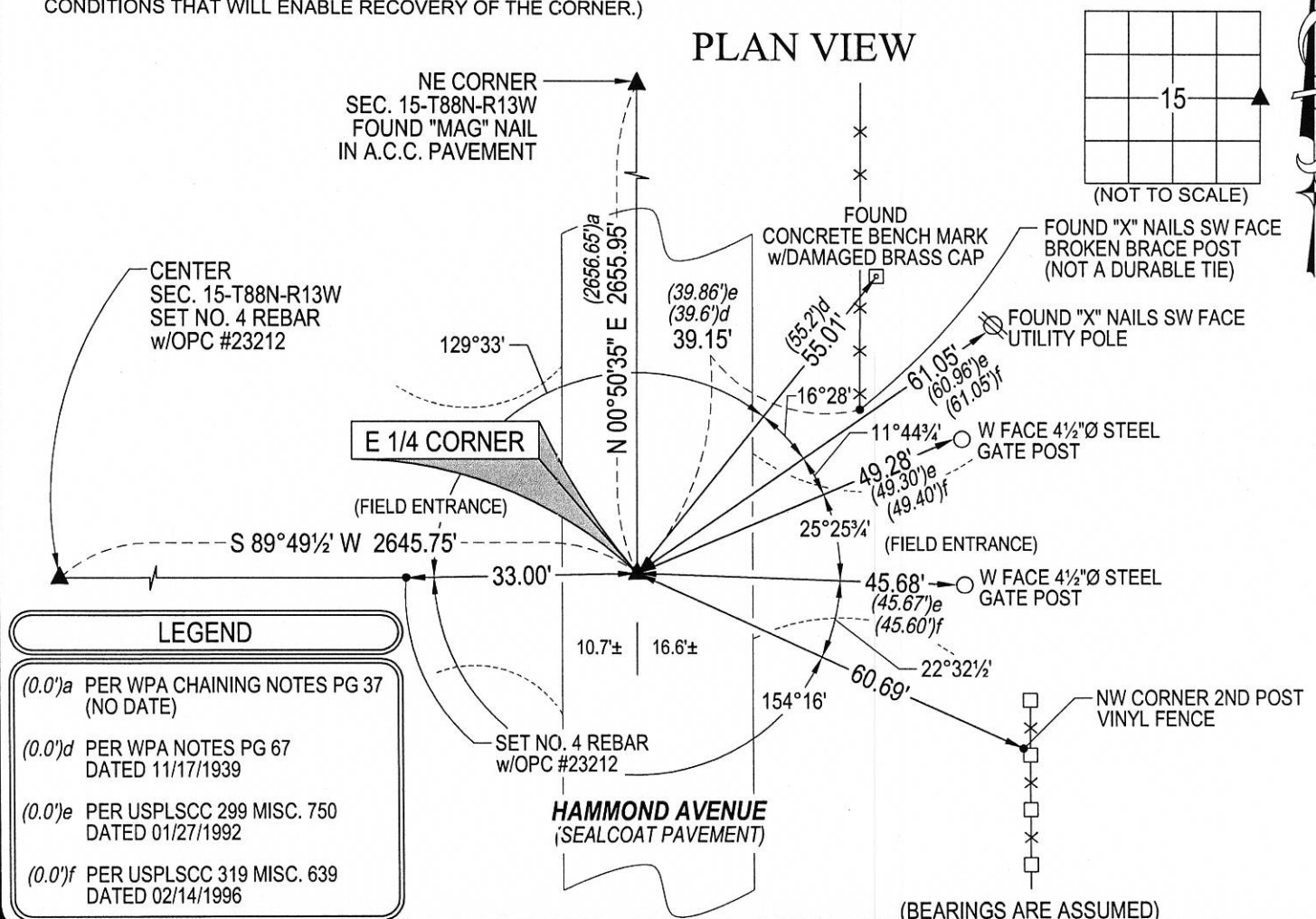
MONUMENT DESCRIPTION AND REMARKS:

MONUMENTATION HAS CHANGED. SURVEY COMPLETED IN THE NE 1/4 OF SEC. 15-T88N-R13W.

→ **E 1/4 CORNER:** WPA NOTES PAGE 67 DATED 11/17/1939 CALLS FOR [AT LOCATION INDICATED BY RANDOM
LINE, DUG HOLE 5' SQ. 18" DEEP. FOUND: - LIME STONE 14"x10"x4 1/2" WOOD STAKE 17"x3"x1" LOWERED ALL
EVIDENCE IN PLACE AND SET C.M. WITH CAP MARKED: 15+14 SET TOP OF C.M. 12" DEEP.]. USPLSCC IN MISC.
BOOK 299 PAGE 750 DATED 01/27/1992 CALLS FOR [FOUND 1/2" IRON PIN WITH I.D. CAP MARKED IOWA #9961].
USPLSCC IN MISC. BOOK 319 PAGE 639 DATED 02/14/1996 CALLS FOR [FOUND STONE 4" DEEP @ THE W 1/4
COR. OF SEC. 14-TWN.88-R13W OF THE 5TH P.M.]. SEARCHED AREA USING TIES, FOUND NO. 4 REBAR
w/DAMAGED YPC (0.5' DEEP) DRILLED INTO TOP OF BROKEN STD. CONCRETE MONUMENT IN SEALCOAT
PAVEMENT. NOTE: PLACEMENT OF SAID FOUND NO. 4 REBAR w/DAMAGED YPC IS SLIGHTLY NORTHEAST OF
CENTER IN SAID FOUND STD. CONCRETE MONUMENT.

(SHOW A MINIMUM OF THREE REFERENCE TIES TO DURABLE PHYSICAL OBJECTS, RELEVANT MONUMENTS AND PHYSICAL
CONDITIONS THAT WILL ENABLE RECOVERY OF THE CORNER.)

PLAN VIEW



LEGEND

- (0.0')a PER WPA CHAINING NOTES PG 37
(NO DATE)
- (0.0')d PER WPA NOTES PG 67
DATED 11/17/1939
- (0.0')e PER USPLSCC 299 MISC. 750
DATED 01/27/1992
- (0.0')f PER USPLSCC 319 MISC. 639
DATED 02/14/1996



HELLAND ENGINEERING & SURVEYING, LTD.
1107 Technology Parkway
Cedar Falls, Iowa 50613-6951
(319)-266-0161

SHINER = 8d. NAIL & 1 5/16" Ø METAL SHINER DRAWN BY: JBL
BRASS TAG = 8d. NAIL & 13/16" Ø BRASS TAG
OPC = PLASTIC CAP (O=ORANGE, R=RED, Y=YELLOW)
(00') RECORDED AS FILE NAME: 18-102-22.DWG



I hereby certify that this land surveying document was prepared
and the related survey work was performed by me or under my
direct personal supervision and that I am a duly licensed
Professional Land Surveyor under the laws of the State of Iowa.

Kyle J. Helland
License Number 23212
My license renewal date is December 31, 2019.
All pages or sheets are covered by this seal except:

LIST CORNERS TO BE INDEXED			
CORNER	SECTION	TOWNSHIP	RANGE
E 1/4 CORNER	15	88N	13W
W 1/4 CORNER	14	88N	13W