

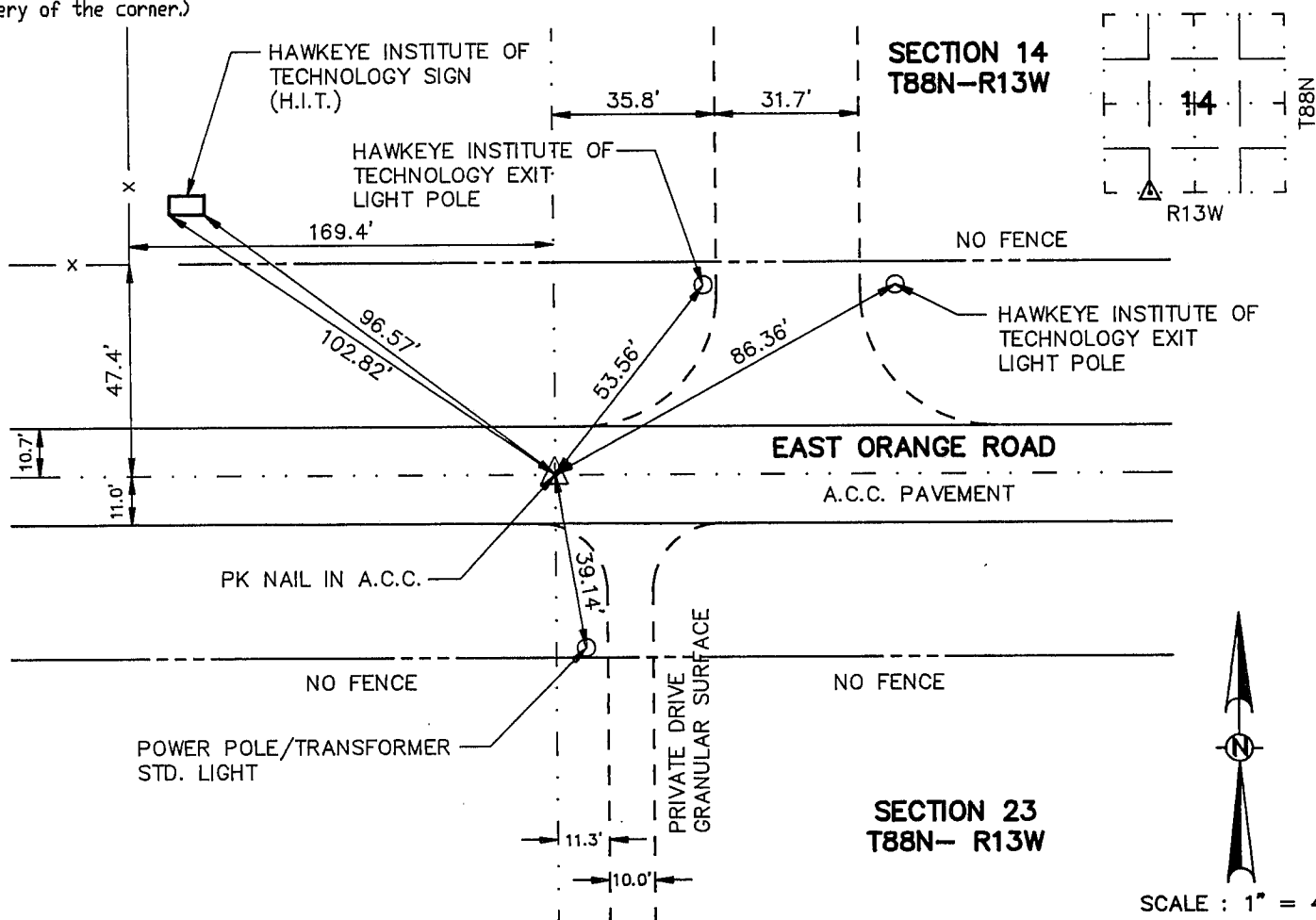
SLS|9-90

Land Survey Monuments situated in Section 14, Township 88, Range 13, of the Fifth Principal Meridian, BLACK HAWK County, Iowa. Previously recorded in _____ in County Recorder's Office.
(back page, document number, etc.)

(Show reason for preparing this certificate, the evidence and detailed procedures used in establishing the corner positions and monumentation found or placed.)

Monument Description and Remarks: FOUND PK NAIL IN A.C.C.

(Show a minimum of three reference ties to durable physical objects, relevant monuments and physical conditions that will enable recovery of the corner.)



I hereby certify that the survey work was completed and this certificate was prepared by me or under my direct personal supervision and that I am a duly registered land surveyor under the laws of the state of Iowa.

Signature: Kirk D. Eschliman
Name typed or printed: Kirk D. Eschliman

Date: Jan. 27, 1992 Reg. No. Ia. R.L.S. 9961



Corners	List Corners to be Indexed Section	Twp	Range
SE OF SW/4-SW/4	14	88N	13W

MISC. BK. 299 p. 756