

U.S. PUBLIC LAND SURVEY CORNER CERTIFICATE

OF
LAND SURVEY MONUMENTS SITUATED IN SECTION 14, TOWNSHIP 88 NORTH,
RANGE 13 WEST, OF THE FIFTH PRINCIPAL MERIDIAN, BLACKHAWK, COUNTY, IOWA.

PREVIOUSLY RECORDED IN BOOK _____ AT PAGE _____

FOR RECORDER'S USE

REASON FOR PREPARING CERTIFICATE:

- ☒ A) THERE IS NO CERTIFICATE FOR THE CORNER ON FILE WITH THE RECORDER OF THE COUNTY IN WHICH THE CORNER IS LOCATED.
- ☐ B) CORNER POSITION DIFFERS FROM THAT SHOWN IN THE PUBLIC RECORDS OF THE COUNTY IN WHICH THE CORNER IS LOCATED.
- ☐ C) THE CORNER MONUMENT HAS BEEN REPLACED OR MODIFIED.
- ☐ D) THE REFERENCE TIES REFERRED TO IN AN EXISTING PUBLIC RECORD ARE INCORRECT.

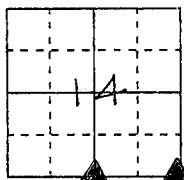
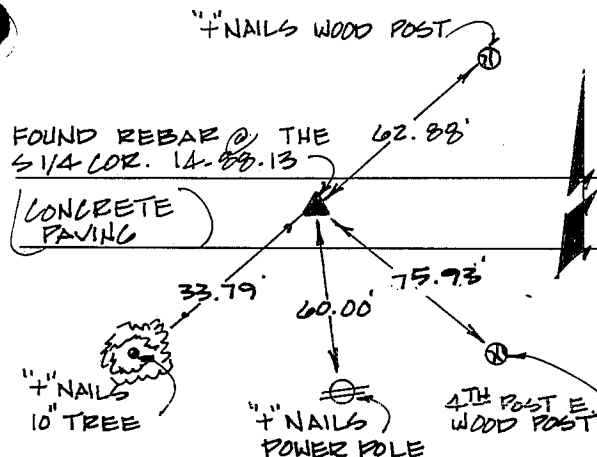
MONUMENT DESCRIPTION AND REMARKS:

FOUND REBAR @ THE S 1/4 COR. OF SEC. 14. TWN. 88- R13W- 5TH P.M.

FOUND 5/8" Ø REBAR @ THE S.E. COR. OF SEC. 14. TWN. 88- R13W- 5TH P.M.

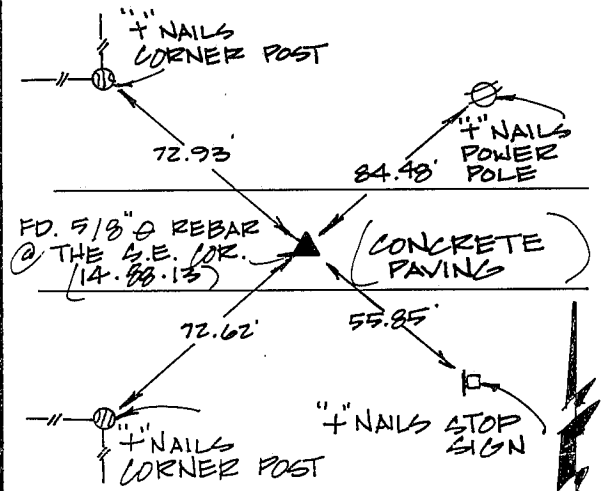
REFERENCE TIE DRAWING

S 1/4 COR. 14-88-13



NOT TO SCALE

S.E. COR. 14-88-13

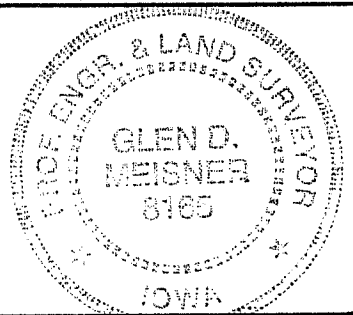


I HEREBY CERTIFY THAT THE CORNER LOCATION(S) SHOWN ON THIS RECORD WERE DETERMINED BY ME OR UNDER MY DIRECT PERSONAL SUPERVISION AND THAT THIS U.S. PUBLIC LAND SURVEY MONUMENT RECORD IS CORRECT AND COMPLETE TO THE BEST OF MY KNOWLEDGE AND BELIEF.

Glen D. Meisner 2-14-96

Glen D. Meisner, P.E. & L.S. Ia. Reg. No. 8165

My Biennial Registration Expires December 31, 19 97



| | | | | | | |
|---|--|--|-------------|------------|-----------|-------|
| GOVERNMENT CORNER 5/8" TIE PIN SET CENTERLINE EXISTING FENCE LINE R.O.W. LINE | SHEET TITLE: U.S. PUBLIC LAND SURVEY CORNER CERTIFICATE | MMS CONSULTANTS, INC. Iowa City, Iowa 319-351-8282 | | | | |
| | PROJECT TITLE: SECTION CORNER TIE | | | | | |
| D N T.M.R. | C K O.D.M. | A P O.D.M. | DATE 2-2-96 | SCALE NONE | FNO B 267 | PNO J |

572427

MISC. BK 319 p. 638

Recorder
 Fee 1-5.00/
 MMS CONSULTANTS INC
 1917 SOUTH GILBERT
 IOWA CITY IA 52240
 ENV

BOOK 319 PAGE 638