

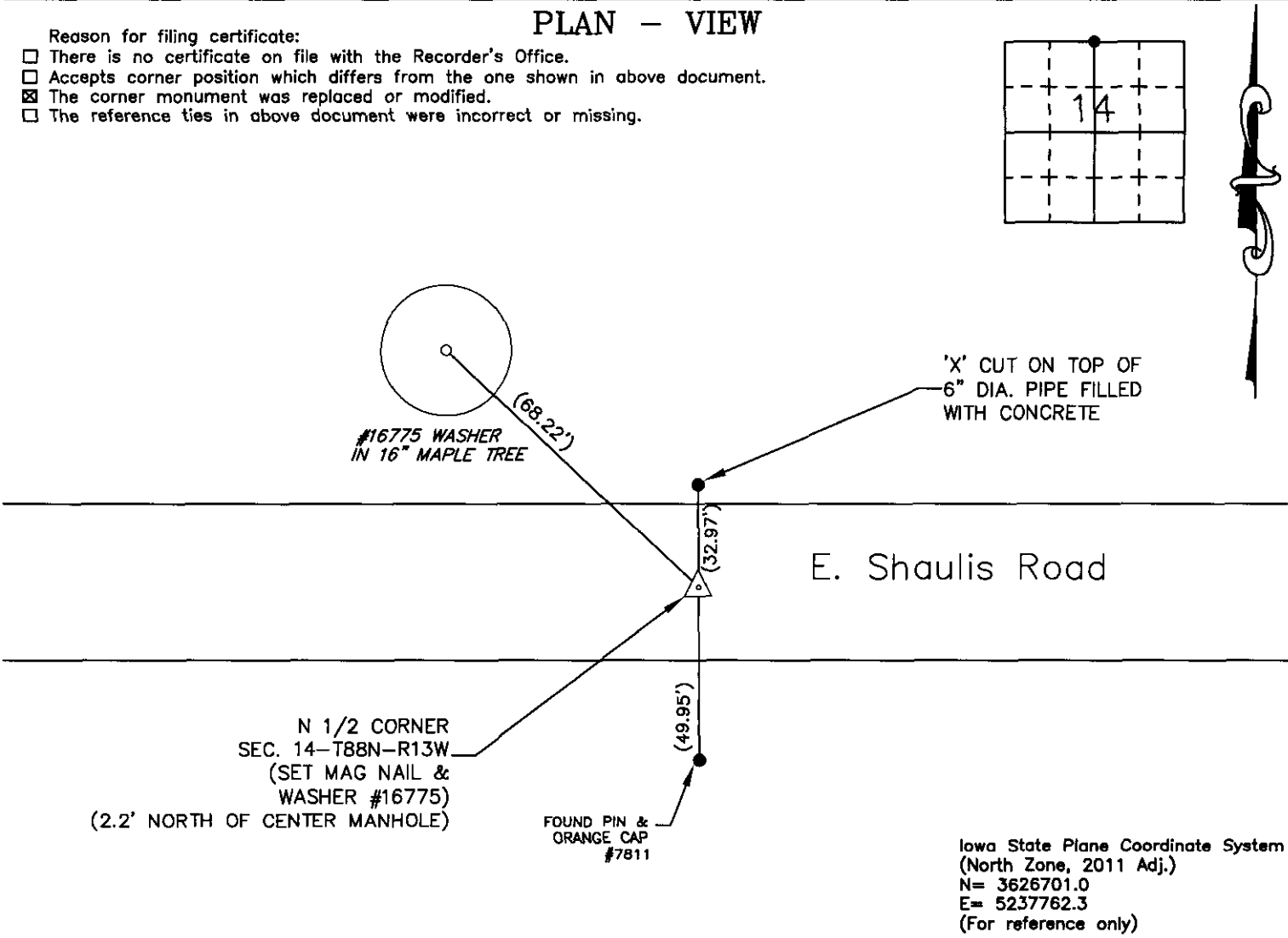
✱ WAYNE CLAASSEN ENGINEERING AND SURVEYING, INC.  
P.O. BOX 898    WATERLOO, IOWA 50704-0898

PHONE: (VOICE) 319-235-6294  
(FAX) 319-235-0028

UNITED STATES PUBLIC LAND SURVEY CORNER CERTIFICATE

Land Survey Monuments situated in Section 14, Township 88 North, Range 13 West, of the Fifth Principal Meridian, Black Hawk County, Iowa.  
Previously recorded in 2006-26961 in County Recorder's Office.  
(book, page, document number, etc.)

Monument Description and Remarks  
Went to corner and did not find corner referred to in above certificate. Set mag nail and washer #16775 using ties from above certificate.



I hereby certify that this land surveying document was prepared and the related survey work was performed by me or under my direct personal supervision and that I am a duly Licensed Land Surveyor under the laws of the State of Iowa.

Signature: David L. Schell  
David L. Schell, L.S.

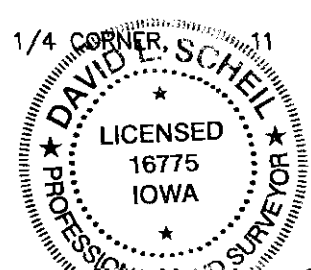
Date: March 06, 2019 Lic. No. 16775

Pages or Sheets Covered by this Seal: THIS SHEET ONLY.

My license renewal date is December 31, 2018

SEAL

List Corners to be Indexed			
Corners	Section	Twp	Range
N 1/4 CORNER,	14	88 N	13 W
S 1/4 CORNER,	11	88 N	13 W



2019-00013734 Sec. 1