

UNITED STATES PUBLIC LAND SURVEY CORNER CERTIFICATE
OF

Land Survey Monuments situated in Section 13, Township 88 N, Range 13 W, of the Fifth Principal Meridian, Black Hawk County, Iowa
Previously recorded in Book N/A, Page .

Show reason for preparing this certificate, the evidence and detailed procedures used in establishing the corner positions and monumentation found or placed.)

Monument Description and Remarks: Northeast corner 13-88-13

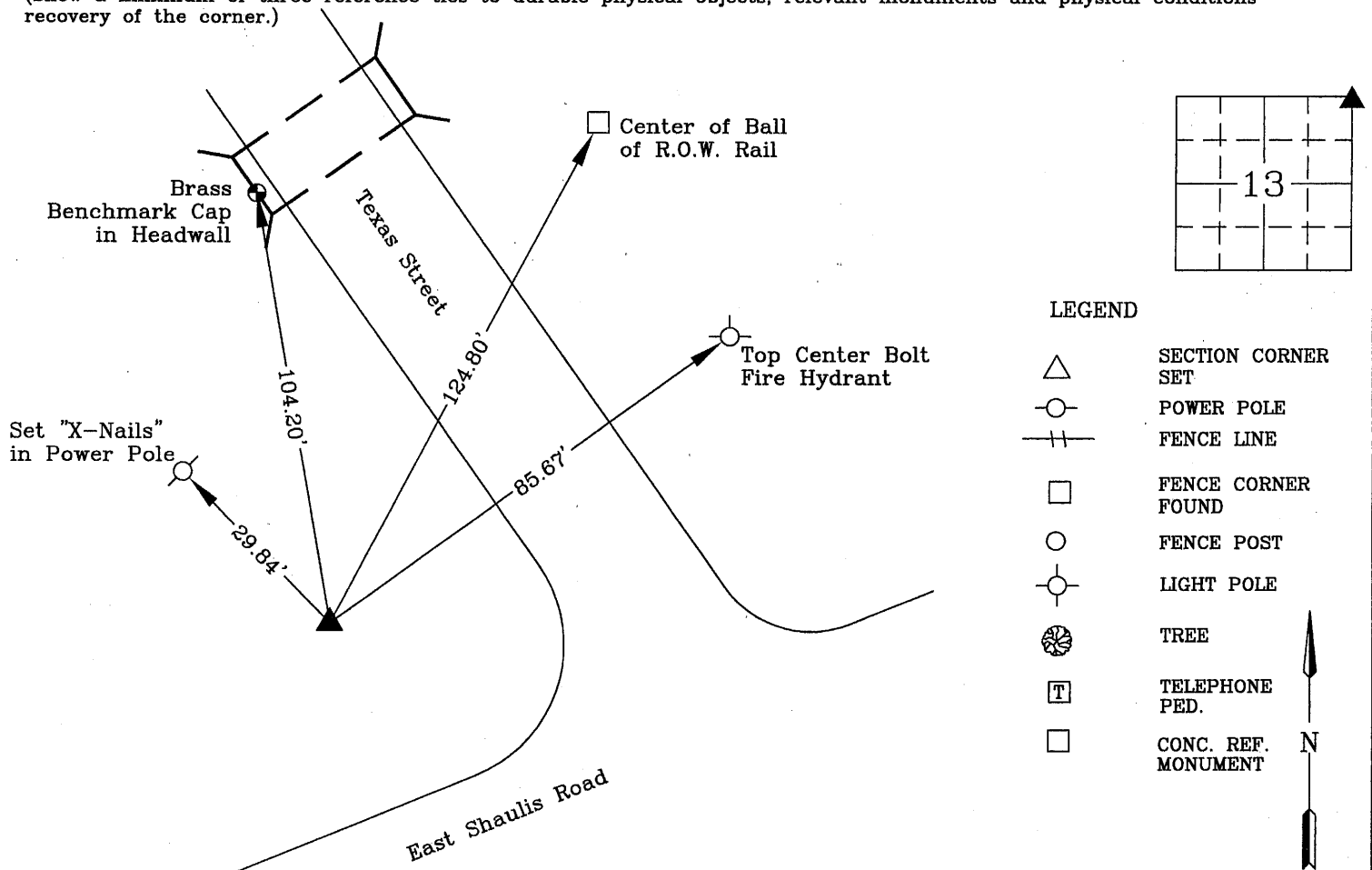
Found 1/2" Ø Rebar in 4"x4" Concrete Monument 9" Deep per I.D.O.T. Corner Stone Survey dated 12-23-76.

This corner was used for a survey in the NE 1/4 of 13-88-13.

No previous corner certificate on file.

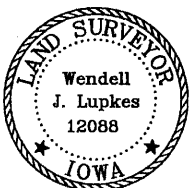
PLAN - VIEW

(Show a minimum of three reference ties to durable physical objects, relevant monuments and physical conditions recovery of the corner.)



All distances were measured with EDM

I hereby certify that this land surveying document was prepared and the related survey work was performed by me or under my direct personal supervision and that I am a duly licensed Land Surveyor under the laws of the State of Iowa.



Wendell J. Lupkes 2-3-12
WENDELL J. LUPKES, L.S. DATE
License number 12088
My license renewal date is December 31, 2012
Pages or sheets covered by this seal: 1

List Corner to be Indexed

Corner	Section	Twp	Range
NE Cor.	13	88 N	13 W



VJ Engineering
1501 Technology Parkway
Cedar Falls, Iowa - 319-266-5829

SECTION CORNER
REFERENCE TIES

scale
NONE
drawn by
MAK
date
1/23/12