

* Prepared By: Matthew A. Kofta, P.L.S., VJ Engineering, 1501 Technology Parkway, Suite 100, Cedar Falls, Iowa, 50613, (319) 266-5829
Return To: Matthew A. Kofta, P.L.S., VJ Engineering, 1501 Technology Parkway, Suite 100, Cedar Falls, Iowa, 50613, (319) 266-5829

United States Public Land Survey Corner Certificate of

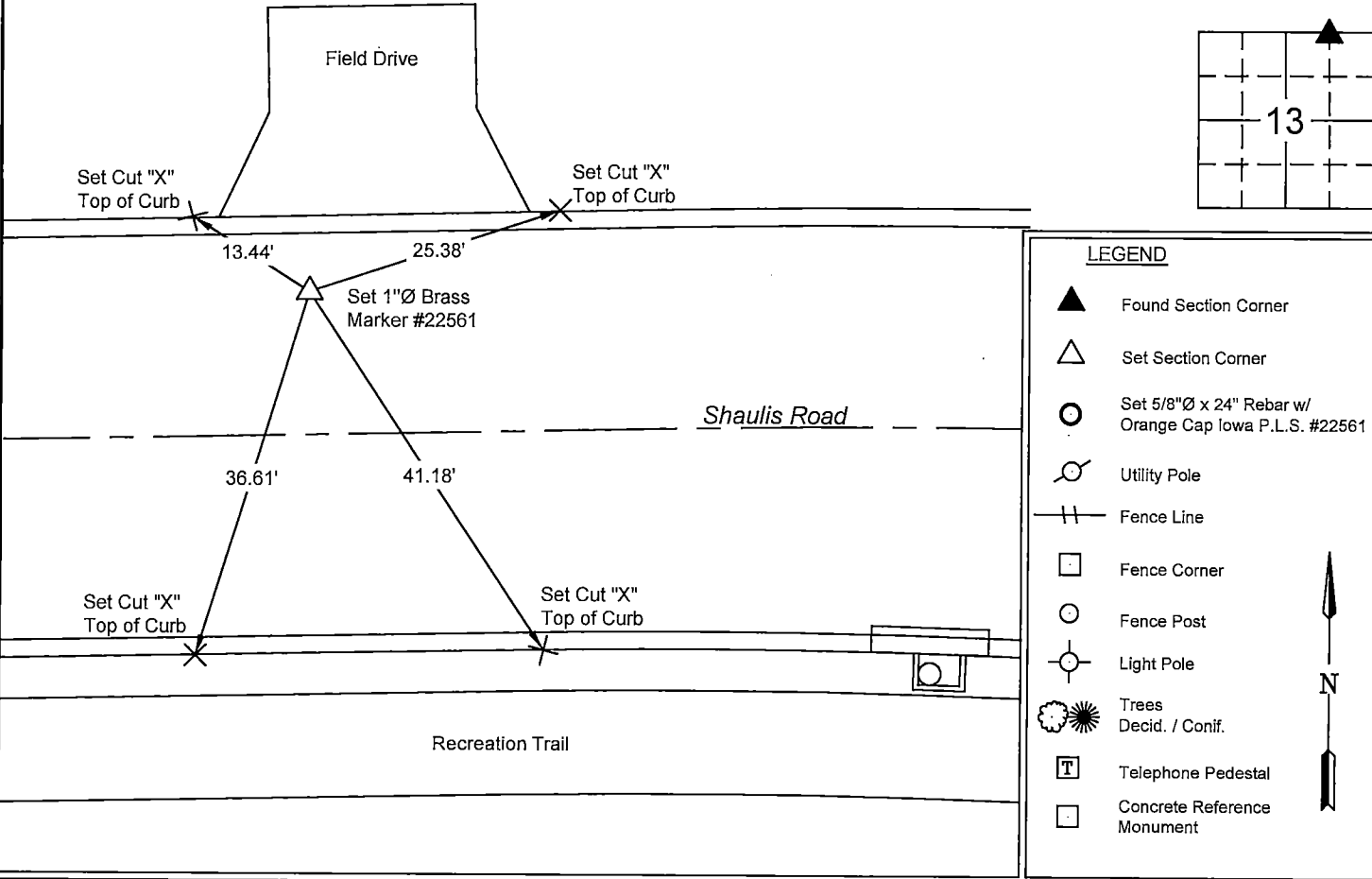
Land Survey Monuments situated in Section No. 13, Township No. 88 North,
Range No. 13 West, of the Fifth Principal Meridian, Black Hawk County, Iowa
Previously recorded in File No. 2020-00016955.

Show reason for preparing this certificate, the evidence and detailed procedures used in establishing the corner positions and monumentation found or placed.

Monument Description and Remarks: East 1/16 North Corner -- Section 13-T88N-R13W
Previous monument and reference ties obliterated by Shaulis Road reconstruction, City of Waterloo contract #1020.
Established corner equidistant between the North 1/4 corner and the Northeast corner and set a 1"Ø brass marker PLS #22561 flush with the
concrete pavement of Shaulis Road.
This corner certificate is being prepared due to a change in the monument of record and to update the reference ties.

PLAN - VIEW

(Show a minimum of three reference ties to durable physical objects, relevant monuments and physical conditions that will enable recovery of the corner.)



PROFESSORIAL LAND SURVEYOR

Matthew A. Kofta

22561

IOWA

I hereby certify that this land surveying document was prepared and the related survey work was performed by me or under my direct personal supervision and that I am a duly licensed Land Surveyor under the laws of the State of Iowa.

Matthew A. Kofta, P.L.S.

6-2-22

License Number 22561

My license renewal date is December 31, 2022

Pages or sheets covered by this seal: 1

List Corner to be Indexed

Corner	Section	Twp	Range
E1/16N	13	88N	13W
E1/16S	12	88N	13W

VJ Engineering

1501 Technology Parkway

Cedar Falls, Iowa - 319-266-5829

Section Corner

Reference Ties

file no.

218071

drawn by

MAK

date

6/2/22

26⁰⁰ VJK (7)