

Index Legend	
County:	Black Hawk
Section(s):	13 Township: 88 N Range: 13 W
Corner(s):	East 1/4 Corner
Requestor:	City of Waterloo
Proprietor:	City of Waterloo
Surveyor:	William W. Castle
Surveyor Company:	City of Waterloo Engineering Department 715 Mulberry Street, Waterloo, IA 50703
Return To:	715 Mulberry St, Waterloo, IA 50703 291-4312



Doc ID: 009880990001 Type: GEN
Recorded: 07/01/2020 at 10:35:04 AM
Fee Amt: \$7.00 Page 1 of 1
Black Hawk County Iowa
SANDIE L. SMITH RECORDER

File 2021-00000041

United States Public Land Survey Corner Certificate

Land Survey Monument situated in Section 13, Township 88 North, Range 13 West,
of the Fifth Principal Meridian, Black Hawk County, Iowa.

Previously recorded in File #2012-14403 in the Black Hawk County Recorder's Office.

Reason for preparing this certificate, the evidence and detailed procedures used in establishing the corner position, and monumentation found or placed.

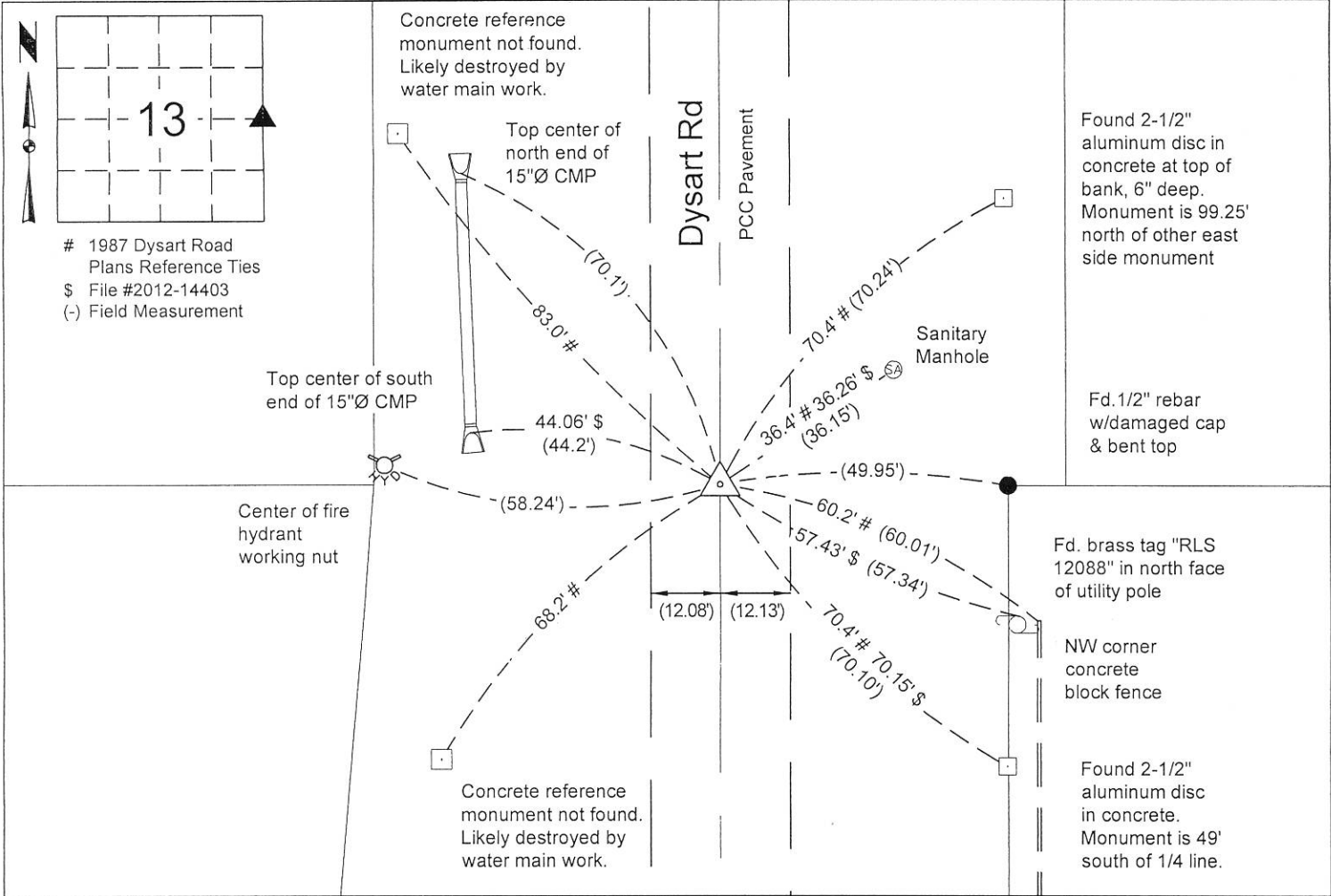
Existing pavement replaced as part of the City of Waterloo FY2019 Dysart Road & West 2nd Street Reconstruction Program, Contract No. 970.

Prior to construction, found 3" aluminum disc in concrete pavement placed as part of the FY1987 Dysart Road (Shaulis to Orange), Contract No. 320 road reconstruction project. Per as-built plans in City Engineer's office, aluminum disc in concrete replaced found iron pin in asphalt.

After construction, set 1/2" rebar, 8" long in hole drilled into PCC pavement.

PLAN VIEW

Show a minimum of three reference ties to durable physical objects, relevant monuments and physical conditions that will enable recovery of the corner.



I hereby certify that this surveying document was prepared and the related survey work was performed by me or under my direct personal supervision and that I am a duly licensed Land Surveyor under the laws of the State of Iowa.

William W. Castle 4/10/2020
William W. Castle, PLS Date
License Number 19715
My License Renewal Date is December 31, 2021.
Pages or sheets covered by this seal: 1/1

List corners to be indexed			
Corners	Section	Twp	Range
E 1/4	13	88	13

City of Waterloo Engineering Department
715 Mulberry Street, Waterloo, Iowa 50703
Phone: (319) 291-4312 Fax: (319) 291-4262

Drawn By: WWC Scale: 1" = 30'
Field Work Date: 4/6/20 & 5/12/20
Date Drawn: 5/12/2020

Sheet No.
1 of 1