



Doc ID: 009680350001 Type: GEN  
Recorded: 10/15/2019 at 02:29:59 PM  
Fee Amt: \$7.00 Page 1 of 1  
Black Hawk County Iowa  
SANDIE L. SMITH RECORDER

File 2020-00006948

\* WAYNE CLAASSEN ENGINEERING AND SURVEYING, INC.  
P.O. BOX 898 WATERLOO, IOWA 50704-0898

PHONE: (VOICE) 319-235-6294  
(FAX) 319-235-0028

UNITED STATES PUBLIC LAND SURVEY CORNER CERTIFICATE

Land Survey Monuments situated in Section 13, Township 88 North, Range 13 West, of the Fifth Principal Meridian, Black Hawk County, Iowa.

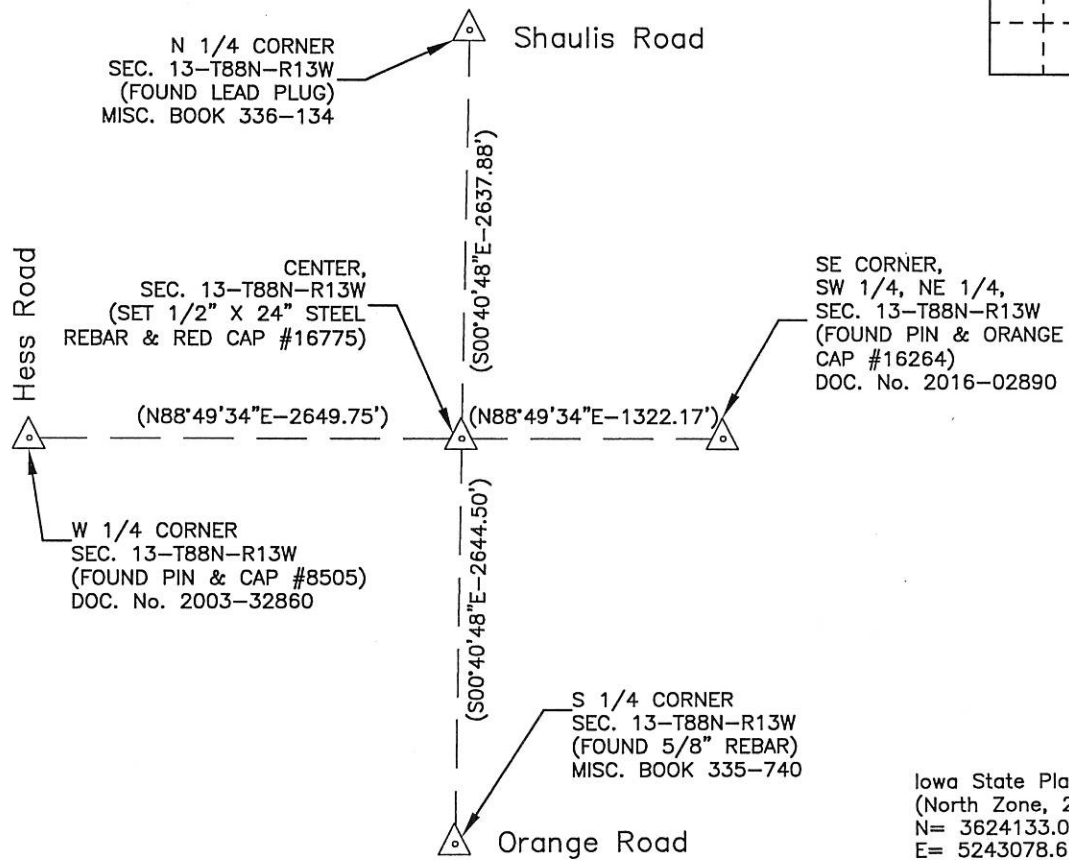
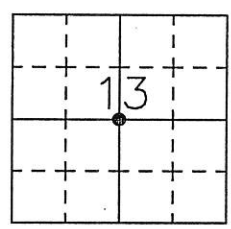
Previously recorded in (book, page, document number, etc.) in County Recorder's Office.

Monument Description and Remarks

Set 1/2" rebar & red cap #16775 at intersection of the line between the N 1/4 Corner and the S 1/4 Corner with the line between the W 1/4 Corner and the SE corner of the SW 1/4 of the NE 1/4 of this Section.

PLAN - VIEW

- Reason for filing certificate:
- ☒ There is no certificate on file with the Recorder's Office.
  - ☐ Accepts corner position which differs from the one shown in above document.
  - ☐ The corner monument was replaced or modified.
  - ☐ The reference ties in above document were incorrect or missing.



Iowa State Plane Coordinate System  
(North Zone, 2011 Adj.)  
N= 3624133.0  
E= 5243078.6  
(For reference only)

769-6

I hereby certify that this land surveying document was prepared and the related survey work was performed by me or under my direct personal supervision and that I am a duly Licensed Land Surveyor under the laws of the State of Iowa.

Signature: David L. Schell  
David L. Schell, L.S.

Date: Oct. 10, 2019 Lic. No. 16775

Pages or Sheets Covered by this Seal: THIS SHEET ONLY.

My license renewal date is December 31, 2020

SEAL

List Corners to be Indexed

Corners	Section	Twp	Range
CENTER,	13	88 N	13 W

