

2025-18192

RECORDED: 12/10/2025 04:13:08 PM

RECORDING FEE: \$7.00

REVENUE TAX: \$

COMBINED FEE: \$7.00

SANDIE L. SMITH, RECORDER
BLACK HAWK COUNTY, IOWA

Michael R. Fagle P.L.S.

AECOM, 501 Sycamore St., Suite 222 Waterloo, Iowa 50703

UNITED STATES PUBLIC LAND SURVEY CORNER CERTIFICATE

OF

LAND SURVEY MONUMENTS SITUATED IN SECTION NO. 12, TOWNSHIP NO. 88 NORTH, RANGE NO. 13 WEST, OF THE FIFTH PRINCIPAL MERIDIAN, BLACK HAWK COUNTY, IOWA.
PREVIOUSLY RECORDED IN BOOK 333 ON PAGE 020 IN THE OFFICE OF THE COUNTY RECORDER.

(SHOW REASON FOR PREPARING THIS CERTIFICATE, THE EVIDENCE AND DETAILED PROCEDURES USED IN ESTABLISHING THE CORNER POSITIONS AND MONUMENTATION FOUND OR PLACED.)

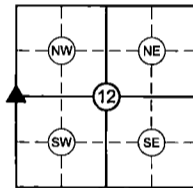
MONUMENT DESCRIPTION AND REMARKS: W 1/4 CORNER SECTION 12-88-13W

FOUND 2" ALUM. IDOT CAP. THE CAP WAS REMOVED DURING THE RECONSTRUCTION OF LAPORTE ROAD.
AFTER THE RECONSTRUCTION WAS COMPLETED, SET 24" X 1/2" REBAR WITH YELLOW PLASTIC CAP NO.
8505 - 6" BELOW EXISTING GRADE

PLAN - VIEW

(SHOW A MINIMUM OF THREE REFERENCE TIES TO DURABLE PHYSICAL OBJECTS, RELEVANT MONUMENTS AND PHYSICAL CONDITIONS THAT WILL ENABLE RECOVERY OF THE CORNER.)

NOT TO SCALE



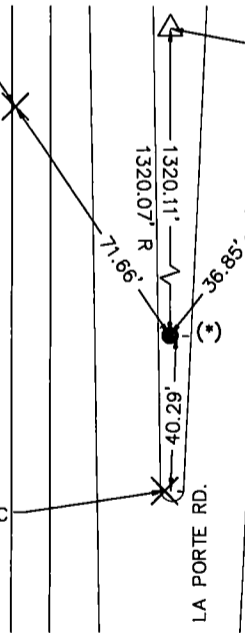
(*) SET 24" x 1/2" REBAR
W/ YELLOW PLASTIC CAP
#8505-6" BELOW
EXISTING GRADE

"X" CUT IN WEST SIDE TRAIL
WEST OF LA PORTE RD.

NW COR. SW 1/4 NW 1/4
SEC. 12-88-13W
3"x1/4" SURVEY MARKER
W/1" DIA. HEAD

"X" CUT IN BOC
@ EAST SIDE OF LAPORTE RD.

"X" CUT IN MEDIAN BOC



NOTE: ALL DISTANCES
WERE PLUMBED.

I HEREBY CERTIFY THAT THIS LAND SURVEYING DOCUMENT WAS PREPARED AND THE RELATED SURVEY WORK WAS PERFORMED BY ME OR UNDER MY DIRECT PERSONAL SUPERVISION AND THAT I AM A DULY LICENSED LAND SURVEYOR UNDER THE LAWS OF THE STATE OF IOWA.

SIGNED: *Michael R. Fagle*

DATE: 12-10-2025
SEAL



MY LICENSE RENEWAL DATE IS DECEMBER 31, 2026
PAGES OR SHEETS COVERED BY THIS SEAL: THIS PAGE ONLY

LIST CORNERS TO BE INDEXED

CORNER	SECTION	TWP	RANGE
W 1/4 CORNER	12	88	13
E 1/4 CORNER	11	88	13

DRAWN BY: EAN

CHECKED BY: