

2025-18191

RECORDED: 12/10/2025 04:13:07 PM

RECORDING FEE: \$7.00

REVENUE TAX: \$

COMBINED FEE: \$7.00

SANDIE L. SMITH, RECORDER  
BLACK HAWK COUNTY, IOWA

Michael R. Fagle P.L.S.

AECOM, 501 Sycamore St., Suite 222 Waterloo, Iowa 50703

# UNITED STATES PUBLIC LAND SURVEY CORNER CERTIFICATE

## OF

LAND SURVEY MONUMENTS SITUATED IN SECTION NO. 12, TOWNSHIP NO. 88 NORTH, RANGE NO. 13 WEST, OF THE FIFTH PRINCIPAL MERIDIAN, BLACK HAWK COUNTY, IOWA. PREVIOUSLY RECORDED IN FILE 2013-00013208 IN THE OFFICE OF THE COUNTY RECORDER.

(SHOW REASON FOR PREPARING THIS CERTIFICATE, THE EVIDENCE AND DETAILED PROCEDURES USED IN ESTABLISHING THE CORNER POSITIONS AND MONUMENTATION FOUND OR PLACED.)

MONUMENT DESCRIPTION AND REMARKS: SW CORNER NW 1/4 NW 1/4 OF SECTION 12-88-13.

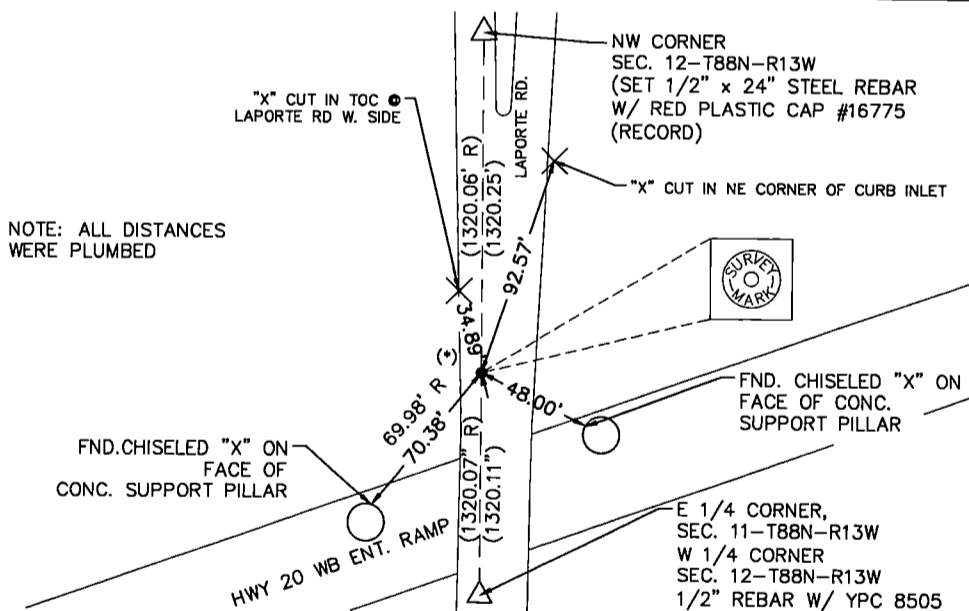
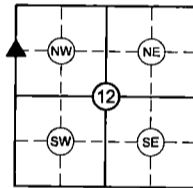
THE PREVIOUS CORNER WAS A CUT "X" THAT WAS REMOVED DURING THE RECONSTRUCTION OF LAPORTE ROAD. RESET A 3" X 1/4" SURVEY MARK THAT HAS 1" DOMED HEAD, RECESSED 1/4" BELOW THE SURFACE OF LAPORTE RD.

## PLAN - VIEW

(SHOW A MINIMUM OF THREE REFERENCE TIES TO DURABLE PHYSICAL OBJECTS, RELEVANT MONUMENTS AND PHYSICAL CONDITIONS THAT WILL ENABLE RECOVERY OF THE CORNER.)

NOT TO SCALE

(\*) SET 3" x 1/4" SURVEY MARKER W/ 1" DOMED HEAD



I HEREBY CERTIFY THAT THIS LAND SURVEYING DOCUMENT WAS PREPARED AND THE RELATED SURVEY WORK WAS PERFORMED BY ME OR UNDER MY DIRECT PERSONAL SUPERVISION AND THAT I AM A DULY LICENSED LAND SURVEYOR UNDER THE LAWS OF THE STATE OF IOWA.

SIGNED: *Michael R. Fagle*

DATE: 12-10-2025

SEAL



MY LICENSE RENEWAL DATE IS DECEMBER 31, 2026.  
PAGES OR SHEETS COVERED BY THIS SEAL: THIS PAGE ONLY

### LIST CORNERS TO BE INDEXED

CORNER	SECTION	TWP	RANGE
SW CORNER	12	88	13
NW 1/4 NW 1/4			
SE CORNER	11	88	13
NE 1/4 NE 1/4			

DRAWN BY: EAN

CHECKED BY: