



Doc ID: 010469440001 Type: GEN  
Recorded: 06/03/2022 at 01:30:53 PM  
Fee Amt: \$7.00 Page 1 of 1  
Black Hawk County Iowa  
SANDIE L. SMITH RECORDER

File 2022-00023459

Prepared By: Matthew A. Kofta, P.L.S., VJ Engineering, 1501 Technology Parkway, Suite 100, Cedar Falls, Iowa, 50613, (319) 266-5829  
Return To: Matthew A. Kofta, P.L.S., VJ Engineering, 1501 Technology Parkway, Suite 100, Cedar Falls, Iowa, 50613, (319) 266-5829

United States Public Land Survey Corner Certificate of

Land Survey Monuments situated in Section No. 12, Township No. 88 North, Range No. 13 West, of the Fifth Principal Meridian, Black Hawk County, Iowa  
Previously recorded in Fee Bk. #2004-11972

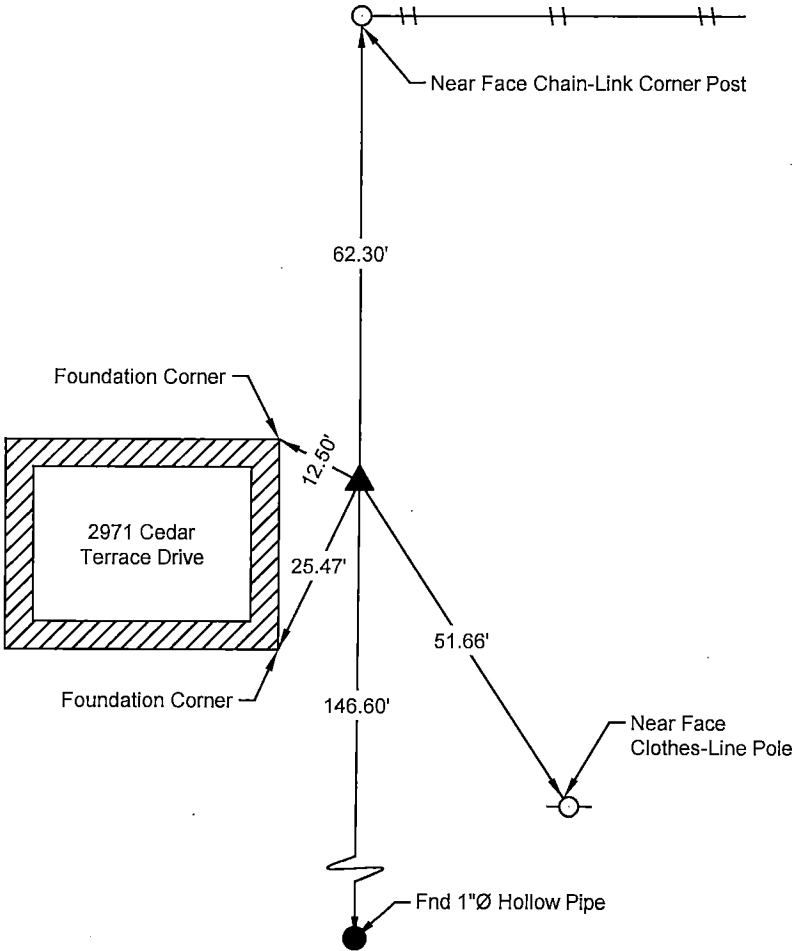
Show reason for preparing this certificate, the evidence and detailed procedures used in establishing the corner positions and monumentation found or placed.

Monument Description and Remarks: East 1/4 Corner -- Section 12 - T88N - R13W

Previous corner certificate calls out a Concrete Monument with Brass Cap at the Corner.  
Searched area and found a Concrete Monument with Brass Cap stamped "12+7", three inches deep. Used found monument as the corner.  
This corner certificate is being prepared to update the reference ties.

PLAN - VIEW

(Show a minimum of three reference ties to durable physical objects, relevant monuments and physical conditions that will enable recovery of the corner.)



LEGEND

- Found Section Corner
- Set Section Corner
- Set 5/8"Ø x 24" Rebar w/ Orange Cap Iowa P.L.S. #22561
- Utility Pole
- Fence Line
- Fence Corner
- Fence Post
- Light Pole
- Trees Decid. / Conif.
- Telephone Pedestal
- Concrete Reference Monument



I hereby certify that this land surveying document was prepared and the related survey work was performed by me or under my direct personal supervision and that I am a duly licensed Land Surveyor under the laws of the State of Iowa.

Matthew A. Kofta, P.L.S.  
License Number 22561  
My license renewal date is December 31, 2022  
Pages or sheets covered by this seal: 1

List Corner to be Indexed

Corner	Section	Twp	Range
East 1/4	12	88N	13W
West 1/4	7	88N	12W



VJ Engineering  
1501 Technology Parkway  
Cedar Falls, Iowa - 319-266-5829

Section Corner  
Reference Ties

file no.  
228019  
drawn by  
MAK  
date  
03/17/22