

PHONE: (VOICE) 319-235-6294  
(FAX) 319-235-0028

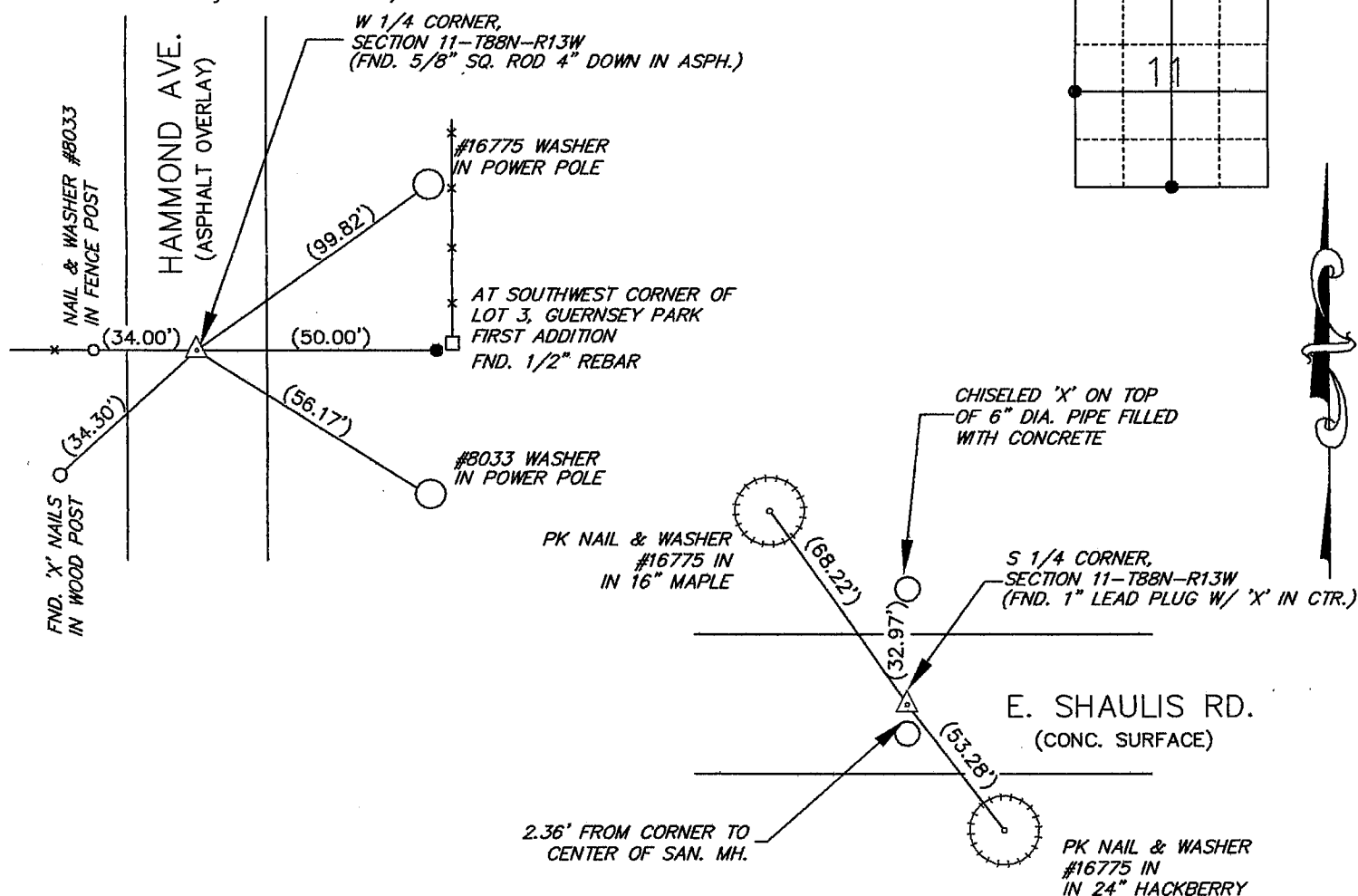
Land Survey Monuments situated in Section 11, Township 88 North, Range 13 West, of the Fifth Principal Meridian, Black Hawk County County, Iowa. Previously recorded in N/A in County Recorder's Office.  
(book, page, document number, etc.)

(Show reason for preparing this certificate, the evidence and detailed procedures used in establishing the corner positions and monumentation found or placed.)

Monument Description and Remarks S 1/4 Corner: No corner certificate on file. Found 1" lead plug with 'X'  
in the center as per ties from Guernseys Orange View Plat.

W 1/4 Corner: No corner certificate on file. Found 5/8" square rod 4" deep in asphalt road as per Final Plat  
Guernsey Park.

(Show a minimum of three reference ties to durable physical objects, relevant monuments and physical conditions that will enable recovery of the corner.)



BK 620, PG. 20 &amp; 21

I hereby certify that this land surveying document was prepared and the related survey work was performed by me or under my direct personal supervision and that I am a duly Licensed Land Surveyor under the laws of the State of Iowa.

Signature: \_\_\_\_\_  
David L. Scheil, L.S.

Date: MAY 09, 2006 Lic. No. 16775

Pages or Sheets Covered by this Seal: THIS SHEET ONLY.

**My license renewal date is December 31, 2006**

SEAL

## List Corners to be Indexed

Corners	Section	Twp	Range
S 1/4 CORNER,	11	88 N	13 W
W 1/4 CORNER,	11	88 N	13 W

