

## UNITED STATES PUBLIC LAND SURVEY CORNER CERTIFICATE

Land Survey Monuments situated in Section 11, Township 88 North, Range 13 West, of the Fifth Principal Meridian, Black Hawk County County, Iowa.

Previously recorded in Misc. Bk. 330, Pg. 20 (Center) in County Recorder's Office.  
(book, page, document number, etc.)

(Show reason for preparing this certificate, the evidence and detailed procedures used in establishing the corner positions and monumentation found or placed.)

Monument Description and Remarks NW Corner, NE 1/4, SW 1/4: No corner certificate on file. Found 5/8" rebar as per Final PLat Guernsey Park Second Addition.

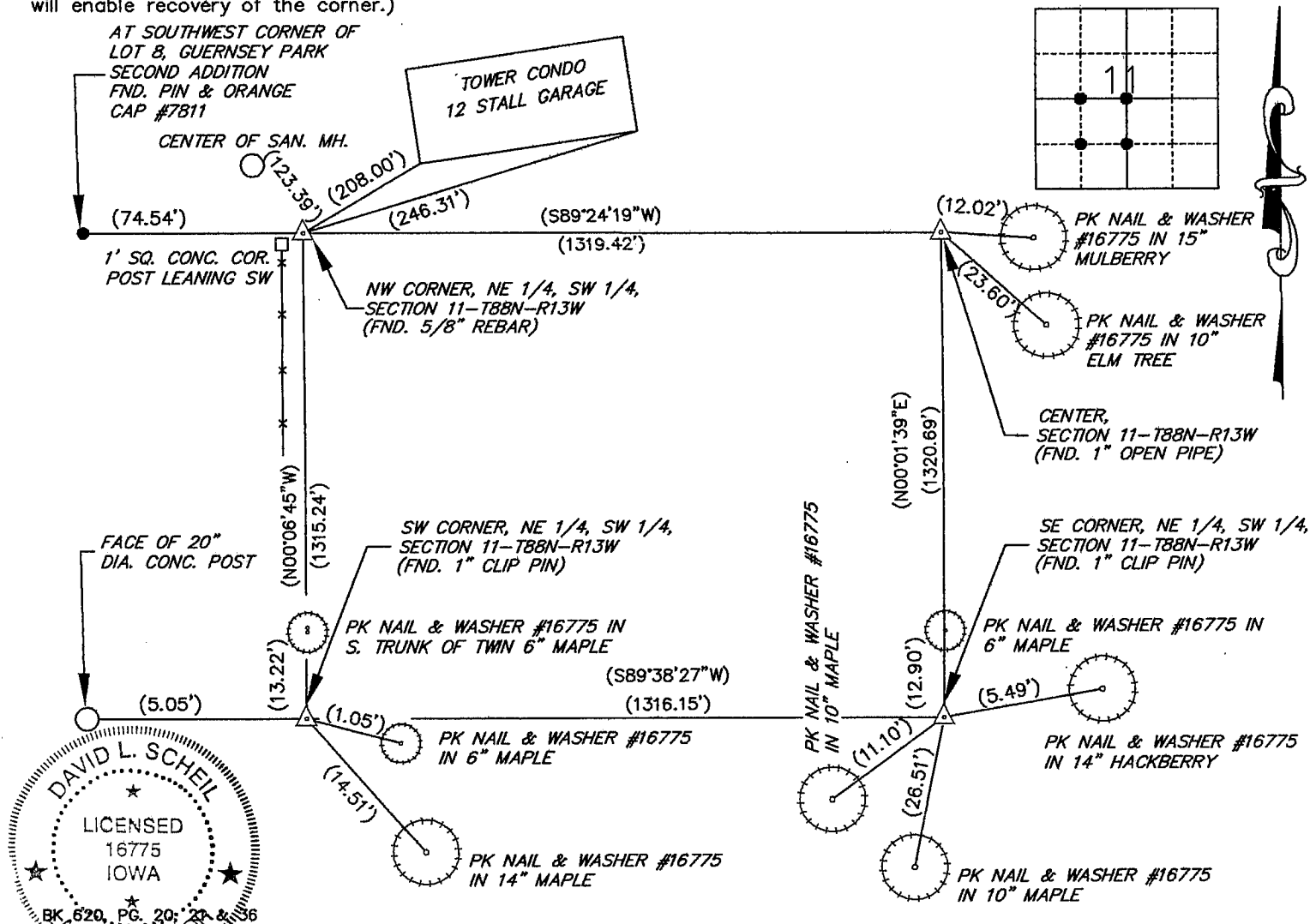
SW Corner, NE 1/4, SW 1/4: No corner certificate on file. Found 1" clip pin as per Guernsey's Second Orange View Plat.

SE Corner, NE 1/4, SW 1/4: No corner certificate on file. Found 1" clip pin as per Guernsey's Second Orange View Plat.

Center: Found 1" open pipe as per Misc. Bk. 333-20. Re-tied corner because previous ties were missing.

### PLAN - VIEW

(Show a minimum of three reference ties to durable physical objects, relevant monuments and physical conditions that will enable recovery of the corner.)



I hereby certify that this land surveying document was prepared and the related survey work was performed by me or under my direct personal supervision and that I am a duly Licensed Land Surveyor under the laws of the State of Iowa.

Signature: David L. Scheil  
David L. Scheil, L.S.

Date: MAY 09, 2006 Lic. No. 16775

Pages or Sheets Covered by this Seal: THIS SHEET ONLY.

My license renewal date is December 31, 2006

SEAL

#### List Corners to be Indexed

| Corners                    | Section | Twp  | Range |
|----------------------------|---------|------|-------|
| NW CORNER, NE 1/4, SW 1/4, | 11      | 88 N | 13 W  |
| SW CORNER, NE 1/4, SW 1/4, | 11      | 88 N | 13 W  |
| SE CORNER, NE 1/4, SW 1/4, | 11      | 88 N | 13 W  |
| CENTER,                    | 11      | 88 N | 13 W  |