

Doc ID: 005621510001 Type: GEN  
Recorded: 11/17/2014 at 02:19:55 PM  
Fee Amt: \$7.00 Page 1 of 1  
Black Hawk County Iowa  
JUDITH A MCCARTHY RECORDER  
File **2015-00008428**

REC FEE 5.00  
E FEE 2.00  
TRAN FEE \_\_\_\_\_  
REV FEE \_\_\_\_\_  
GF \_\_\_\_\_

Michael R. Fagle, L.S. \* AECOM, 501 Sycamore St., Suite 222, Waterloo, Iowa 50703 1-319-232-6531

UNITED STATES PUBLIC LAND SURVEY CORNER CERTIFICATE  
OF

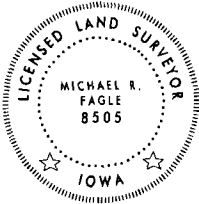
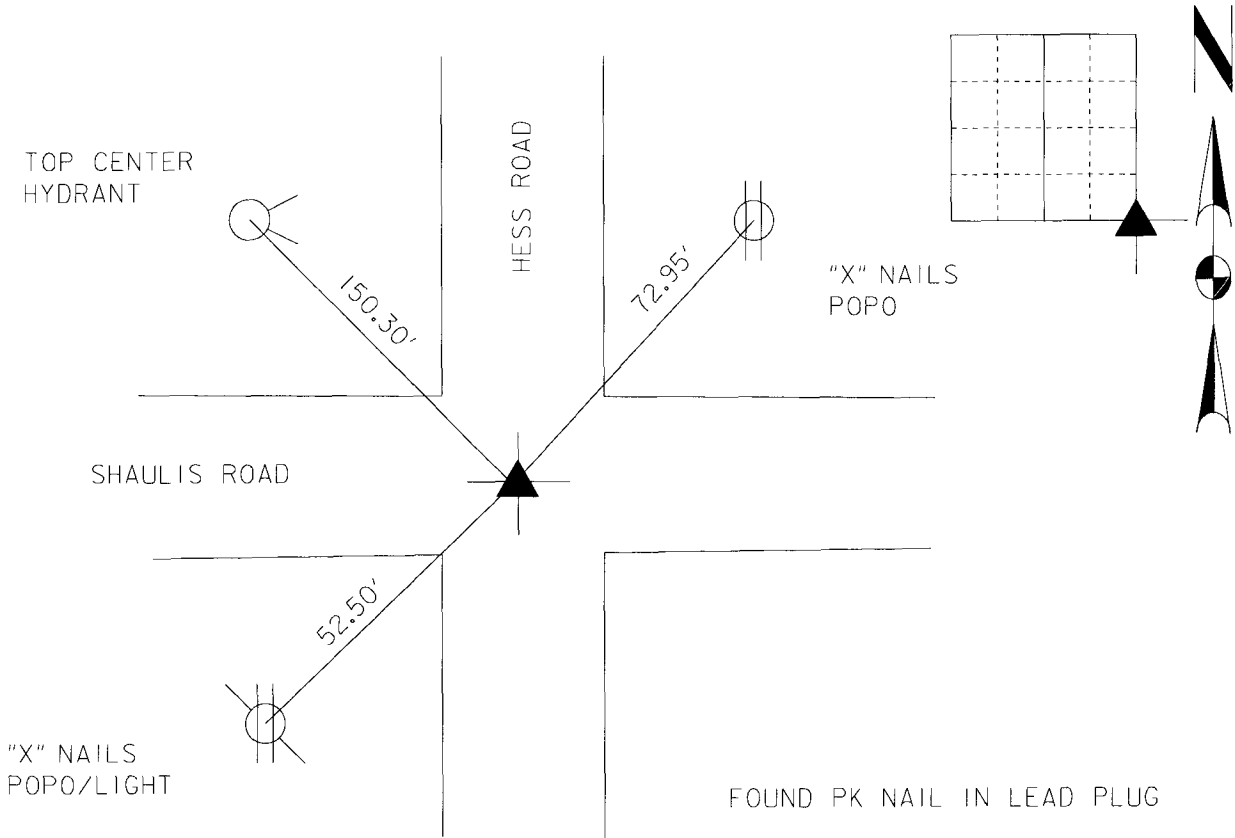
Land Survey Monuments situated in Section 11, Township 88 North,  
Range 13 West, of the Fifth Principal Meridian, BLACK HAWK  
County, Iowa. Previously recorded in Book 333, Page 020  
in County Recorder's Office. (Book, Page, Document Number, etc.)

(Show reason for preparing this certificate, the evidence and detailed procedures used in establishing the corner positions and monumentation found or placed.)

Monument Description and Remarks: Found PK Nail in Lead Plug from previous ties.

PLAN - VIEW

(Show a minimum of three reference ties to durable physical objects, relevant monuments and physical conditions that will enable recovery of the corner.)



I hereby certify that this Land Surveying document was prepared by me or under my direct personal supervision and that I am a duly Licensed Land Surveyor under the laws of the State of Iowa.  
Michael R. Fagle 11-17-2014  
MICHAEL R. FAGLE Date  
License number 8505  
My license renewal date is December 31, 2014  
Pages or sheets covered by this seal:  
THIS SHEET

List Corners to be Indexed			
Corners	Section	Twp	Range
SOUTHEAST CORNER	11	T 88 N	R 13 W