

Env

WAYNE CLAASSEN ENGINEERING AND SURVEYING, INC.
P.O. BOX 898 WATERLOO, IOWA 50704-0898

PHONE: (VOICE) 319-235-6294
(FAX) 319-235-0028

UNITED STATES PUBLIC LAND SURVEY CORNER CERTIFICATE

Land Survey Monuments situated in Section 11, Township 88 North, Range 13 West, of the Fifth Principal Meridian, Black Hawk County, Iowa.

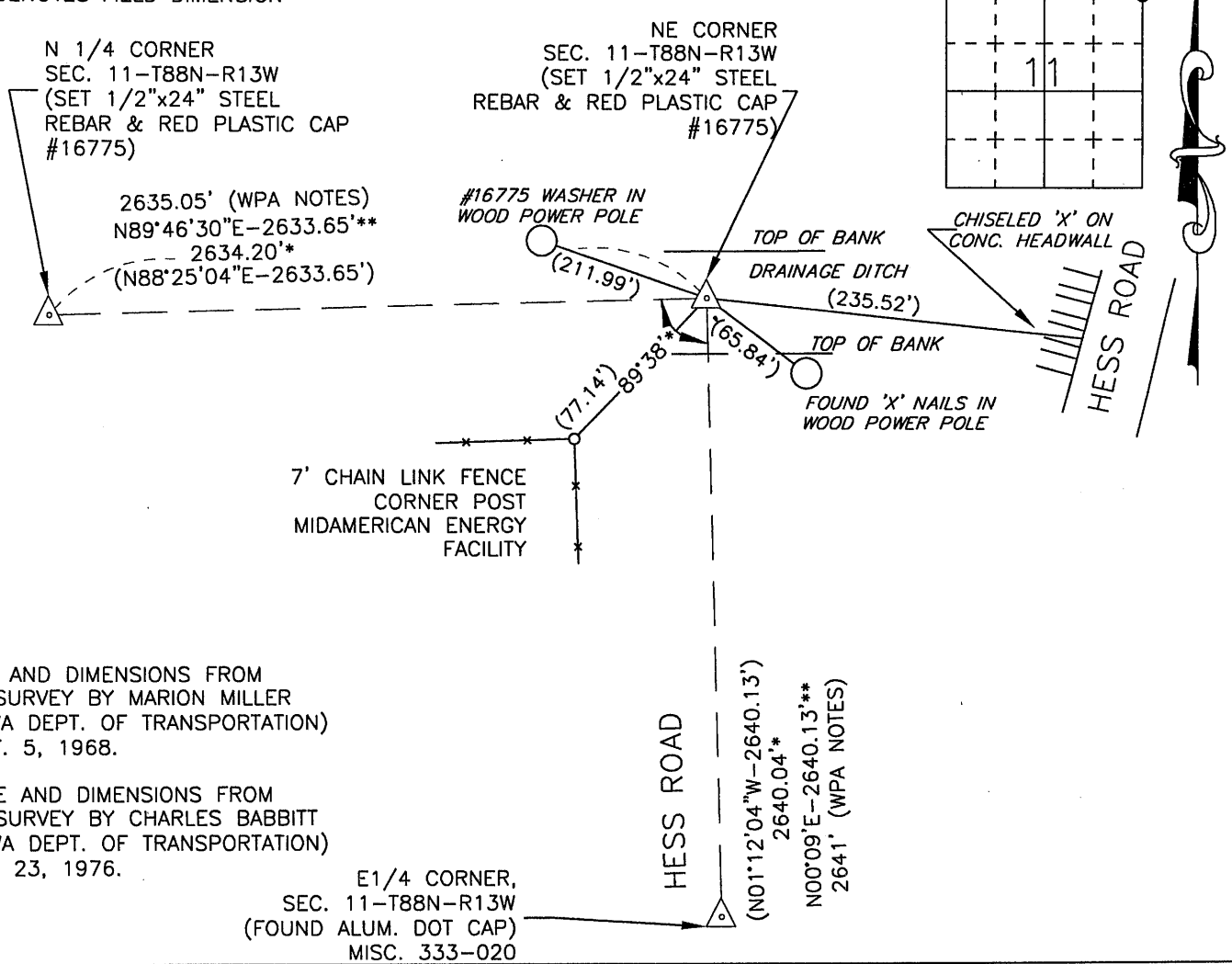
Previously recorded in _____ in County Recorder's Office.
(book, page, document number, etc.)

Monument Description and Remarks

WPA notes from Black Hawk County Engineer's Office, dated June 11, 1940 state the following: "At location indicated by random line dug hole 4' sq 18" deep found old oak hub 2"x2"x17". Lowered all evidence in place and set c.m. on top." IDOT Land Corner Survey dated Sept. 5, 1968, notes "found broken conc. monu.". IDOT Land Corner Surveys dated July 9, 1971, dated July 15, 1971, and dated July 26, 1971, notes "found 5/8" x 15" rein. rod above broken conc. monument". DOT Land Corner Survey dated December 23, 1976 also notes "found 5/8" x 15" rein. rod above broken conc. monument". Drainage Ditch was constructed in 1992 and destroyed corner. Reset corner using IDOT data from December 1976. This certificate was filed because there is no certificate on file.

00.00 DENOTES RECORD DIMENSION
(00.00) DENOTES FIELD DIMENSION

PLAN - VIEW



* DISTANCE AND DIMENSIONS FROM
LAND&LOT SURVEY BY MARION MILLER
#3960 (IOWA DEPT. OF TRANSPORTATION)
DATED SEPT. 5, 1968.

** DISTANCE AND DIMENSIONS FROM
LAND&LOT SURVEY BY CHARLES BABBITT
#3513 (IOWA DEPT. OF TRANSPORTATION)
DATED DEC. 23, 1976.

E 1/4 CORNER,
SEC. 11-T88N-R13W
(FOUND ALUM. DOT CAP)
MISC. 333-020

BK 710-13

I hereby certify that this land surveying document was prepared and the related survey work was performed by me or under my direct personal supervision and that I am a duly Licensed Land Surveyor under the laws of the State of Iowa.

Signature: David L. Scheil
David L. Scheil, L.S.

Date: DEC 18, 2012 Lic. No. 16775

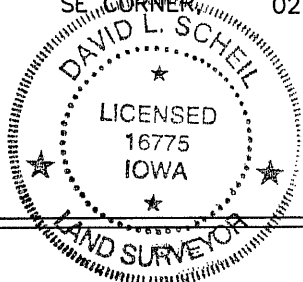
Pages or Sheets Covered by this Seal: THIS SHEET ONLY.

My license renewal date is December 31, 2012

SEAL

List Corners to be Indexed

Corners	Section	Twp	Range
NE CORNER,	11	88 N	13 W
NW CORNER,	12	88 N	13 W
SW CORNER,	01	88 N	13 W
SE CORNER,	02	88 N	13 W



(1.00)