

I DW
P
Z

Document Number: 2008003825

Date: Aug 15, 2007 4:30:00 pm

Aud Fee: 0.00 Rec Fee: 5.00

Trans Tax: 0.00 Rec Management Fee: 1.00

E-Com Fee: 1.00 Non-Standard Page Fee: 0.00

Filed for record in Black Hawk County, Iowa
Judith A. McCarthy, County Recorder

Paul H. Helland, 1107 Technology Parkway, Cedar Falls, Iowa 50613-6951, (319)-266-0161

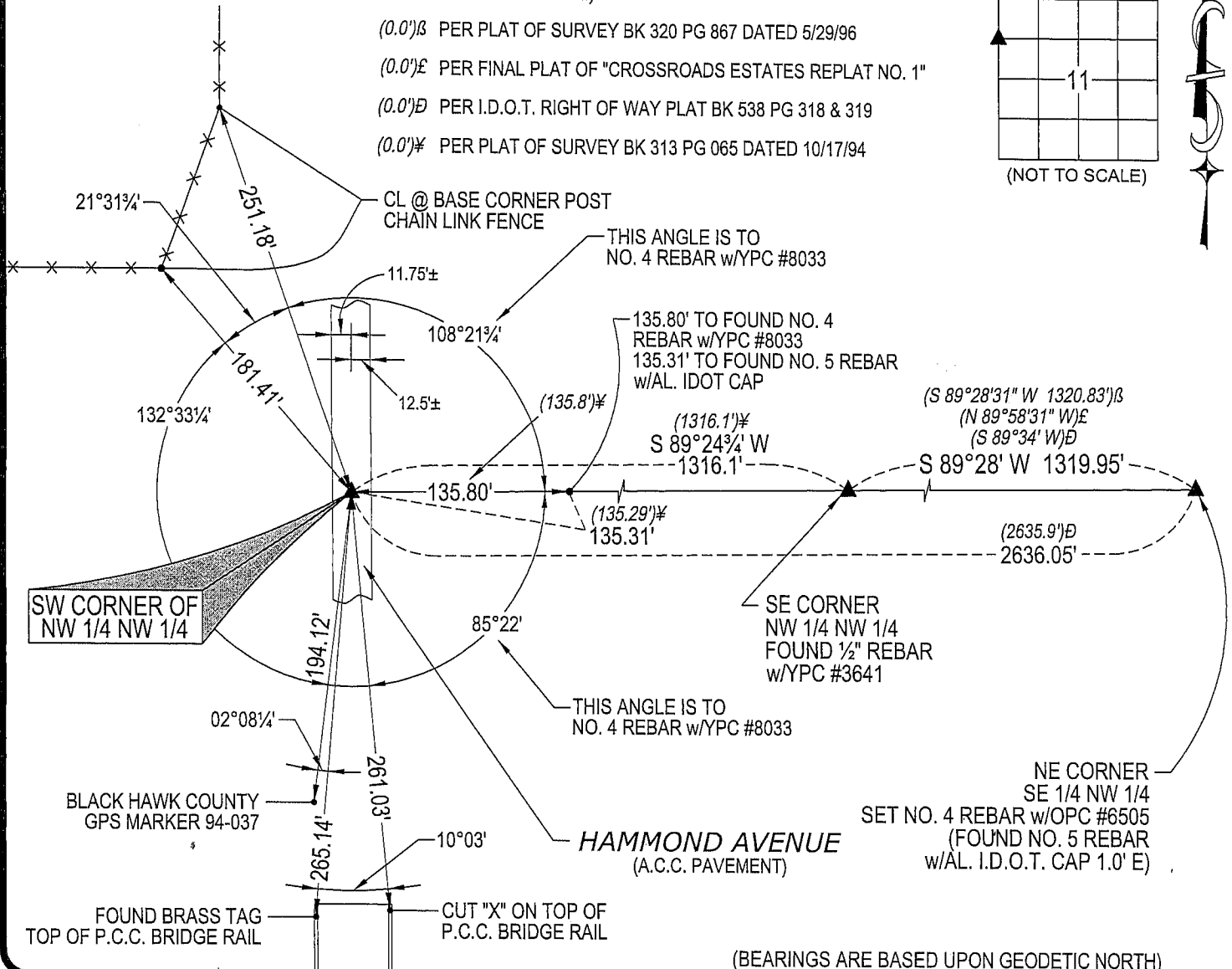
UNITED STATES PUBLIC LAND SURVEY CORNER CERTIFICATE
OFLAND SURVEY MONUMENTS SITUATED IN SECTION NO. 11, TOWNSHIP NO. 88 NORTH, RANGE
NO. 13 WEST OF THE FIFTH PRINCIPAL MERIDIAN, BLACK HAWK COUNTY, IOWA.PREVIOUSLY RECORDED IN N/A(SHOW REASON FOR PREPARING THIS CERTIFICATE, THE EVIDENCE AND DETAILED PROCEDURES USED IN ESTABLISHING THE
CORNER POSITIONS AND MONUMENTATION FOUND OR PLACED.)

MONUMENT DESCRIPTION AND REMARKS:

NO USPLSCC ON FILE. SURVEY COMPLETED IN THE NW 1/4 & NE 1/4 OF SEC. 11-T88N-R13W.

→ **SW CORNER NW 1/4 NW 1/4:** NO BLACK HAWK COUNTY ENGINEER REFERENCE TIES AVAILABLE. CORNER
STONE SURVEY (FOR I.D.O.T.) DATED 12/23/79 CALLS FOR [FOUND PINCHED PIPE 6" DEEP]. ALL TIES FROM
SAID CORNER STONE SURVEY OBLITERATED. PLAT OF SURVEY BY F.W. KING DATED 10/17/1994 CALLS FOR
[FOUND D.O.T. ALUM. MON. IN PAVING]. FOUND 3/4" SQUARE ROD 0.25' DEEP IN A.C.C. PAVEMENT. THIS
POSITION CORRESPONDS WITHIN REASON TO SAID PLAT OF SURVEY AND DISTANCE FROM APPROX. W 1/4
CORNER AND FROM SE CORNER NE 1/4 NW 1/4. UTILIZED SAID ROD AS CORNER.

PLAN VIEW

(SHOW A MINIMUM OF THREE REFERENCE TIES TO DURABLE PHYSICAL OBJECTS, RELEVANT MONUMENTS AND PHYSICAL
CONDITIONS THAT WILL ENABLE RECOVERY OF THE CORNER.)

(BEARINGS ARE BASED UPON GEODETIC NORTH)

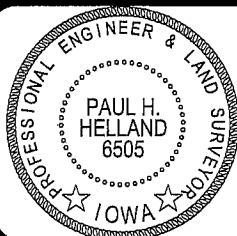


HELLAND ENGINEERING & SURVEYING, LTD.

1107 Technology Parkway
Cedar Falls, Iowa 50613-6951
(319)-266-0161SHINER = 8D NAIL & 1 5/16"Ø METAL SHINER
BRASS TAG = 13/16"Ø BRASS TAG
OPC = PLASTIC CAP (O=ORANGE, R=RED, Y=YELLOW)
(00') RECORDED AS FILE NAME: 07-161C2.DWG

LIST CORNERS TO BE INDEXED

CORNER SECTION TOWNSHIP RANGE

SW CORNER 11 88N 13W
NW 1/4 NW 1/4I hereby certify that this land surveying document was prepared
and the related survey work was performed by me or under my
direct personal supervision and that I am a duly licensed Land
Surveyor under the laws of the State of Iowa.Paul H. Helland
License Number 6505
My license renewal date is December 31, 2007.
All pages or sheets are covered by this seal except:

Rec