



Doc ID: 005013130001 Type: GEN
Kind: CORNER
Recorded: 12/27/2012 at 08:49:59 AM
Fee Amt: \$7.00 Page 1 of 1
Black Hawk County Iowa
JUDITH A MCCARTHY RECORDER

File 2013-00013205

Env

WAYNE CLAASSEN ENGINEERING AND SURVEYING, INC.
P.O. BOX 898 WATERLOO, IOWA 50704-0898

PHONE: (VOICE) 319-235-6294
(FAX) 319-235-0028

UNITED STATES PUBLIC LAND SURVEY CORNER CERTIFICATE

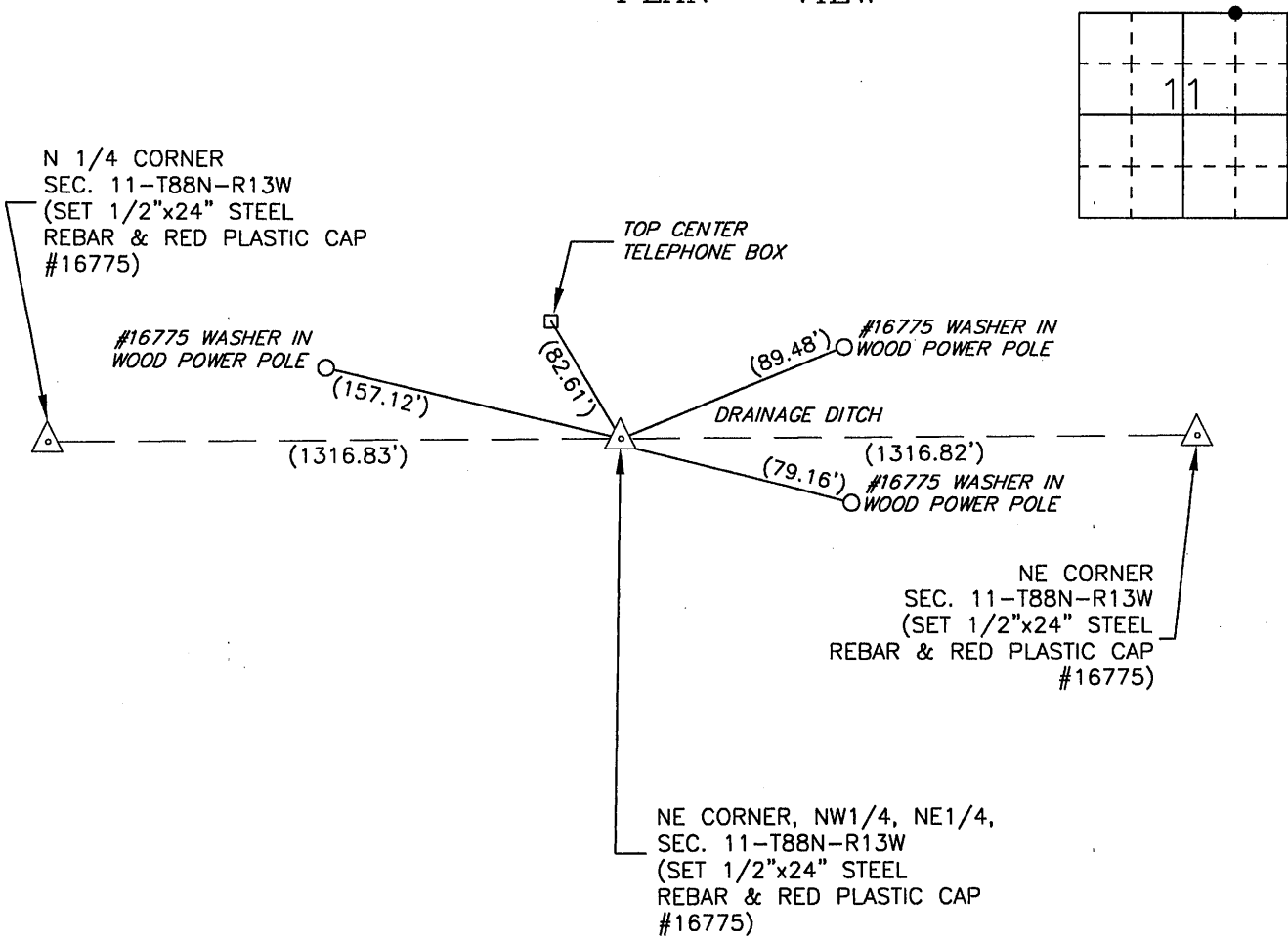
Land Survey Monuments situated in Section 11, Township 88 North, Range 13 West, of the Fifth Principal Meridian, Black Hawk County, Iowa.

Previously recorded in _____ in County Recorder's Office.
(book, page, document number, etc.)

Monument Description and Remarks

Set 1/2"x24" steel rebar & red plastic cap #16775 at midpoint between Northeast corner of Section 11 and North 1/4 corner of Section 11. This certificate was filed because there is no certificate on file.

PLAN - VIEW



BK 710-13

I hereby certify that this land surveying document was prepared and the related survey work was performed by me or under my direct personal supervision and that I am a duly Licensed Land Surveyor under the laws of the State of Iowa.

Signature: _____

David L. Scheil, L.S.

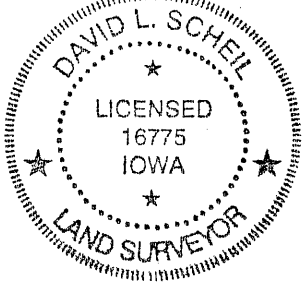
Date: DEC. 18, 2012 Lic. No. 16775

Pages or Sheets Covered by this Seal: THIS SHEET ONLY.

My license renewal date is December 31, 2012

List Corners to be Indexed

Corners	Section	Twp	Range
NE CORNER, NW1/4, NE 1/4	11	88 N	13 W



SEAL

28.00
(7.00)