



Doc ID: 006790550001 Type: GEN  
Recorded: 06/22/2015 at 09:39:28 AM  
Fee Amt: \$7.00 Page 1 of 1  
Black Hawk County Iowa  
SANDIE L. SMITH RECORDER

File 2015-00020885

WAYNE CLAASSEN ENGINEERING AND SURVEYING, INC.  
P.O. BOX 898 WATERLOO, IOWA 50704-0898

PHONE: (VOICE) 319-235-6294  
(FAX) 319-235-0028

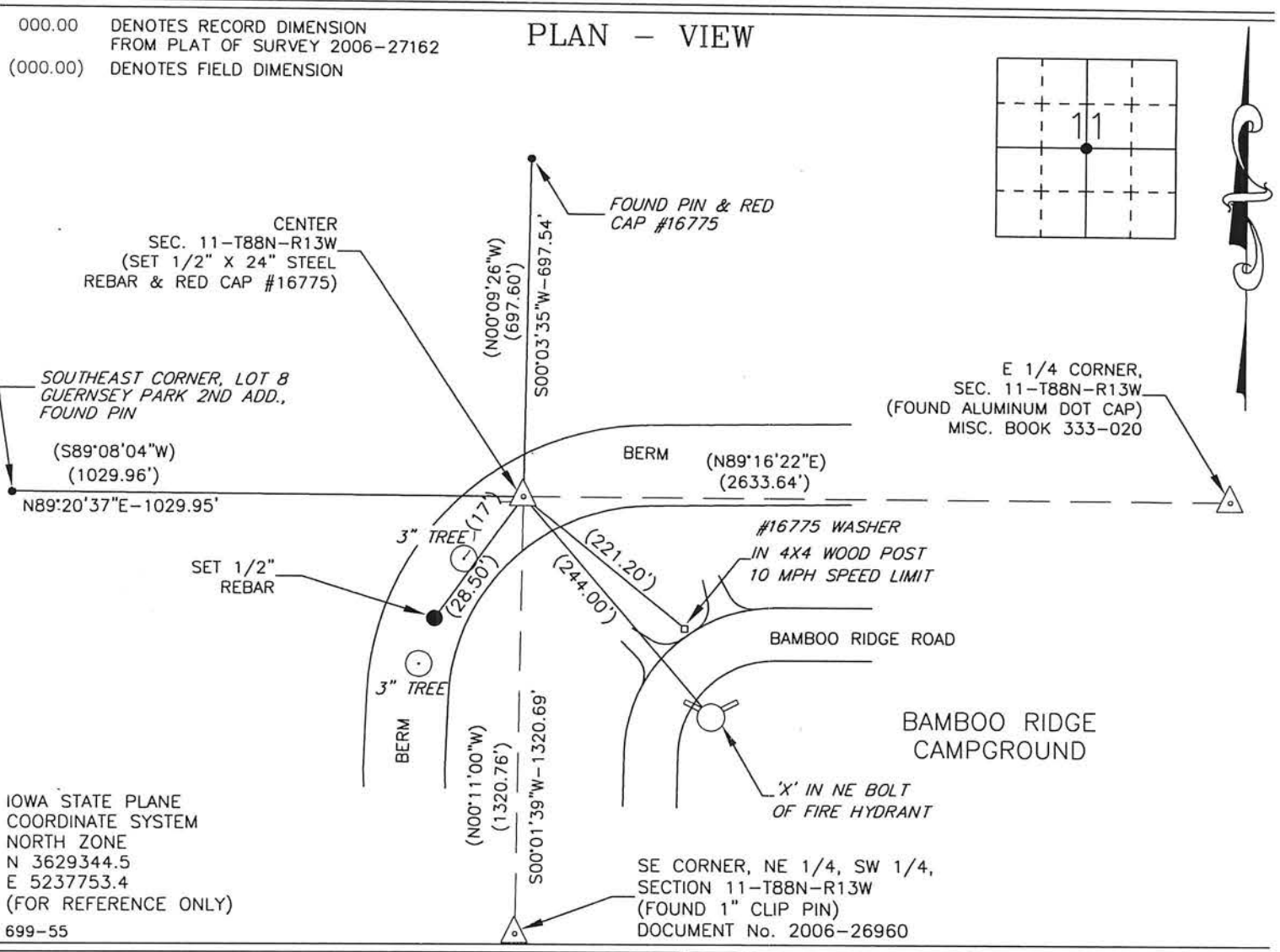
# UNITED STATES PUBLIC LAND SURVEY CORNER CERTIFICATE

Land Survey Monuments situated in Section 11, Township 88 North, Range 13 West, of the Fifth Principal Meridian, Black Hawk County, Iowa.

Previously recorded in Document No. 2006-26960 in County Recorder's Office.  
(book, page, document number, etc.)

## Monument Description and Remarks

Went to location of Center of Section and could not find 1" open pipe or the ties from the above document. Reset Center using data from Plat of Survey of Parcel "A", Document No. 2006-27162 in the Black Hawk County Recorder's Office. This certificate is being filed because monumentation has changed and to replace missing ties.



I hereby certify that this land surveying document was prepared and the related survey work was performed by me or under my direct personal supervision and that I am a duly Licensed Land Surveyor under the laws of the State of Iowa.

Signature: David L. Scheil  
Date: JUNE 19, 2015 Lic. No. 16775

Pages or Sheets Covered by this Seal: THIS SHEET ONLY.

My license renewal date is December 31, 2016

SEAL

### List Corners to be Indexed

Corners	Section	Twp	Range
CENTER,	11	88 N	13 W

