

Number: 202200024200
Recorded: 6/14/2022 at 8:59:14.0 AM
County Recording Fee: \$7.00
Iowa E-Filing Fee: \$3.13
Combined Fee: \$10.13
Revenue Tax:
Sandie L. Smith, RECORDER
Black Hawk County, Iowa

Prepared By: Matthew A. Kofa, P.L.S., VJ Engineering, 1501 Technology Parkway, Suite 100, Cedar Falls, Iowa, 50613, (319) 266-5829
Return To: Matthew A. Kofa, P.L.S., VJ Engineering, 1501 Technology Parkway, Suite 100, Cedar Falls, Iowa, 50613, (319) 266-5829

United States Public Land Survey Corner Certificate of

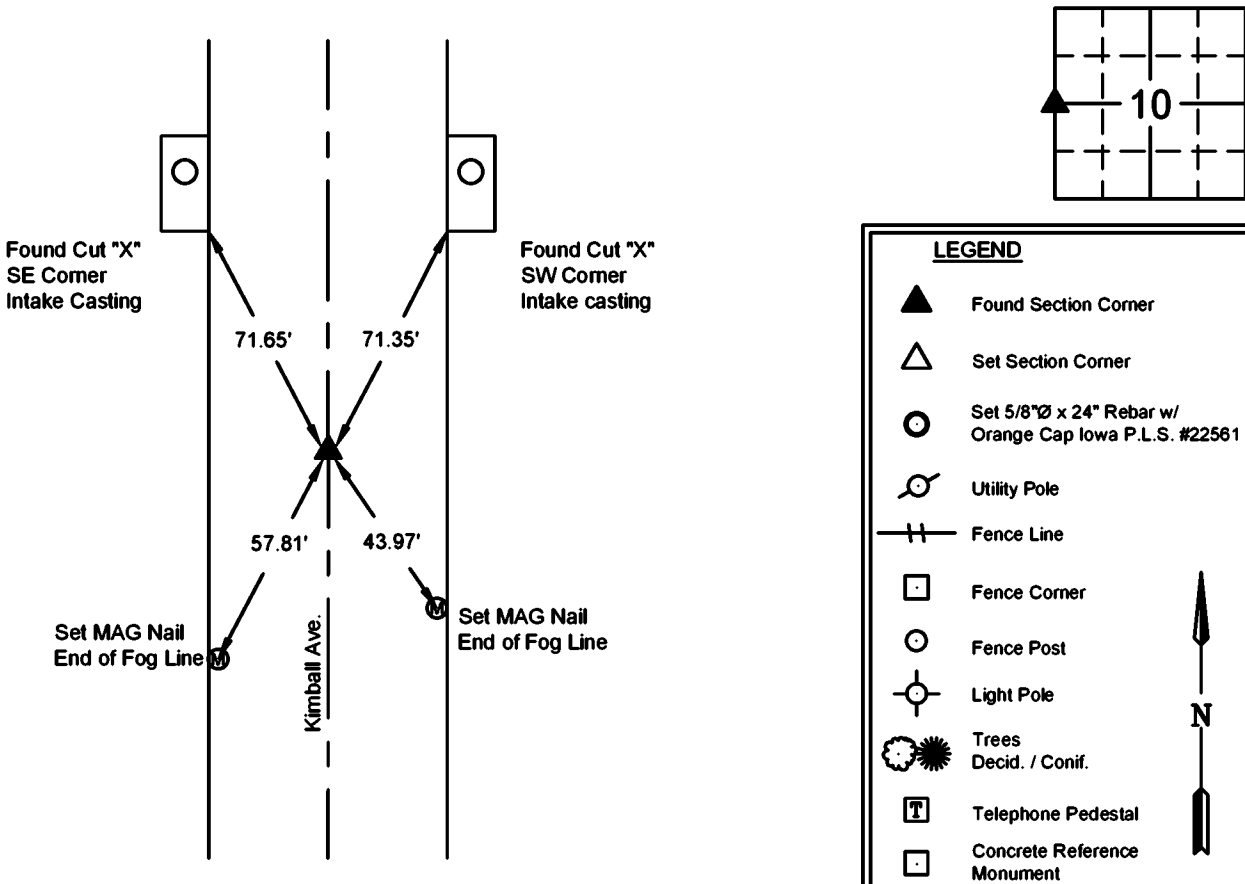
Land Survey Monuments situated in Section No. 10 , Township No. 88 N ,
Range No. 13 W , of the Fifth Principal Meridian, Black Hawk County, Iowa
Previously recorded in Document No. 2012-00001312

Show reason for preparing this certificate, the evidence and detailed procedures used in establishing the corner positions and monumentation found or placed.

Monument Description and Remarks: West 1/4 Corner -- Section 10-T88N-R13W
Previous corner certificate indicates the corner is a PK Nail. Searched area and found a MAG Nail, accepted and used the MAG Nail as the corner.
This corner certificate is being prepared to update the reference ties.

PLAN - VIEW

(Show a minimum of three reference ties to durable physical objects, relevant monuments and physical conditions that will enable recovery of the corner.)



I hereby certify that this land surveying document was prepared and the related survey work was performed by me or under my direct personal supervision and that I am a duly licensed Land Surveyor under the laws of the State of Iowa.

Matthew A. Kofa
Matthew A. Kofa, P.L.S.
License Number 22561
My license renewal date is December 31, 2022
Pages or sheets covered by this seal: 1 of 1

List Corner to be Indexed

| Corner | Section | Twp | Range |
|----------|---------|------|-------|
| West 1/4 | 10 | 88 N | 13 W |
| East 1/4 | 09 | 88 N | 13 W |



VJ Engineering
1501 Technology Parkway
Cedar Falls, Iowa - 319-266-5829

Section Corner
Reference Ties

file no.
228044
drawn by
MAK
date
6/10/22