

UNITED STATES PUBLIC LAND SURVEY CORNER CERTIFICATE  
OF

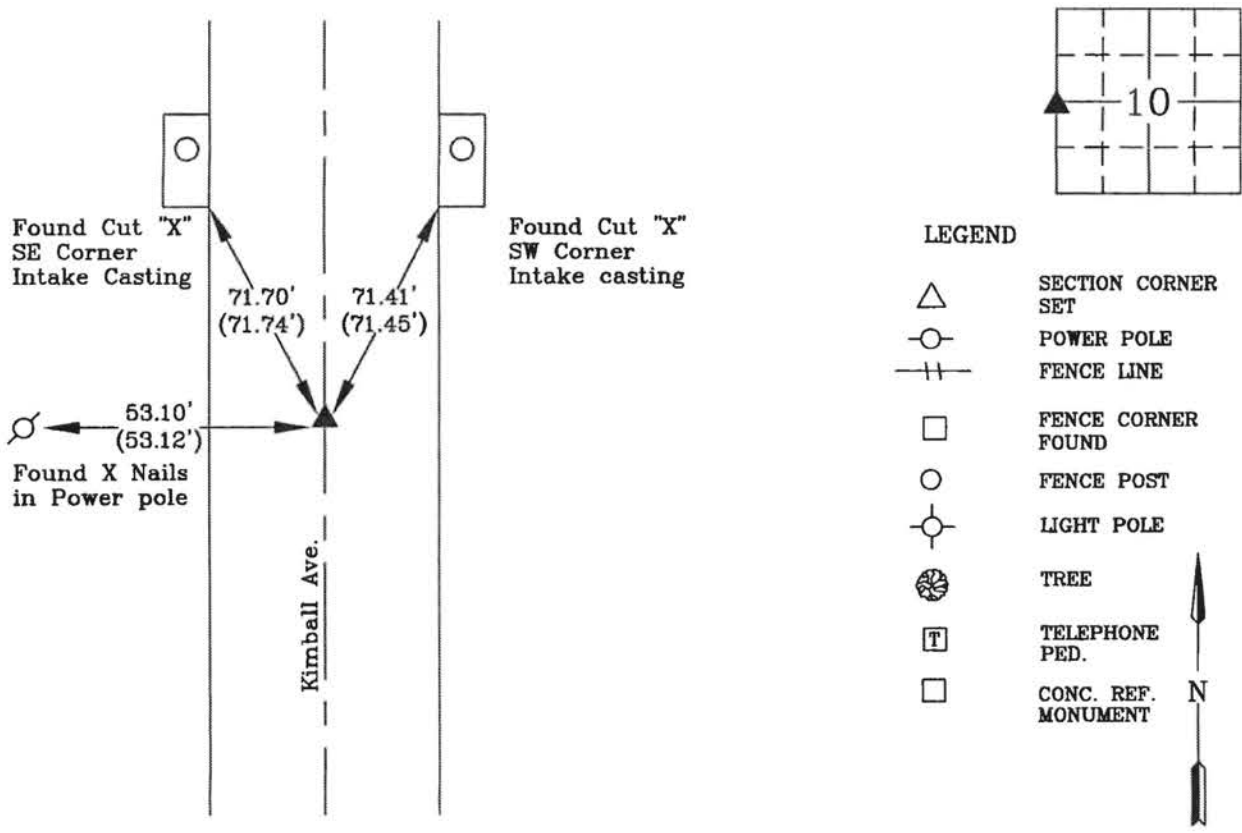
Land Survey Monuments situated in Section 10, Township 88 N, Range 13 W, of the Fifth Principal Meridian, Black Hawk County, Iowa  
Previously recorded in Book Misc. 336, Page 947.

Show reason for preparing this certificate, the evidence and detailed procedures used in establishing the corner positions and monumentation found or placed.)

Monument Description and Remarks: West 1/4 Corner 10-88-13  
Searched area with metal locator and found signal but road has been overlaid with asphalt. Used ties from previous corner certificate to set a PK Nail where ties cross. Corner was used for a survey in the NW 1/4 of section. Certificate is being prepared due to a change in monumentation.

PLAN - VIEW

(Show a minimum of three reference ties to durable physical objects, relevant monuments and physical conditions recovery of the corner.)



I hereby certify that this land surveying document was prepared and the related survey work was performed by me or under my direct personal supervision and that I am a duly licensed Land Surveyor under the laws of the State of Iowa.



Wendell J. Lupkes 7-13-11  
WENDELL J. LUPKES, L.S. DATE  
License number 12088  
My license renewal date is December 31, 2012  
Pages or sheets covered by this seal: 1

List Corner to be Indexed

Corner	Section	Twp	Range
W 1/4 Cor.	10	88 N	13 W



\*VJ Engineering  
1501 Technology Parkway  
Cedar Falls, Iowa - 319-266-5829

SECTION CORNER  
REFERENCE TIES

Scale NONE
drawn by JAL
date 5/13/11