



Doc ID: 005621500001 Type: GEN
Recorded: 11/17/2014 at 02:19:43 PM
Fee Amt: \$7.00 Page 1 of 1
Black Hawk County Iowa
JUDITH A MCCARTHY RECORDER

File **2015-00008427**

REC FEE 5.00
E FEE 2.00
TRAN FEE _____
REV FEE _____
GF _____

Michael R. Fagle, L.S.



AECOM, 501 Sycamore St., Suite 222, Waterloo, Iowa 50703

1-319-232-6531

UNITED STATES PUBLIC LAND SURVEY CORNER CERTIFICATE
OF

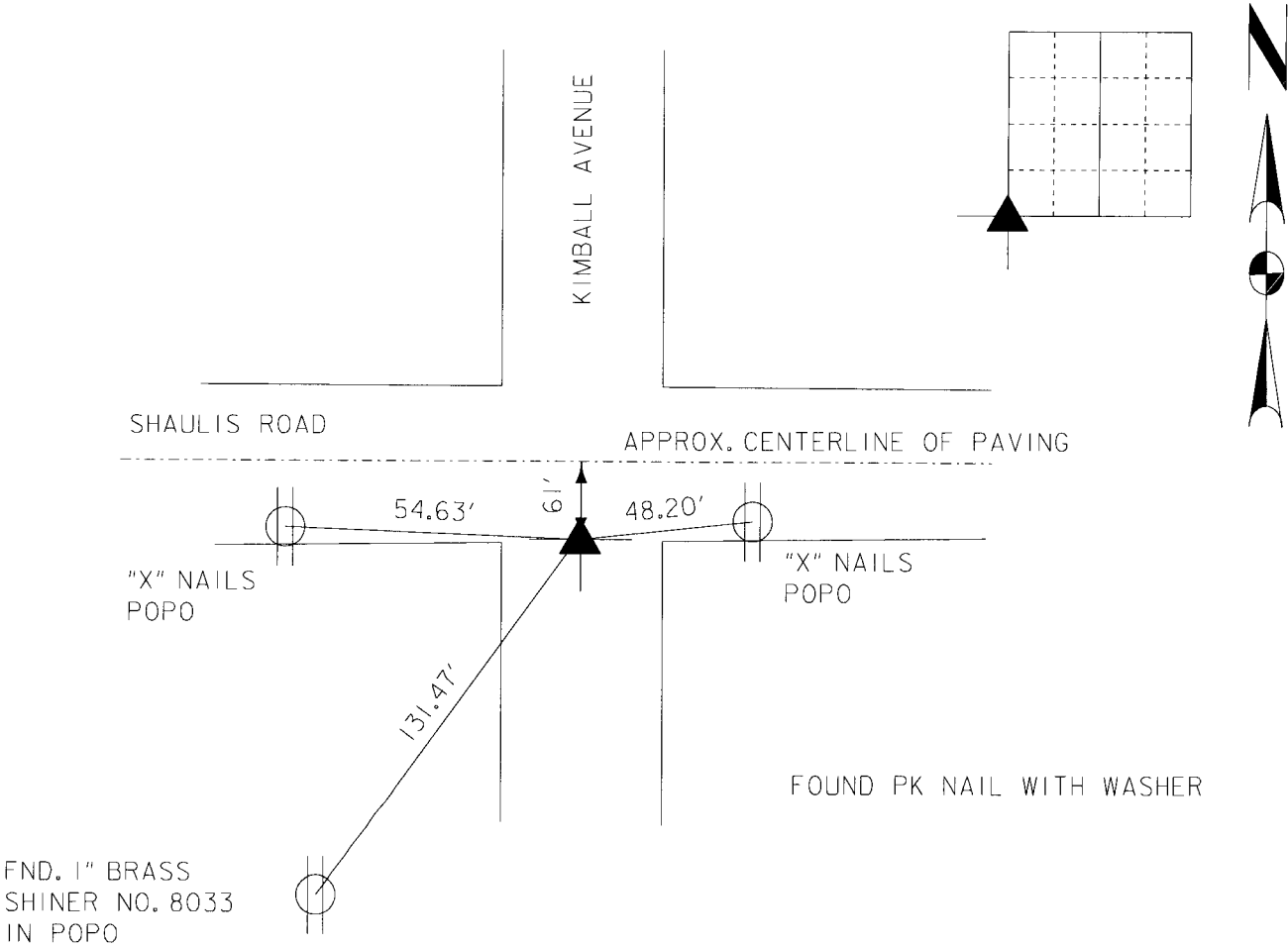
Land Survey Monuments situated in Section 10, Township 88 North,
Range 13 West, of the Fifth Principal Meridian, BLACK HAWK
County, Iowa. Previously recorded in Document Number 2007013542
in County Recorder's Office. (Book, Page, Document Number, etc.)

(Show reason for preparing this certificate, the evidence and detailed procedures used in establishing the corner positions and monumentation found or placed.)

Monument Description and Remarks: Found PK Nail with Washer.

PLAN - VIEW

(Show a minimum of three reference ties to durable physical objects, relevant monuments and physical conditions that will enable recovery of the corner.)



I hereby certify that this Land Surveying document was prepared by me or under my direct personal supervision and that I am a duly Licensed Land Surveyor under the laws of the State of Iowa.
Michael R. Fagle 11-17-2014
MICHAEL R. FAGLE Date
License number 8505
My license renewal date is December 31, 2014
Pages or sheets covered by this seal:
THIS SHEET

List Corners to be Indexed			
Corners	Section	Twp	Range
SOUTHWEST CORNER	10	T 88 N	R 13 W