



Doc ID: 005621490001 Type: GEN
Recorded: 11/17/2014 at 02:19:27 PM
Fee Amt: \$7.00 Page 1 of 1
Black Hawk County Iowa
JUDITH A MCCARTHY RECORDER

File 2015-00008426

REC FEE 5.00
E FEE 2.00
TRAN FEE
REV FEE
GF
Jm 21.00*

Michael R. Fagle, L.S.

AECOM, 501 Sycamore St., Suite 222, Waterloo, Iowa 50703

I-319-232-6531

UNITED STATES PUBLIC LAND SURVEY CORNER CERTIFICATE OF

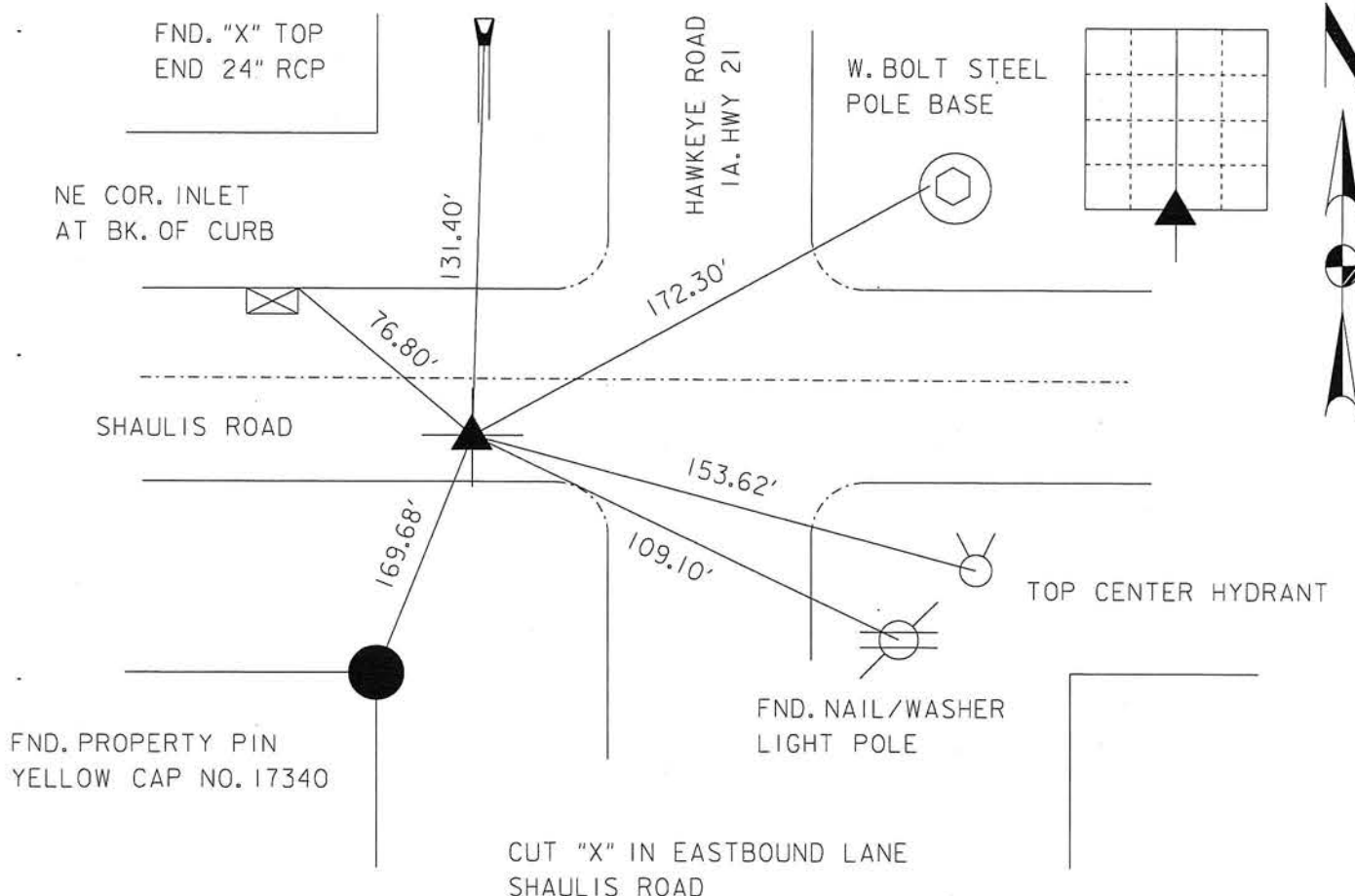
Land Survey Monuments situated in Section 10, Township 88 North,
Range 13 West, of the Fifth Principal Meridian, BLACK HAWK
County, Iowa. Previously recorded in Book 311, Page 982
in County Recorder's Office. (Book, Page, Document Number, etc.)

(Show reason for preparing this certificate, the evidence and detailed procedures used in establishing the corner positions and monumentation found or placed.)

Monument Description and Remarks: Cut "X" in Eastbound Lane Shaulis Road.
Location of corner was set using previous ties recorded in Book 311, page 982
and City of Waterloo Acquisition Plats recorded in Documents Nos. 201200012460
and 201200012496. Ties and documents are recorded in the Office of the Black
Hawk County recorder.

PLAN - VIEW

(Show a minimum of three reference ties to durable physical objects, relevant monuments and physical conditions that will enable recovery of the corner.)



List Corners to be Indexed

Corners	Section	Twp	Range
SOUTH CORNER	10	T 88 N	R 13 W



I hereby certify that this Land Surveying document was prepared by me or under my direct personal supervision and that I am a duly Licensed Land Surveyor under the laws of the State of Iowa.

Michael R. Fagle 11-17-2014
MICHAEL R. FAGLE Date

License number 8505

My license renewal date is December 31, 2014

Pages or sheets covered by this seal:

THIS SHEET