

MISC  
INDEX  
MARGIN  
PROOF  
COMPARE

BLACK HAWK COUNTY IOWA:SS  
FILED FOR RECORD JAN 14, 2000 AT  
4:00 P. M. AND RECORDED IN BOOK 336  
OF MISC PAGE 947

015208

*Catherine S. Soss*

RECORDER

FEE 1-5.00/

RETURN TO SNYDER & ASSOCIATES, INC. 501 SW ORALABOR ROAD, ANKENY, IOWA 50021 (888) 964-2020

50021

# UNITED STATES PUBLIC LAND SURVEY CORNER CERTIFICATE

## OF

Land Survey Monuments situated in Section 10, Township 88, Range 13, of the Fifth Principal Meridian, BLACKHAWK, County, Iowa.  
Previously recorded in NA in County Recorder's Office.  
(book, page, document number, ect.)

(Show reason for preparing this certificate, the evidence and detailed procedures used in establishing the corner positions and monuments found or placed.)

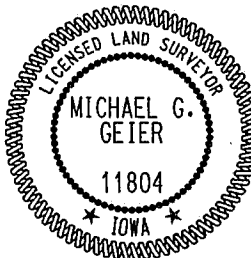
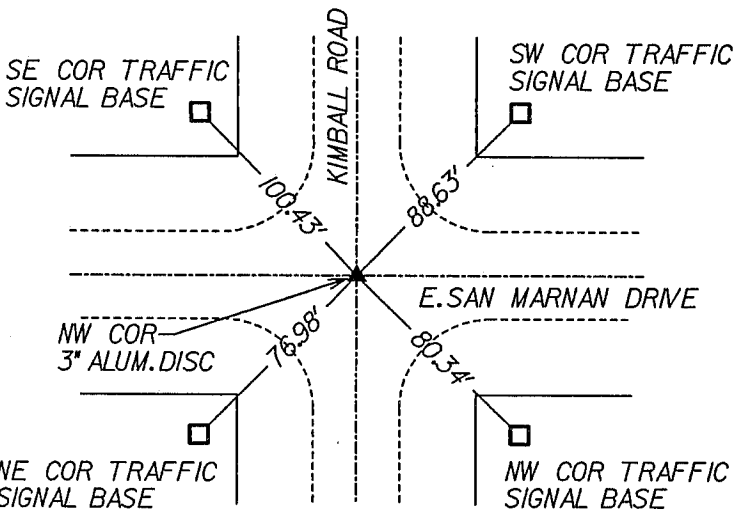
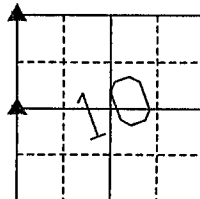
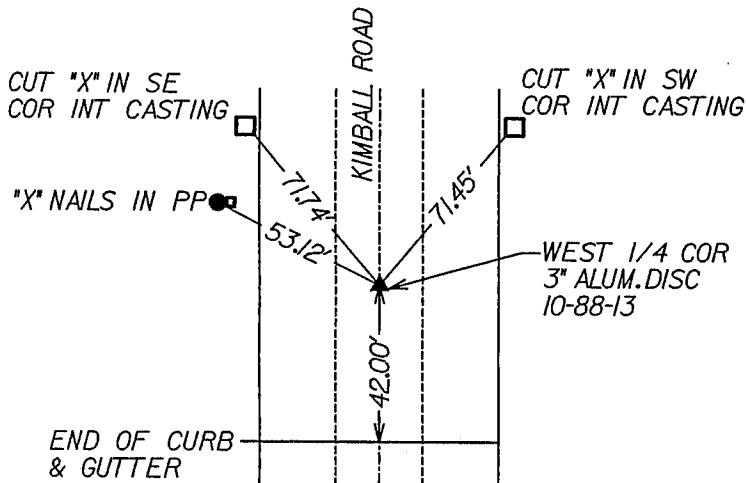
Monument Description and Remarks:

WEST 1/4 FOUND 3" ALUMINUM DISC IN C. OF KIMBALL ROAD FOUND WITH ODOMETER VERIFIED WITH EXISTING DISTANCE ON PREVIOUS PLAT

NW CORNER FOUND 3" ALUMINUM DISC AT C. C.

### Plan-View

(Show a minimum of three reference ties to durable physical objects, relevant monuments and physical conditions that will enable recovery of the corner.)



I hereby certify that this land surveying document was prepared and the related surveying work was performed by me or under my direct supervision and that I am a duly licensed Land Surveyor under the laws of the State of Iowa.

*Michael G. Geier* 1-12-2000  
Michael G. Geier, L.S. Date

License Number 11804

My License Renewal Date is December 31, 2001

Pages or sheets covered by this seal:

### List Corners to be Indexed

Corners	Section	Twp	Range
NW CORNER	10	88	13
W 1/4 CORNER	10	88	13

BOOK 336 PAGE 947

TECH: RLC

PN: 99513

DATE: 11/10/99