

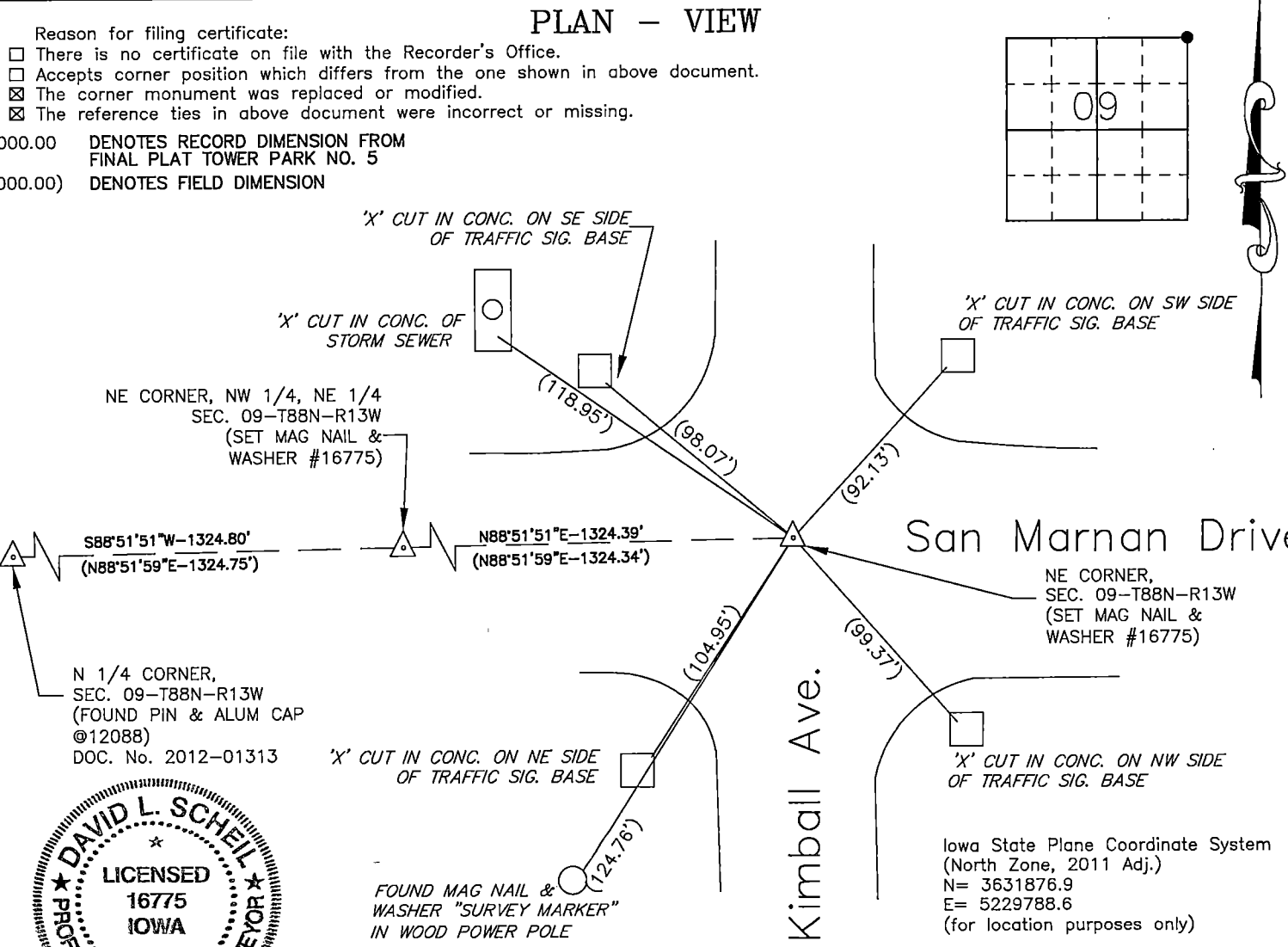
WAYNE CLAASSEN ENGINEERING AND SURVEYING, INC.  
P.O. BOX 898 WATERLOO, IOWA 50704-0898

PHONE: (VOICE) 319-235-6294  
(FAX) 319-235-0028

UNITED STATES PUBLIC LAND SURVEY CORNER CERTIFICATE

Land Survey Monuments situated in Section 09, Township 88 North, Range 13 West, of the Fifth Principal Meridian, Black Hawk County, Iowa.  
Previously recorded in Misc. Book 336-947 in County Recorder's Office.  
(book, page, document number, etc.)

Monument Description and Remarks  
Went to the intersection of Kimball Avenue and San Marnan Drive and did not find the 3" Aluminum Disk or the ties from the above Corner Certificate. Set mag nail and washer #16775 using ties from the Section Corners shown on Final Plat Tower Park No. 5.



I hereby certify that this land surveying document was prepared and the related survey work was performed by me or under my direct personal supervision and that I am a duly Licensed Land Surveyor under the laws of the State of Iowa.

Signature: David L. Scheil  
David L. Scheil, L.S.

Date: DEC. 01, 2020 Lic. No. 16775

Pages or Sheets Covered by this Seal: THIS SHEET ONLY.

My license renewal date is December 31, 2020

SEAL

List Corners to be Indexed			
Corners	Section	Twp	Range
NE CORNER,	09	88 N	13 W
NW CORNER,	10	88 N	13 W
SE CORNER,	04	88 N	13 W
SW CORNER,	03	88 N	13 W