

2025-02559
RECORDED: 02/25/2025 11:48:40 AM
RECORDING FEE: \$7.00
IOWA E-FILING FEE: \$3.13
COMBINED FEE: \$10.13
REVENUE TAX: \$0.00
SANDIE L. SMITH, RECORDER
BLACK HAWK COUNTY, IOWA

Prepared / Return To: Matthew A. Kofa, P.L.S., VJ Engineering, 1501 Technology Parkway, Suite 100, Cedar Falls, Iowa, 50613, (319) 266-5829

United States Public Land Survey Corner Certificate of

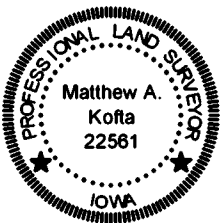
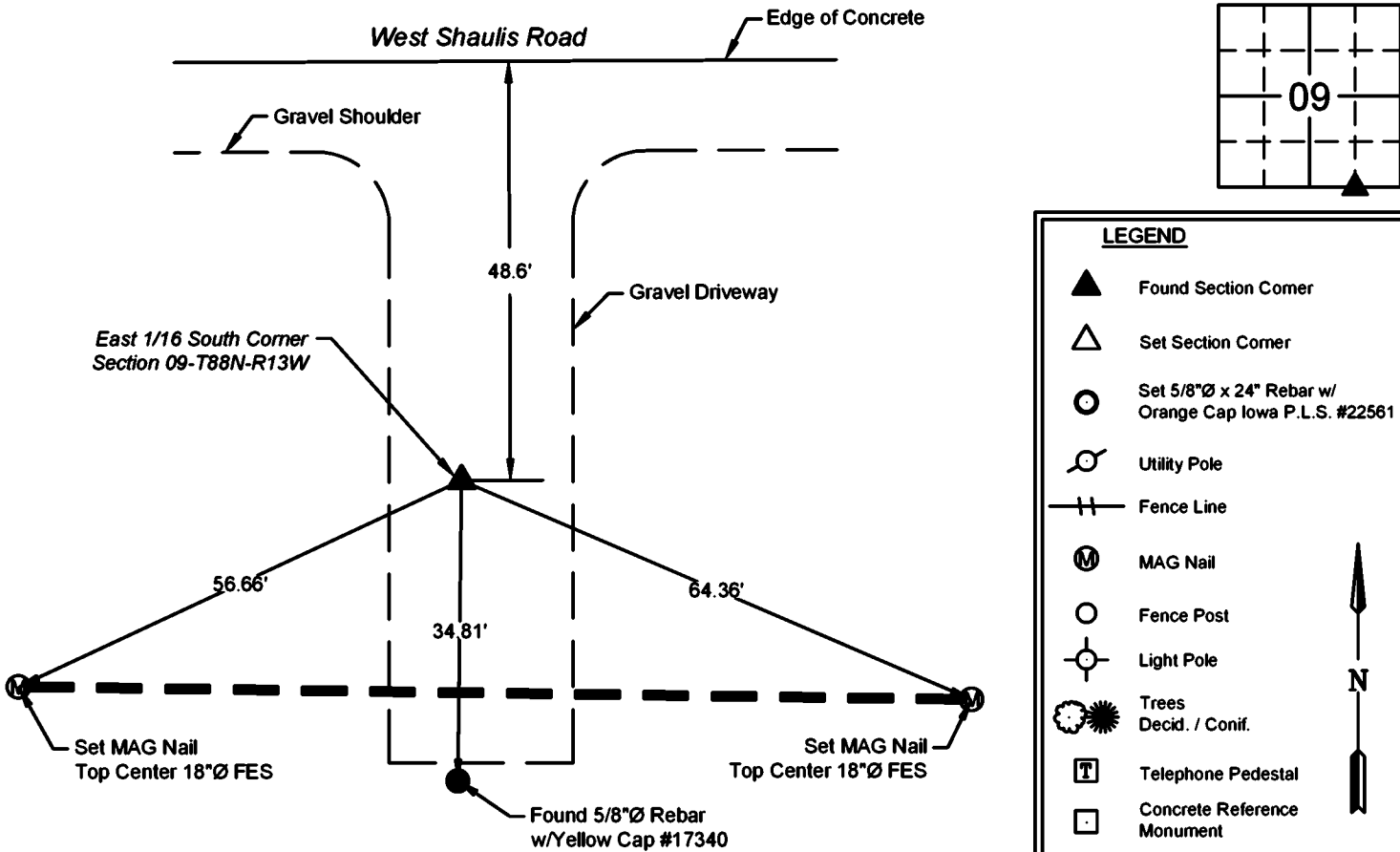
Land Survey Monuments situated in Section No. 09 , Township No. 88 North , Range No. 13 West , of the Fifth Principal Meridian, Black Hawk County, Iowa Previously recorded in N/A .

Show reason for preparing this certificate, the evidence and detailed procedures used in establishing the corner positions and monumentation found or placed.

Monument Description and Remarks: East 1/16 South Corner – Section 09-T88N-R13W
Acquisition Plat for West Shaulis right-of-way states that a 5/8"Ø Rebar w/Yellow Cap #17340 is at the corner.
Searched at location indicated and found a 5/8"Ø Rebar without an ID Cap at the corner, used found Rebar as the corner.
No previous corner certificate of record.

PLAN - VIEW

(Show a minimum of three reference ties to durable physical objects, relevant monuments and physical conditions that will enable recovery of the corner.)



I hereby certify that this land surveying document was prepared and the related survey work was performed by me or under my direct personal supervision and that I am a duly licensed Land Surveyor under the laws of the State of Iowa.

Matthew A. Kofa
Matthew A. Kofa, P.L.S.
License Number 22561
My license renewal date is December 31, 2026
Pages or sheets covered by this seal: 1 of 1

List Corner to be Indexed

Corner	Section	Twp	Range
E 1/16 S	09	88N	13W



VJ Engineering
1501 Technology Parkway
Cedar Falls, Iowa – 319-266-5829

Section Corner
Reference Ties

file no.
258008
drawn by
MAK
date
2/13/25