

WAYNE CLAASSEN ENGINEERING AND SURVEYING, INC.
P.O. BOX 898 WATERLOO, IOWA 50704-0898

PHONE: (VOICE) 319-235-6294
(FAX) 319-235-0028

UNITED STATES PUBLIC LAND SURVEY CORNER CERTIFICATE

Land Survey Monuments situated in Section 09, Township 88 North, Range 13 West, of the Fifth Principal Meridian, Black Hawk County, Iowa.

Previously recorded in (book, page, document number, etc.) in County Recorder's Office.

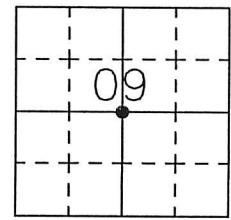
Monument Description and Remarks

Condemnation recorded in Document No. 2006-18278 on Jan. 24, 2006, shows an signed Acquisition Plat that shows "found 1 pinch top pipe" at center. Plat of Survey Parcel 'F' recorded in Document No. 2013-07386 on Oct. 11, 2012, show "fnd. 3/4" G.P.". Went to location of center and found 1" clip pin that reasonably matches location of the intersection of the opposite 1/4-corner.

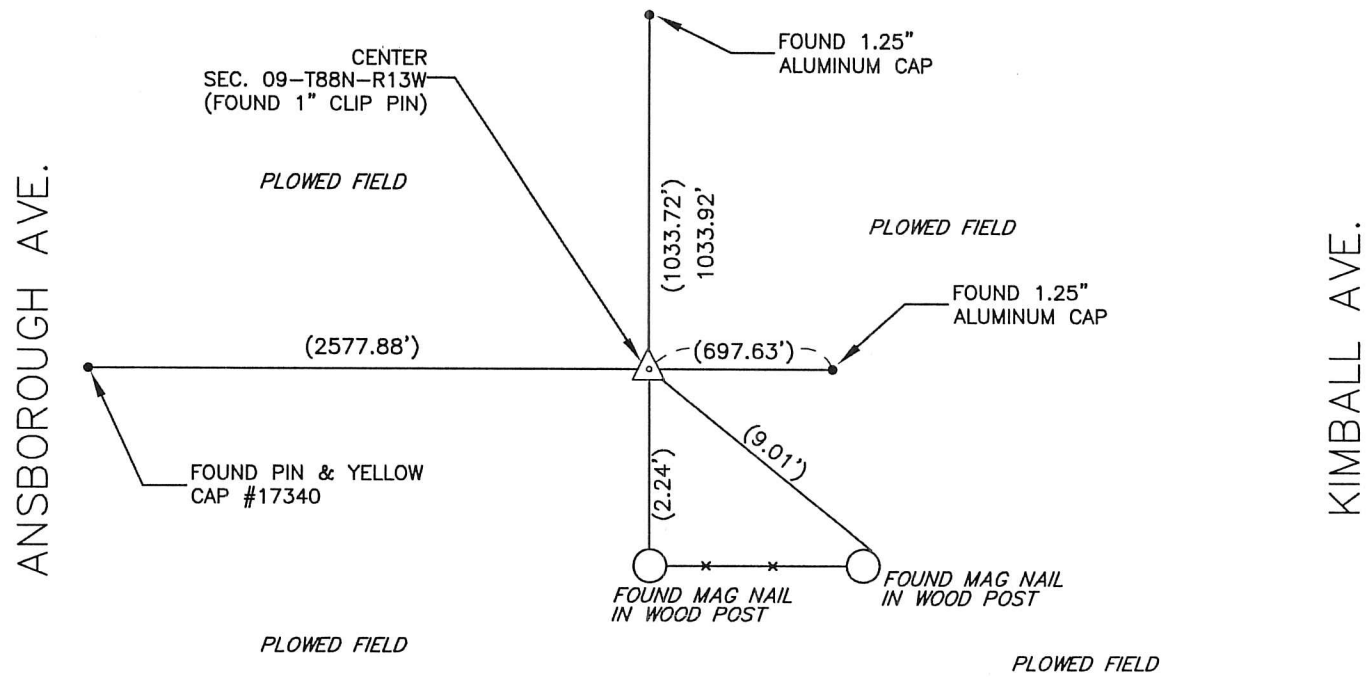
000.00 DENOTES RECORD DIMENSION
FROM ACQUISITION PLAT 2006-18278
(000.00) DENOTES FIELD DIMENSION

PLAN - VIEW

- Reason for filing certificate:
- ☒ There is no certificate on file with the Recorder's Office.
 - ☐ Accepts corner position which differs from the one shown in above document.
 - ☐ The corner monument was replaced or modified.
 - ☐ The reference ties in above document were incorrect or missing.



U.S. HIGHWAY 20



735-06

I hereby certify that this land surveying document was prepared and the related survey work was performed by me or under my direct personal supervision and that I am a duly Licensed Land Surveyor under the laws of the State of Iowa.

Signature: David L. Scheil, L.S.

Date: Nov. 19, 2015 Lic. No. 16775

Pages or Sheets Covered by this Seal: THIS SHEET ONLY.

My license renewal date is December 31, 2016

SEAL

List Corners to be Indexed

Corners	Section	Twp	Range
CENTER,	09	88 N	13 W



21.00 ✓ RK