

United States Public Land Survey Corner Certificate of

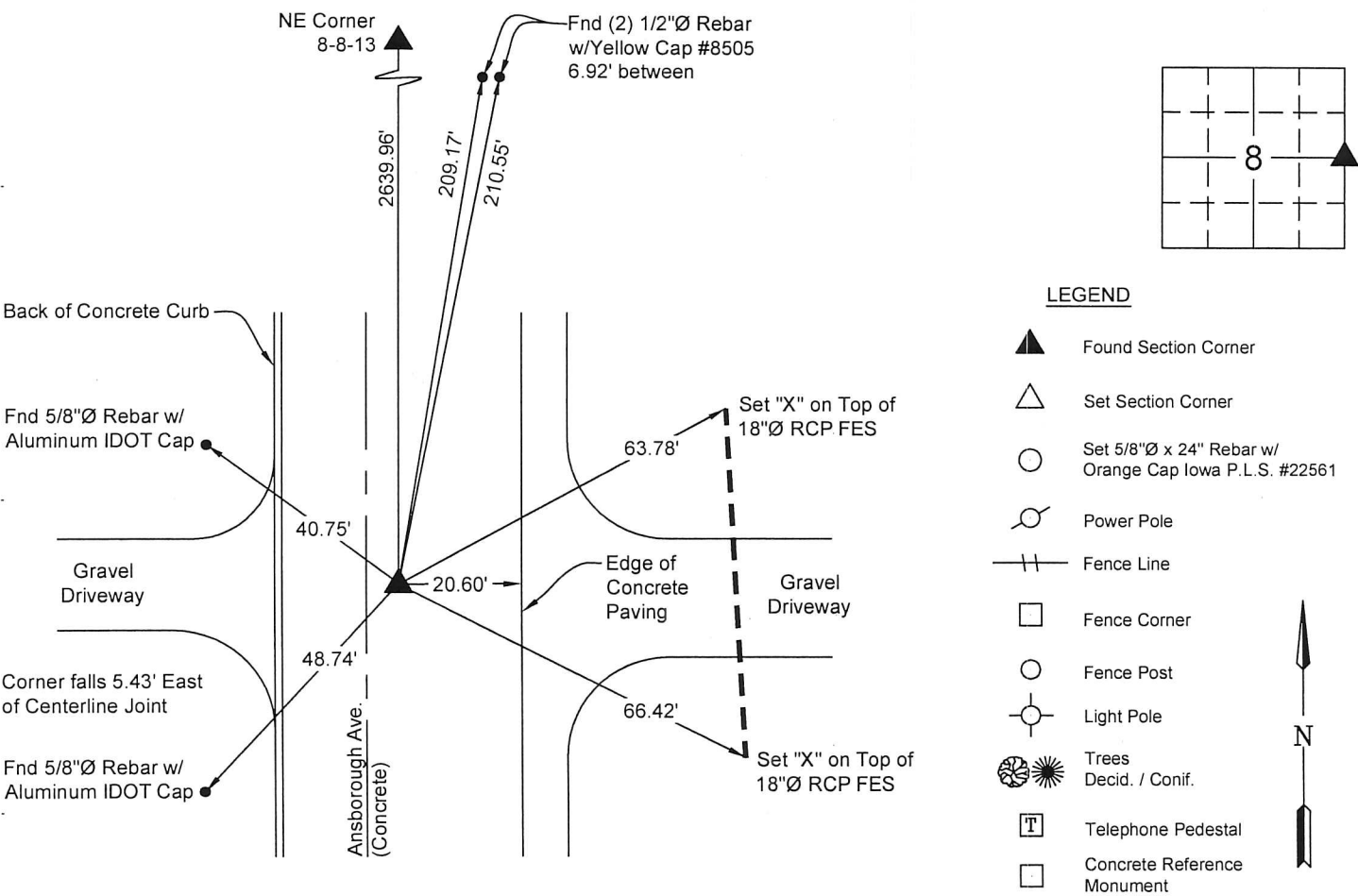
Land Survey Monuments situated in Section No. 8, Township No. 88 North, Range No. 13 West, of the Fifth Principal Meridian, Black Hawk County, Iowa
Previously recorded in Doc. #2010-017075.

Show reason for preparing this certificate, the evidence and detailed procedures used in establishing the corner positions and monumentation found or placed.)

Monument Description and Remarks: East Quarter Corner, Section 8 T88N R13W
Previous monumentation has been obliterated by the reconstruction of Ansborough Ave., used remaining reference ties to set a cut "X" in the concrete paving.
Corner was used for a survey in the NE 1/4 of Section 8 T88N R13W.
This corner certificate is being prepared because the monumentation and reference ties have changed.

PLAN - VIEW

(Show a minimum of three reference ties to durable physical objects, relevant monuments and physical conditions that will enable recovery of the corner.)



I hereby certify that this land surveying document was prepared and the related survey work was performed by me or under my direct personal supervision and that I am a duly licensed Land Surveyor under the laws of the State of Iowa.

Matthew A. Kofa, P.L.S. Date 6-22-15
License Number 22561
My license renewal date is December 31, 2016
Pages or sheets covered by this seal: 1

List Corner to be Indexed			
Corner	Section	Twp	Range
East Quarter Corner	8	88 North	13 West

VJ Engineering
1501 Technology Parkway
Cedar Falls, Iowa - 319-266-5829

Section Corner
Reference Ties

file no. 148069
drawn by MAK
date 6/22/15