

UNITED STATES PUBLIC LAND SURVEY CORNER CERTIFICATE

OF

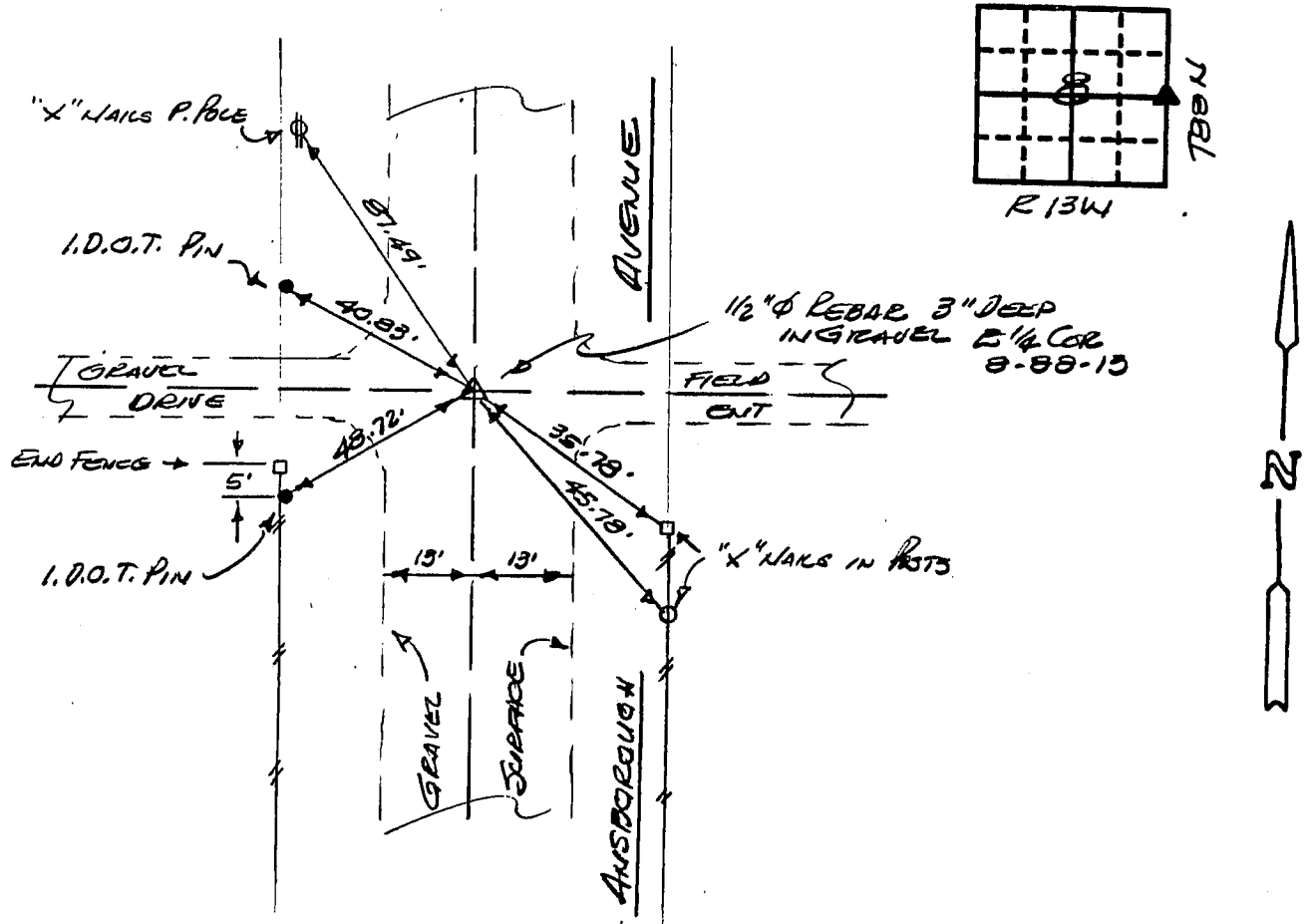
Land Survey Monuments situated in Section 8, Township 88N, Range 13W, of the Fifth Principal Meridian, BLACK HAWK County, Iowa.
Previously recorded in N/A in County Recorder's Office.
(book, page, document number, etc.)

(Show reason for preparing this certificate, the evidence and detailed procedures used in establishing the corner positions and monumentation found or placed.)

Monument Description and Remarks: FOUND 1/2" Ø REBAR 3" DEEP. CLAESSEN
ENGINEERING HAS A RECORD OF THIS CORNER SINCE 1970 WHEN A SON
WAS FOUND 4" DEEP. AGAIN IN 1984 THE SON WAS FOUND & RETIED. IN
1991, THE MONUMENT WAS GONE BUT 1/2" Ø REBAR FOUND IN ITS PLACE.
THE 1984 TIES MATCHED VERY WELL & 1/2" Ø BAR ACCEPTED.

PLAN - VIEW

(Show a minimum of three reference ties to durable physical objects, relevant monuments and physical conditions that will enable recovery of the corner.)



I hereby certify that the survey work was completed and this certificate was prepared by me or under my direct personal supervision and that I am a duly registered land surveyor under the laws of the state of Iowa.

Signature: F. William King
Name typed or printed: F. WILLIAM KING
Date: 3-13-1991 Reg. No. 8033

Corners	List Corners to be Indexed	Section	Twp	Range
E 1/4	8	88N	13W	

SEAL



MISC. BK. 295 p. 116