



Doc ID: 005419670002 Type: GEN
Kind: CORNER
Recorded: 03/13/2014 at 08:36:17 AM
Fee Amt: \$12.00 Page 1 of 2
Black Hawk County Iowa
JUDITH A MCCARTHY RECORDER

File 2014-00016458

WAYNE CLAASSEN ENGINEERING AND SURVEYING, INC.
P.O. BOX 898 WATERLOO, IOWA 50704-0898

PHONE: (VOICE) 319-235-6294
(FAX) 319-235-0028

UNITED STATES PUBLIC LAND SURVEY CORNER CERTIFICATE

Land Survey Monuments situated in Section 08, Township 88 North, Range 13 West, of the Fifth Principal Meridian, Black Hawk County, Iowa.

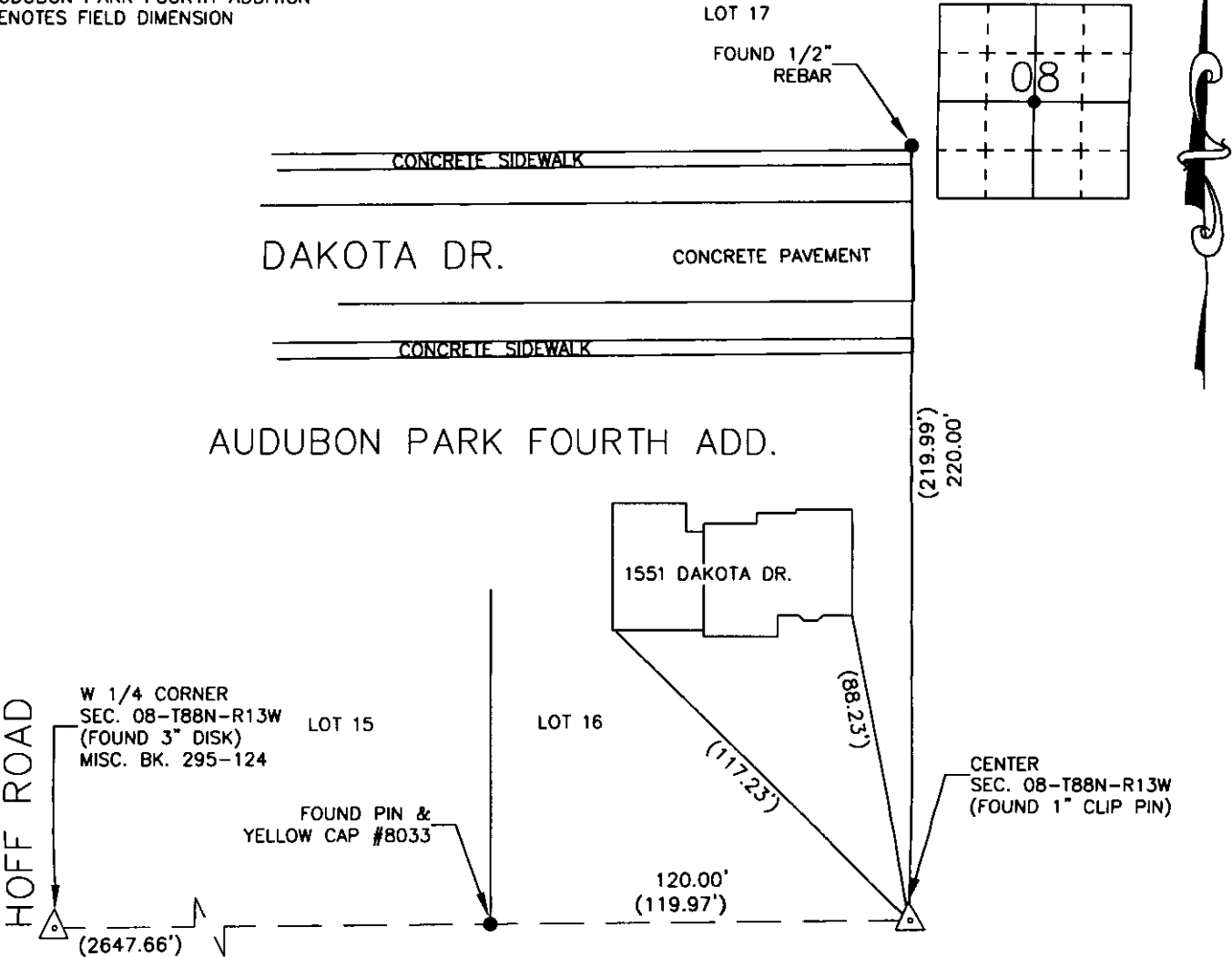
Previously recorded in (book, page, document number, etc.) in County Recorder's Office.

Monument Description and Remarks

No field notes from Black Hawk County Engineer's Office. Found 1" Clip Pin at the Southeast corner of Lot Sixteen (16), Audubon Park Fourth Addition, Waterloo, Iowa. This certificate was filed because there is no certificate on file.

000.00 DENOTES RECORD DIMENSION FROM
AUDUBON PARK FOURTH ADDITION
(000.00) DENOTES FIELD DIMENSION

PLAN - VIEW



723-02

I hereby certify that this land surveying document was prepared and the related survey work was performed by me or under my direct personal supervision and that I am a duly Licensed Land Surveyor under the laws of the State of Iowa.

Signature: David L. Scheil
David L. Scheil, L.S.
Date: MARCH 11, 2014 Lic. No. 16775

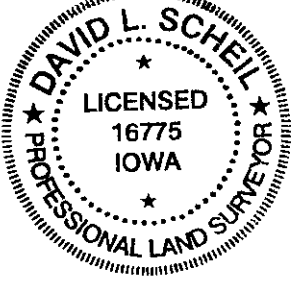
Pages or Sheets Covered by this Seal: THIS SHEET ONLY.

My license renewal date is December 31, 2014

SEAL

List Corners to be Indexed

Corners	Section	Twp	Range
CENTER,	08	88 N	13 W



*WAYNE CLAASSEN ENGINEERING AND SURVEYING, INC.
P.O. BOX 898 WATERLOO, IOWA 50704-0898

PHONE: (VOICE) 319-235-6294
(FAX) 319-235-0028

UNITED STATES PUBLIC LAND SURVEY CORNER CERTIFICATE

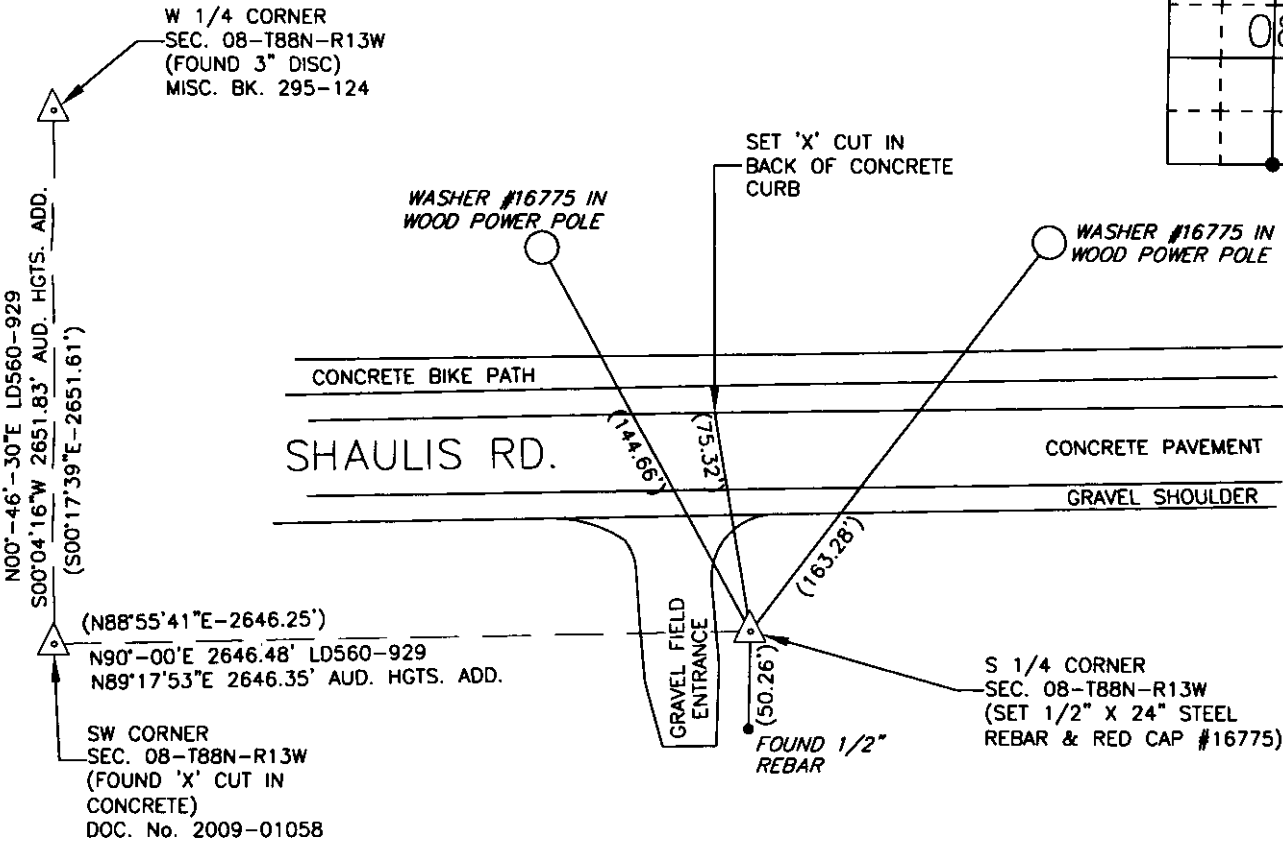
Land Survey Monuments situated in Section 08, Township 88 North, Range 13 West, of the Fifth Principal Meridian, Black Hawk County, Iowa.
Previously recorded in MISC. BK. 295, PG. 114 in County Recorder's Office.
(book, page, document number, etc.)

Monument Description and Remarks

Searched approximate 20' radius area with metal detector for 1/2" rebar in above listed corner certificate and did not find it. Therefore, set 1/2" x 24" steel rebar with red cap #16775 using ties from Audubon Heights Addition plat and Plat of Survey in Land Deed 560, page 929 in the Black Hawk County Recorder's Office. This certificate was filed because the corner monumentation was replaced and the reference ties from the above listed corner certificate were missing.

000.00 DENOTES RECORD DIMENSION FROM
(000.00) DENOTES FIELD DIMENSION

PLAN - VIEW



723-02

I hereby certify that this land surveying document was prepared and the related survey work was performed by me or under my direct personal supervision and that I am a duly Licensed Land Surveyor under the laws of the State of Iowa.

Signature:

David L. Scheil, L.S.

Date: March 11, 2014 Lic. No. 16775

Pages or Sheets Covered by this Seal: THIS SHEET ONLY.

My license renewal date is December 31, 2014

SEAL

List Corners to be Indexed

Corners	Section	Twp	Range
S 1/4 CORNER,	08	88 N	13 W
N 1/4 CORNER,	17	88 N	13 W

