



WAYNE CLAASSEN ENGINEERING AND SURVEYING, INC.
P.O. BOX 898 WATERLOO, IOWA 50704-0898

PHONE: (VOICE) 319-235-6294
(FAX) 319-235-0028

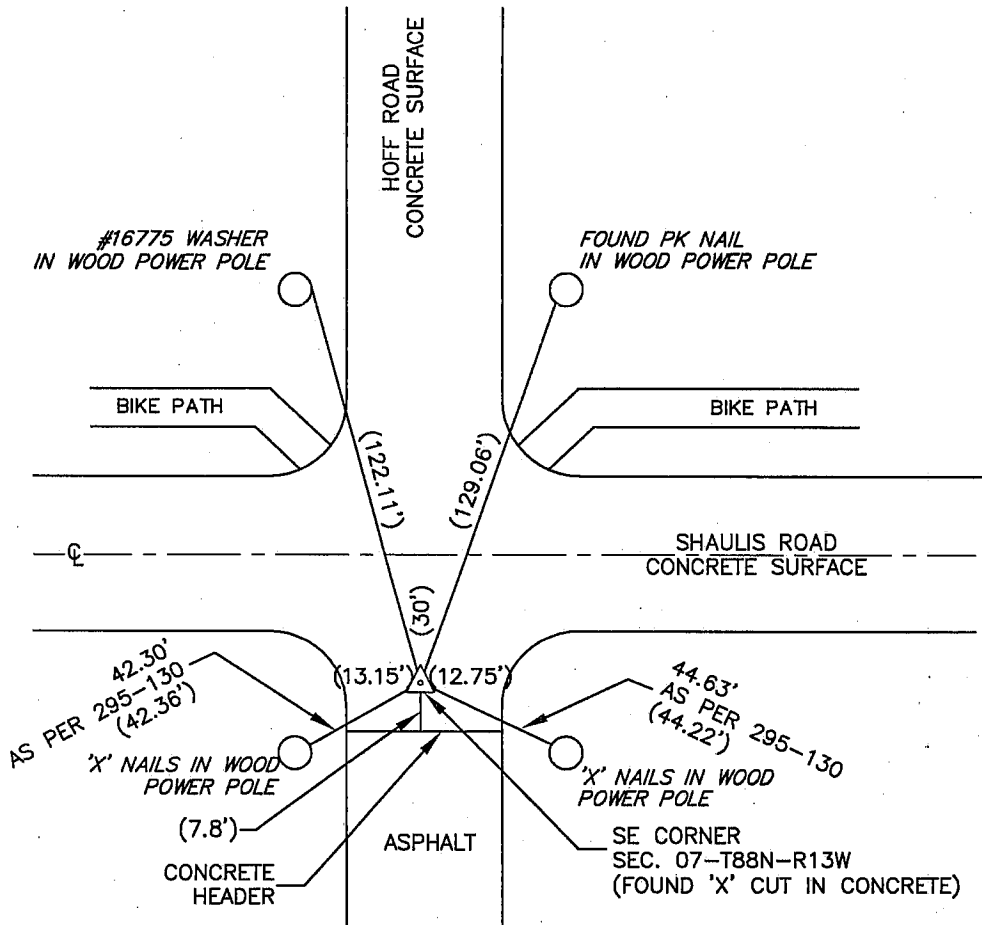
UNITED STATES PUBLIC LAND SURVEY CORNER CERTIFICATE

Land Survey Monuments situated in Section 07, Township 88 North, Range 13 West, of the Fifth Principal Meridian, Black Hawk County, Iowa.
Previously recorded in MISC. BK. 295-130 in County Recorder's Office.
(book, page, document number, etc.)

Monument Description and Remarks

Found 'X' cut in concrete that reasonably match the ties to a 3/4" open pipe in above record. As per Misc. Book 295, Page 130, "Claassen Engineering has 4 records of this corner from 1970, when SCM was found 15" deep."

PLAN - VIEW



BK 595, PG. 44

I hereby certify that, this land surveying document was prepared and the related survey work was performed by me or under my direct personal supervision and that I am a duly Licensed Land Surveyor under the laws of the State of Iowa.

Signature: David L. Scheil
David L. Scheil, L.S.

Date: July 14, 2008 Lic. No. 16775

Pages or Sheets Covered by this Seal: THIS SHEET ONLY.

My license renewal date is December 31, 2008

SEAL

List Corners to be Indexed

Corners	Section	Twp	Range
SE CORNER,	07	88 N	13 W

