

Reserved for County Recorder's use.



Doc ID: 011914330001 Type: GEN
Recorded: 03/14/2023 at 02:56:40 PM
Fee Amt: \$7.00 Page 1 of 1
Black Hawk County Iowa
SANDIE L. SMITH RECORDER

File 2023-00012512

Jeffrey P. Helland, 6109 Chancellor Drive, Cedar Falls, Iowa 50613-6916, (319)-266-0161

UNITED STATES PUBLIC LAND SURVEY CORNER CERTIFICATE
OF

LAND SURVEY MONUMENTS SITUATED IN SECTION NO. 7, TOWNSHIP NO. 88 NORTH, RANGE NO. 13 WEST OF THE FIFTH PRINCIPAL MERIDIAN, BLACK HAWK COUNTY, IOWA.
PREVIOUSLY RECORDED IN MISC. BOOK 294 PAGE 383

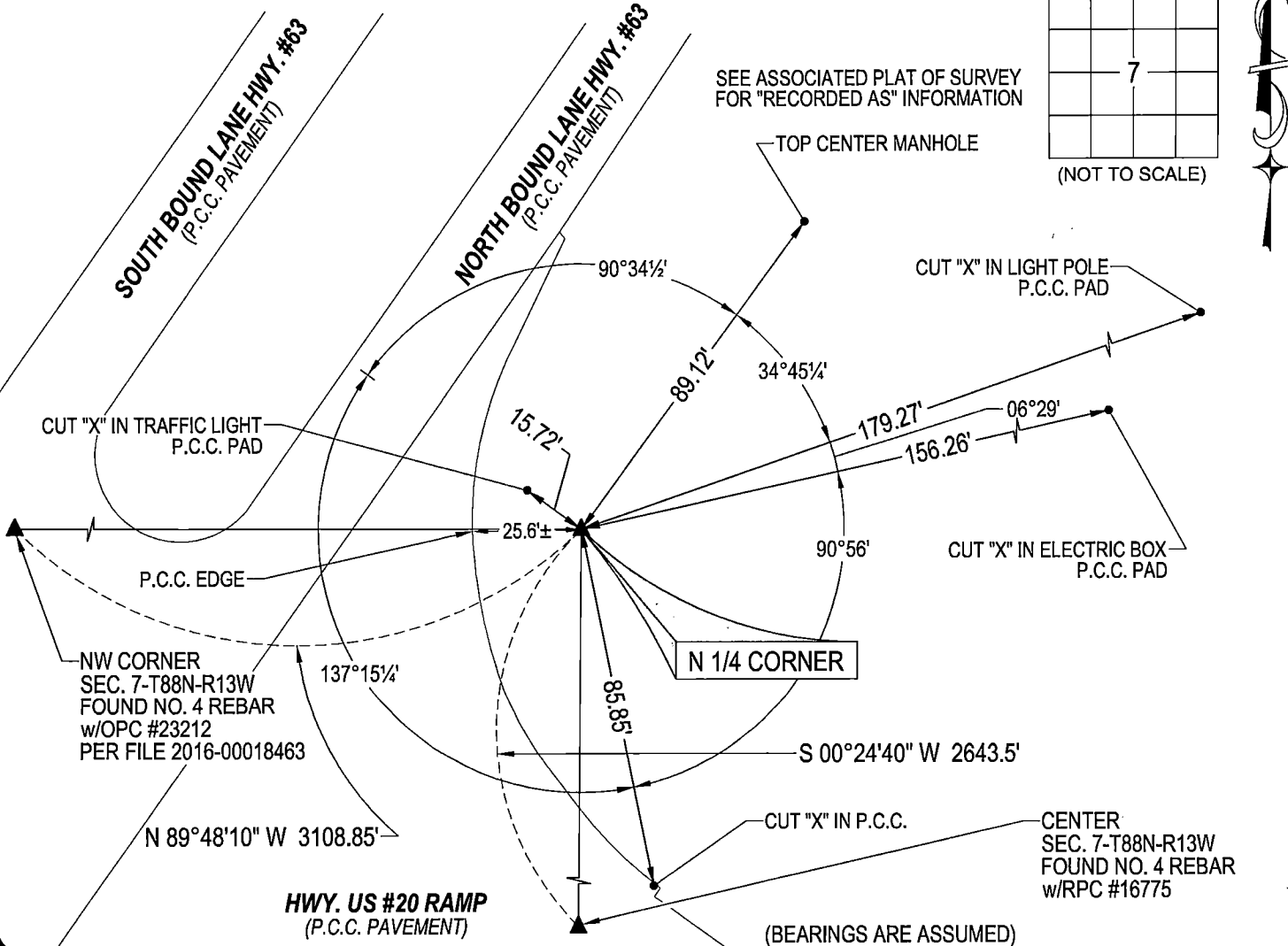
(SHOW REASON FOR PREPARING THIS CERTIFICATE, THE EVIDENCE AND DETAILED PROCEDURES USED IN ESTABLISHING THE CORNER POSITIONS AND MONUMENTATION FOUND OR PLACED.)

MONUMENT DESCRIPTION AND REMARKS:
ONLY ONE REFERENCE TIE REMAINS. SURVEY COMPLETED IN THE NW FRL 1/4 & SW FRL 1/4 OF SEC. 7-T88N-R13W.

N 1/4 CORNER: IDOT LAND CORNER SURVEY U-1119 DATED 07/25/1966 CALLS FOR [FOUND CONCRETE MONUMENT]. IDOT LAND CORNER STONE SURVEY FREEWAY NO 520 FN-520-6(4)--21-07 DATED 12/23/1976 CALLS FOR [FOUND BROKEN CONC. MON. SET REROD FLUSH]. USPLSCC MISC. BOOK 294 PAGE 383 DATED 01/30/1991 CALLS FOR [FOUND CONCRETE MONUMENT WITH 1/2"Ø REBAR IN CENTER AT 24" DEEP. SET 1/2"Ø OVER (CES RECORD 1987). FOUND 1/2"Ø REBAR 1-1991]. SEARCHED AREA WITH MAGNETIC DETECTOR, FOUND NO. 4 REBAR WITH YELLOW PLASTIC CAP 80?? 0.2'± DEEP. UTILIZED SAID NO. 4 REBAR AS CORNER.

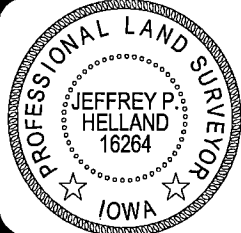
PLAN VIEW

(SHOW A MINIMUM OF THREE REFERENCE TIES TO DURABLE PHYSICAL OBJECTS, RELEVANT MONUMENTS AND PHYSICAL CONDITIONS THAT WILL ENABLE RECOVERY OF THE CORNER.)



HELLAND ENGINEERING & SURVEYING, LTD.
6109 Chancellor Drive
Cedar Falls, Iowa 50613-6916
(319)-266-0161

SHINER = 4d. NAIL & 1 5/16"Ø METAL SHINER DRAWN BY: CDR
BRASS TAG = 4d. NAIL & 13/16"Ø BRASS TAG
OPC = PLASTIC CAP (O=ORANGE, R=RED, Y=YELLOW)
(00') RECORDED AS FILE NAME: 23-107-28.DWG



I hereby certify that this land surveying document was prepared and the related survey work was performed by me or under my direct personal supervision and that I am a duly licensed Professional Land Surveyor under the laws of the State of Iowa.
Jeffrey P. Helland
License Number 16264
My license renewal date is December 31, 2023.
All pages or sheets are covered by this seal except:

LIST CORNERS TO BE INDEXED			
CORNER	SECTION	TOWNSHIP	RANGE
N 1/4 CORNER	7	88N	13W
S 1/4 CORNER	6	88N	13W