

Recorded

SLSI 9-90

UNITED STATES PUBLIC LAND SURVEY CORNER CERTIFICATE

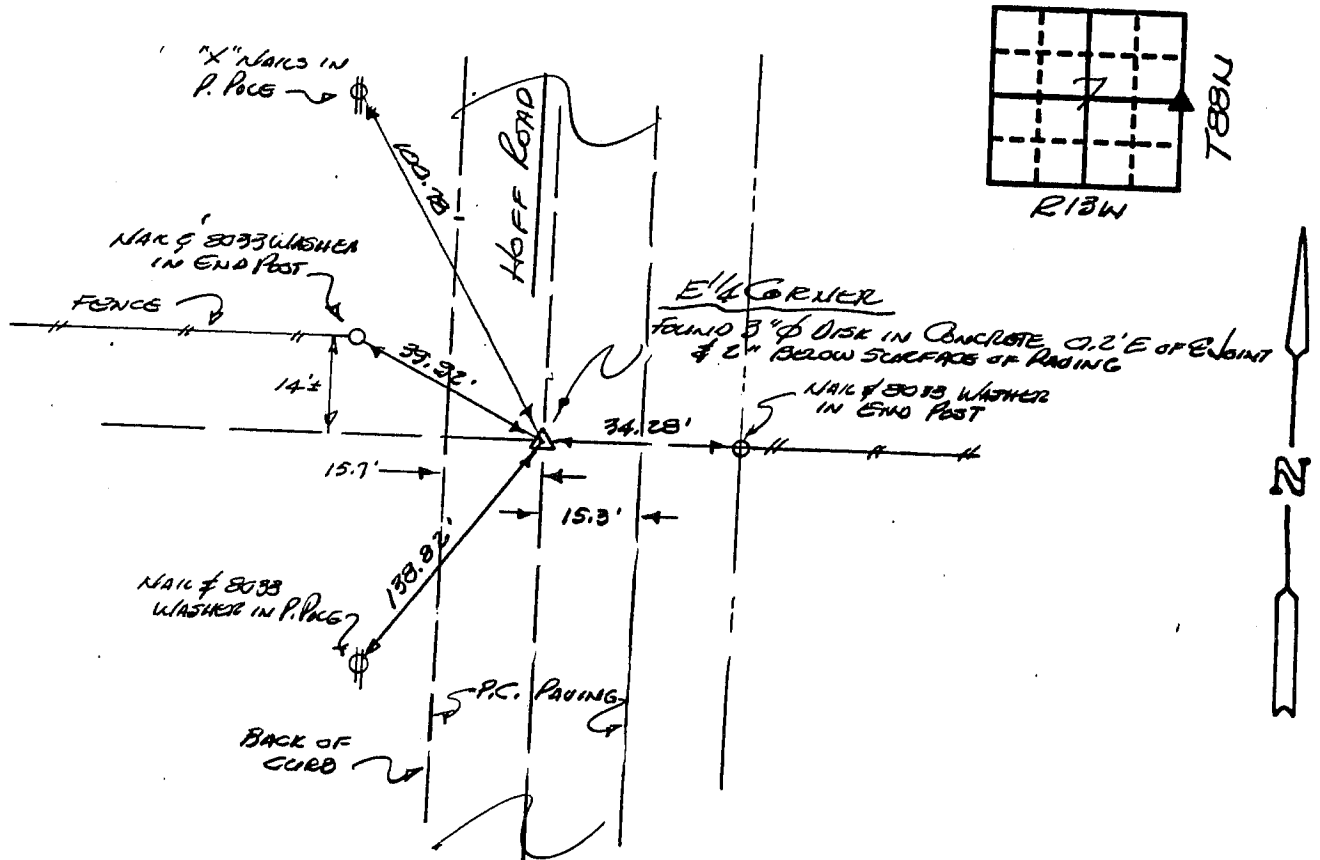
OF

Land Survey Monuments situated in Section 7, Township 88N, Range 13W, of the Fifth Principal Meridian, BLACK HAWK County, Iowa.
Previously recorded in N/A (book, page, document number, etc.) in County Recorder's Office.

(Show reason for preparing this certificate; the evidence and detailed procedures used in establishing the corner positions and monumentation found or placed.)
Monument Description and Remarks: FOUND 3" DISK IN CONCRETE PAVING. DISK STAMPED 7+8

PLAN - VIEW

(Show a minimum of three reference ties to durable physical objects, relevant monuments and physical conditions that will enable recovery of the corner.)



I hereby certify that the survey work was completed and this certificate was prepared by me or under my direct personal supervision and that I am a duly registered land surveyor under the laws of the state of Iowa.

Signature: F. William King

Name typed or printed: F. WILLIAM KING

Date: 3-12-1991 Reg. No. 8033



Corners	List Corners to be Indexed Section	Twp.	Range
E 1/4	7	88N	13W

MISC. BK. 295 p. 124