

ENV WAYNE CLAASSEN ENGINEERING & SURVEYING INC
2705 UNIVERSITY AVE
PO BOX 898
WATERLOO IA 50704

Ijk
P
Z

Document Number: 2008024978
Date: Jun 13, 2008 4:30:00 pm
Aud Fee: 0.00 Rec Fee: 5.00
Trans Tax: 0.00 Rec Management Fee: 1.00
E-Com Fee: 1.00 Non-Standard Page Fee: 0.00
Filed for record in Black Hawk County, Iowa
Judith A. McCarthy, County Recorder

WAYNE CLAASSEN ENGINEERING AND SURVEYING, INC.
P.O. BOX 898 WATERLOO, IOWA 50704-0898

PHONE: (VOICE) 319-235-6294
(FAX) 319-235-0028

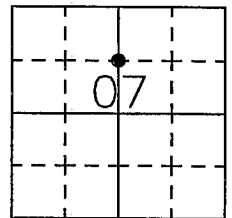
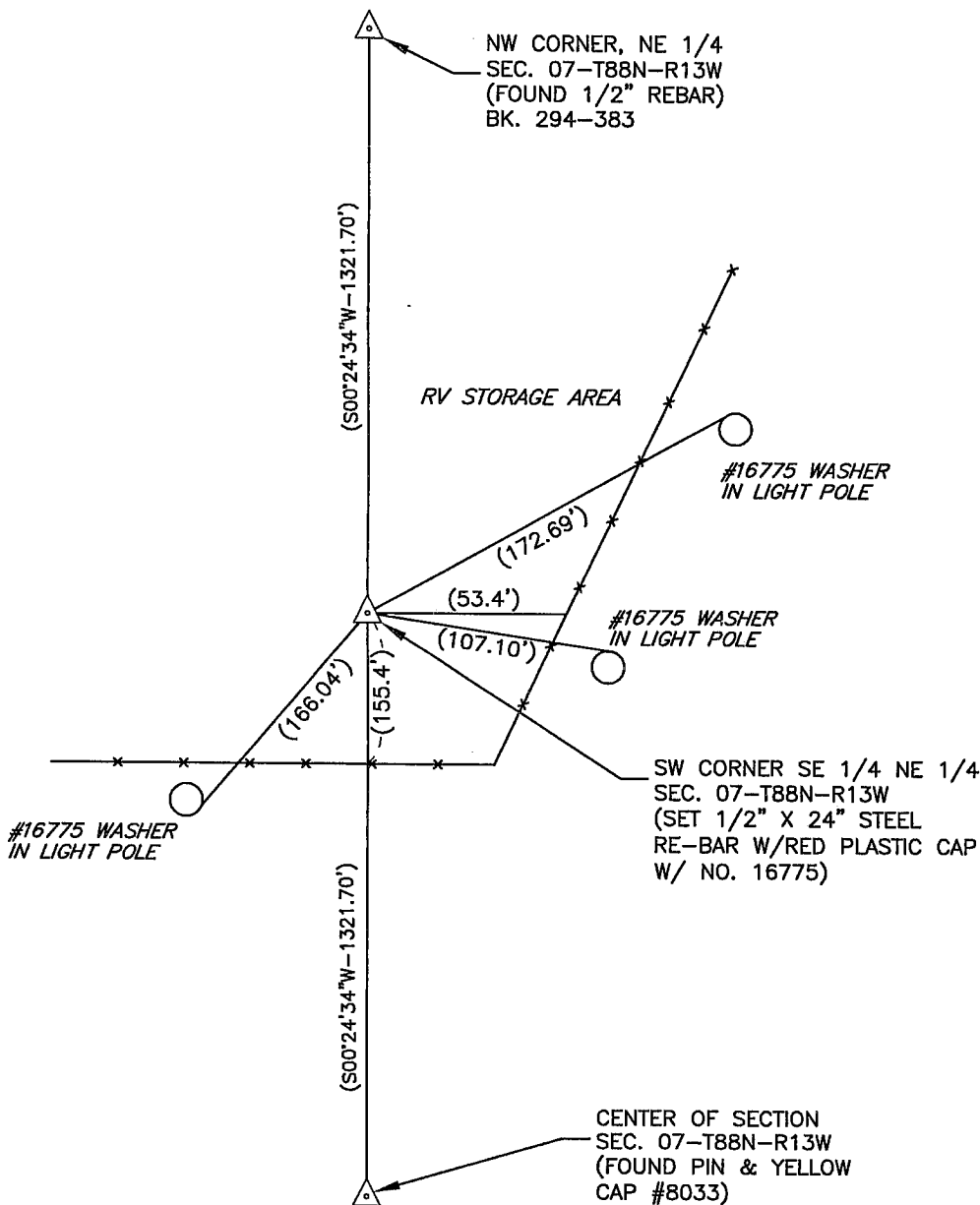
UNITED STATES PUBLIC LAND SURVEY CORNER CERTIFICATE

Land Survey Monuments situated in Section 07, Township 88 North, Range 13 West, of the Fifth Principal Meridian, Black Hawk County, Iowa.
Previously recorded in in County Recorder's Office.

Monument Description and Remarks

No certificate on file. Set 1/2" X 24" steel rebar with red plastic cap No. 16775 at the midpoint between the center corner of Section 7 and the North Quarter corner of Section 7.

PLAN - VIEW



BK 616, PG. 75

BEARINGS ASSUMED

I hereby certify that this land surveying document was prepared and the related survey work was performed by me or under my direct personal supervision and that I am a duly Licensed Land Surveyor under the laws of the State of Iowa.

Signature: David L. Scheil, L.S.

Date: June 10, 2008 Lic. No. 16775

Pages or Sheets Covered by this Seal: THIS SHEET ONLY.

My license renewal date is December 31, 2008

SEAL

List Corners to be Indexed

Corners	Section	Twp	Range
NW CORNER, SW1/4 NE1/4	07	88 N	13 W

