

Doc ID: 004211170001 Type: GEN
Kind: CORNER
Recorded: 07/28/2010 at 10:59:55 AM
Fee Amt: \$9.00 Page 1 of 1
Black Hawk County Iowa
JUDITH A MCCARTHY RECORDER
File **2011-00001789**

WAYNE CLAASSEN ENGINEERING AND SURVEYING, INC.
P.O. BOX 898 WATERLOO, IOWA 50704-0898

PHONE: (VOICE) 319-235-6294
(FAX) 319-235-0028

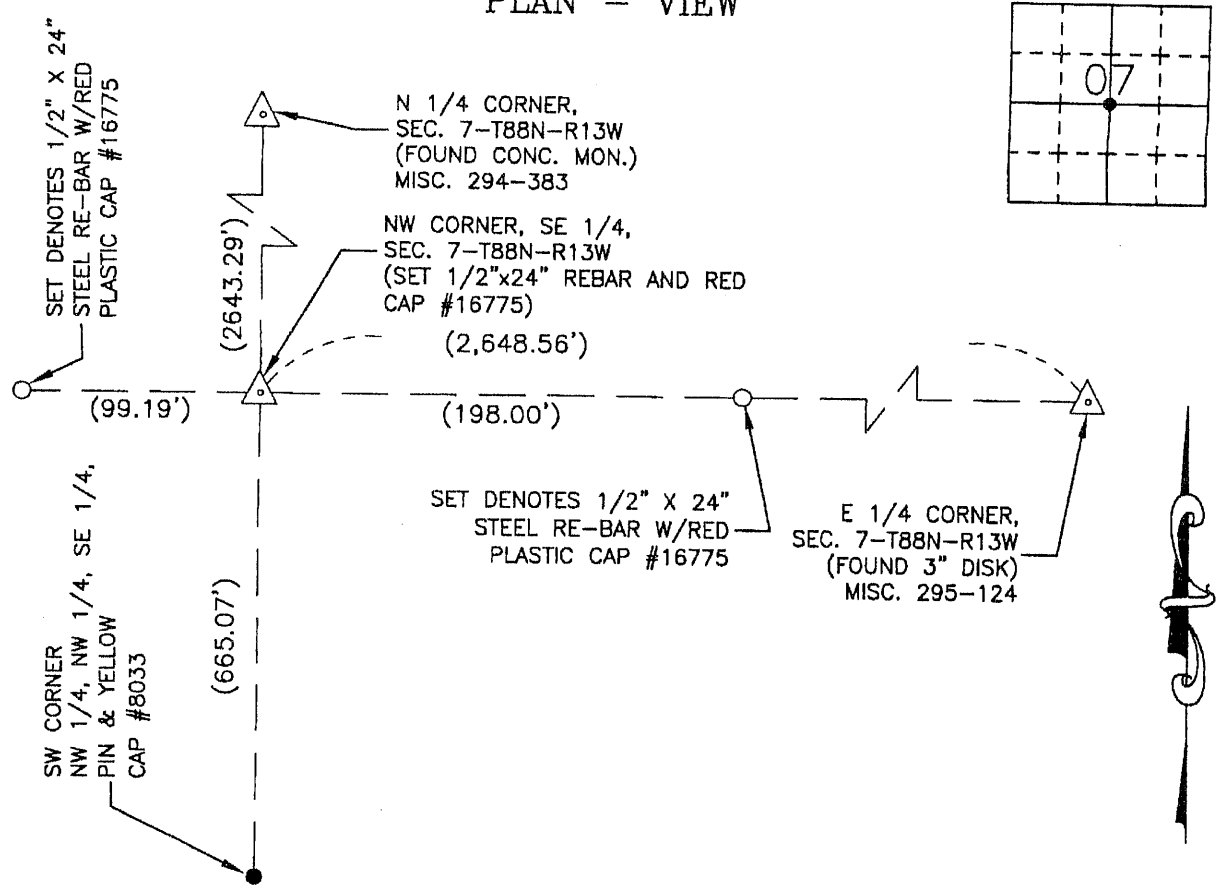
UNITED STATES PUBLIC LAND SURVEY CORNER CERTIFICATE

Land Survey Monuments situated in Section 07, Township 88 North, Range 13 West, of the Fifth Principal Meridian, Black Hawk County, Iowa.
Previously recorded in DOCUMENT No. 2003-39187 in County Recorder's Office.
(book, page, document number, etc.)

Monument Description and Remarks

Pin and yellow cap #8033 missing from above corner certificate. Set 1/2" x 24" rebar and red cap #16775 as per ties from above corner certificate. This certificate is being filed because there is a change in monumentation.

PLAN - VIEW



I hereby certify that this land surveying document was prepared and the related survey work was performed by me or under my direct personal supervision and that I am a duly Licensed Land Surveyor under the laws of the State of Iowa.

Signature: David L. Scheil
David L. Scheil, L.S.
Date: July 27, 2010 Lic. No. 16775

Pages or Sheets Covered by this Seal: THIS SHEET ONLY.

My license renewal date is December 31, 2010

SEAL

List Corners to be Indexed

Corners	Section	Twp	Range
CENTER,	07	88 N	13 W

