

SC
Misc
INDEX
MARGIN
PROOF
CORRECTION

County Assessor

BLACK HAWK COUNTY IOWA:SS 12469
Filed for recorded Dec 22, 19 97 at
4:00 P.M. and recorded in Book 328
of Misc Page 561
Recorder
FEE 1-5.00/
WAYNE CLAASSEN ENGINEERING AND SURVEYING, INC.

WAYNE CLAASSEN ENGINEERING AND SURVEYING, INC.
P.O. BOX 898 WATERLOO, IOWA 50704-0898

PHONE: (VOICE) 319-235-6294
(FAX) 319-235-0028

UNITED STATES PUBLIC LAND SURVEY CORNER CERTIFICATE

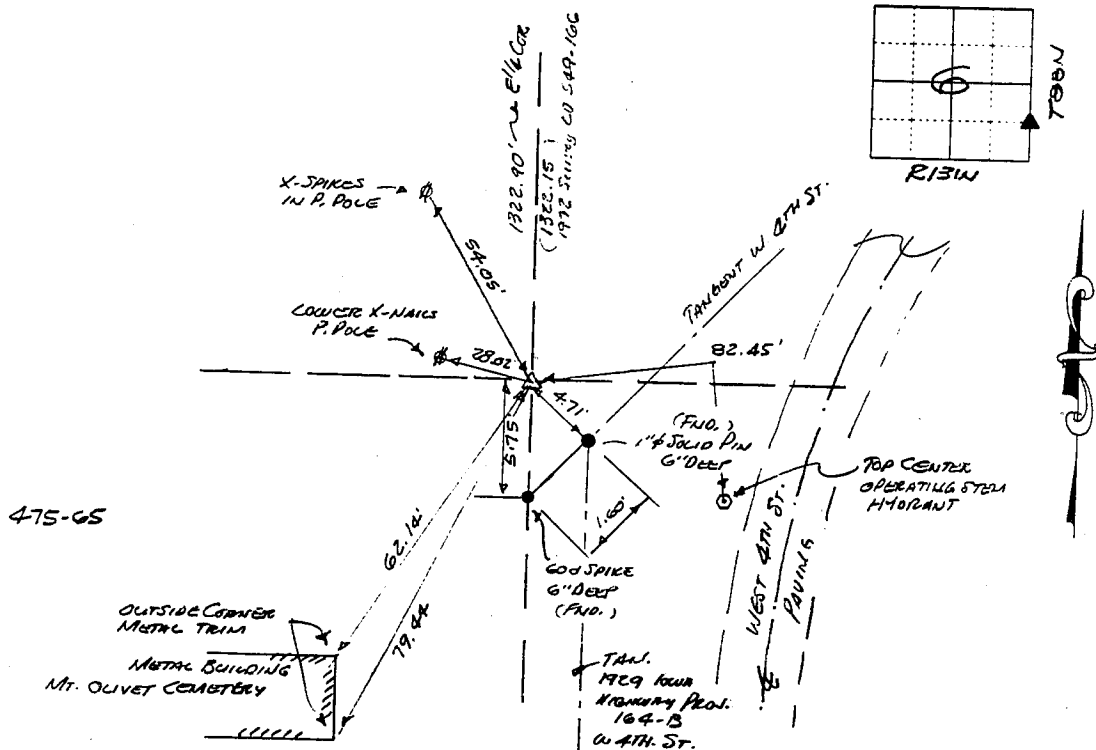
Land Survey Monuments situated in Section 6, Township 88N, Range R13W, of the Fifth Principal Meridian, BLACK HAWK County, Iowa.
Previously recorded in N/A in County Recorder's Office.
(book, page, document number, etc.)

(Show reason for preparing this certificate, the evidence and detailed procedures used in establishing the corner positions and monumentation found or placed.)

Monument Description and Remarks FOUND 5/8" Ø REBAR FLUSH WITH SURFACE
(SEE CD 549-KG) STATE OF IOWA PATENT TO YOUNG 1986 - INCLUDES PLAT 134
REVISION 1975 OF EXCESS R/W DIRECTLY SHOWING THIS CORNER.

PLAN - VIEW

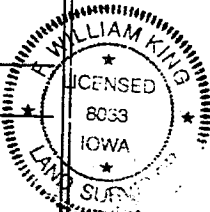
(Show a minimum of three reference ties to durable physical objects, relevant monuments and physical conditions that will enable recovery of the corner.)



I hereby certify that the survey work was completed and this certificate was prepared by me or under my direct personal supervision and that I am a duly licensed land surveyor under the laws of the state of Iowa.

Signature: F. William King
(Name typed or printed: F. William King)
Date: Dec. 11, 1997 Lic. No. 8033

SEAL



List Corners to be Indexed

Corners	Section	Twp	Range
NE 1/4	5E 1/4 SE 1/4	6	88N 13W

BOOK 328 PAGE 561